

PLAN PARK COUNTY



PROJECT UPDATE

Board of County Commissioners
September 2022

STATUS UPDATE



OPPORTUNITIES FOR INPUT

36

ONLINE & IN-PERSON
MEETINGS /SURVEYS



- Stakeholder Focus Groups (20)
- Youth Focus Groups (4)
- Online surveys (2)
- Public meetings (4)
- LUPAC meetings (3)
- Technical Working Group Meetings (2) + Suitability Criteria survey (1)

PARTICIPATION BY THE NUMBERS

850

SURVEY RESPONSES



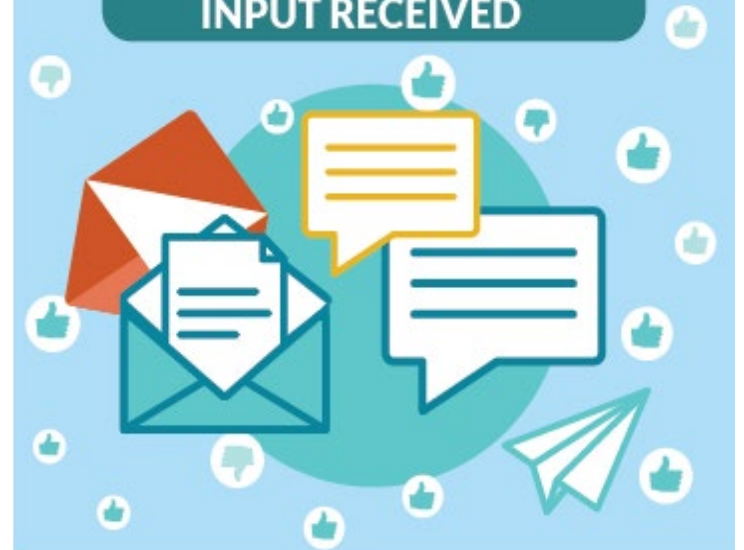
338+

MEETING/FOCUS
GROUP ATTENDEES



222+

PAGES OF COMMENTS/
INPUT RECEIVED



PUBLIC MEETINGS (IN-PERSON)

OCTOBER INPUT OPPORTUNITIES

NORTH FORK

Wapiti School, 5:30-7:00pm

12:00-1:30pm, **MEETEETSE**

Meeteetse Visitor Center (Ferret Den)

5:30-7:00pm, **SOUTHFORK**

Southfork Fire Hall

Tue. 4 Oct.

Thu. 6 Oct.

Mon. 3 Oct.

Wed. 5 Oct.

CODY, Cody Auditorium, 5:30-7:00pm

12:00-1:30pm, **CLARK**

Clark Pioneer Recreation Center

5:30-7:00pm, **POWELL**, Park County

Fairgrounds, Heart Mountain Hall

(CONTINUED)

OCTOBER INPUT OPPORTUNITIES

- **VIRTUAL PUBLIC MEETING**
Wednesday, October 12, 5:30-7:00pm, ZOOM
- **ONLINE SURVEY #3 – KEY POLICY CHOICES**
Launches Friday, October 7 (remains open through Monday, October 3)
- **LUPAC MEETING #3**
Tuesday, October 4, 2:00-4:00pm

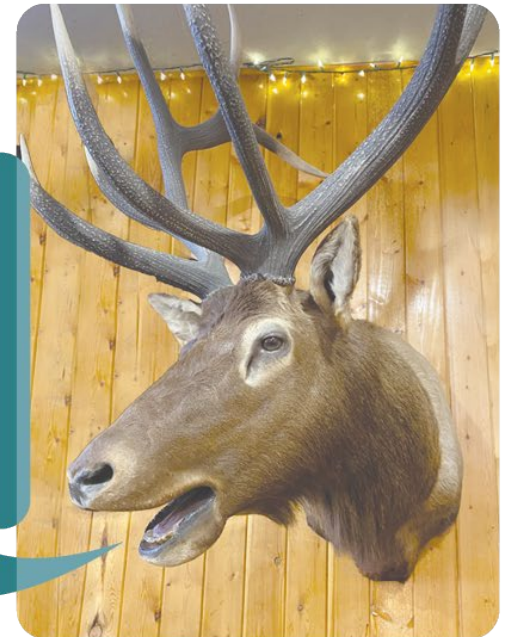


www.PlanParkCounty.us

WHAT WE PLAN TO COVER

- Countywide Trends and Forecast
- Factors Influencing Growth
- Key Policy Choices

**Park County could
add up to 3,778 new
residents by 2040...**

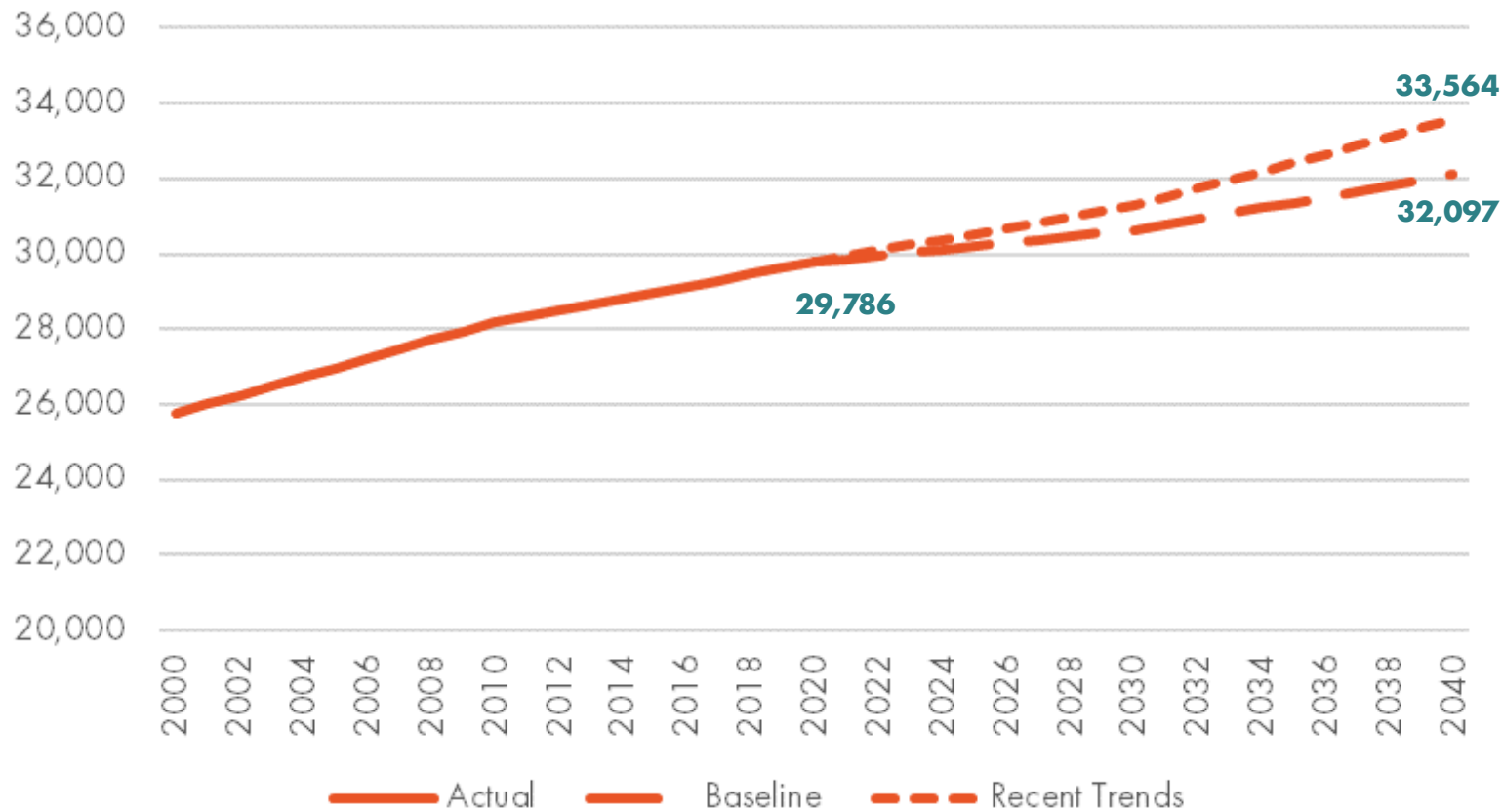




COUNTYWIDE TRENDS AND FORECAST

POPULATION

POPULATION CHANGE (2000-2040)



Quick Facts

29,786

Population (2020)

32,097 - 33,564

Population (2040)

0.64%/year

Growth Rate (2000-2020)

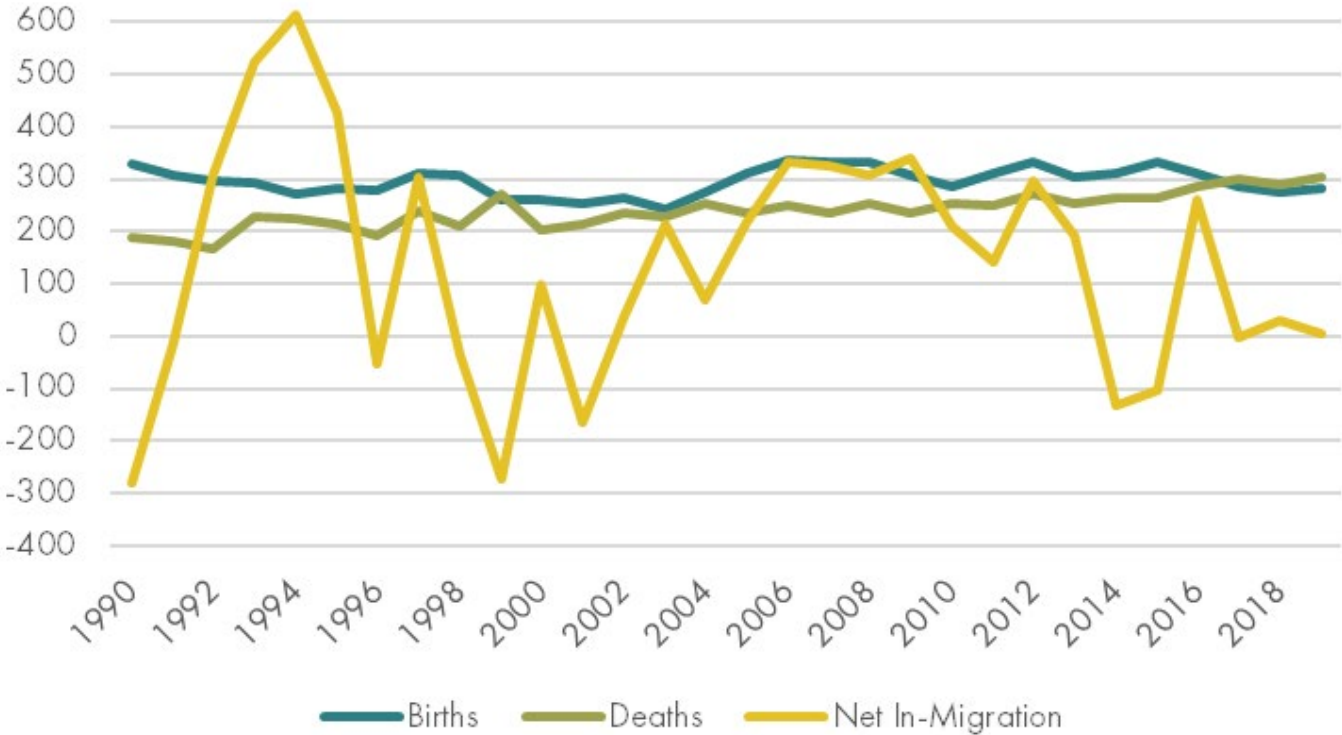
0.37% - 0.60%/year

Growth Rate (2020-2040)

Source: U.S. Census, State of Wyoming Demographer, EPS

DEMOGRAPHIC TRENDS

Park County's population is aging as residents 65+ years old accounted for most the growth over past decades



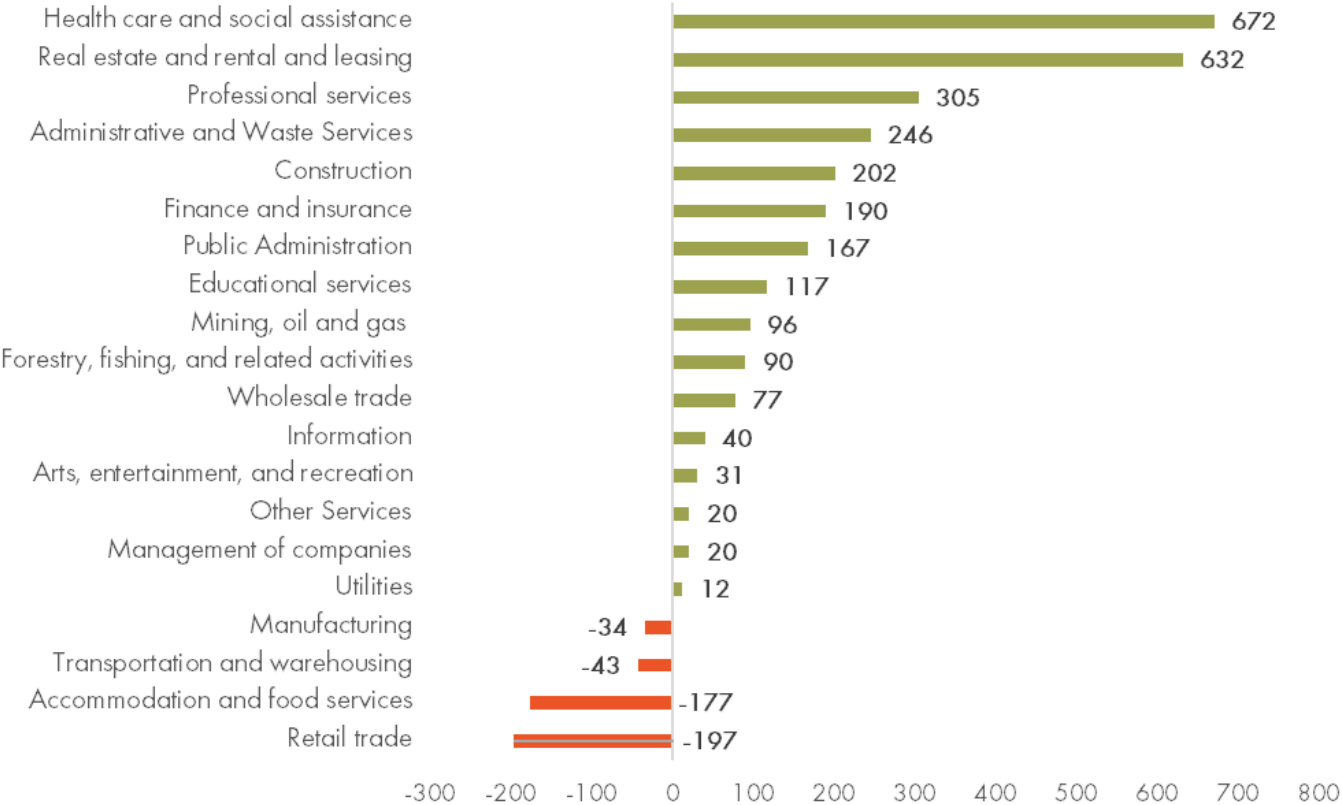
Quick Facts

- 2.99%/year**
65+ Growth Rate (2000-2020)
- 0.05%/year**
<15 Growth Rate (2000-2020)
- 60%**
Working-age Pop. (2020)
- 56%**
Working-age Pop. (2040)

Source: WY Department of Health, U.S. Census Bureau, EPS

ECONOMY

The Park County economy continues to grow anchored by agriculture, services, and tourism



Industry Trends

Largest Industries

- Public Administration
- Retail, Lodging & Food Service
- Healthcare & Social Assist.
- Construction
- Farming/Agriculture

Growing Industries

- Health Care
- Real Estate
- Profession/Admin Services
- Construction

Source: U.S. Bureau of Economic Analysis, EPS

EMPLOYMENT

- Employment growth has outpaced population growth over past two decades
- Economic indicators, such as unemployment rate, show a strong/growing economic base
- More workers are commuting into Park County for jobs

To sustain recent rate of economic activity the regional labor force needs to grow

Quick Facts

0.72%/year

Job Growth (2001-2020)

4.1%

Unemployment (2021)

9.6% to 20.9%

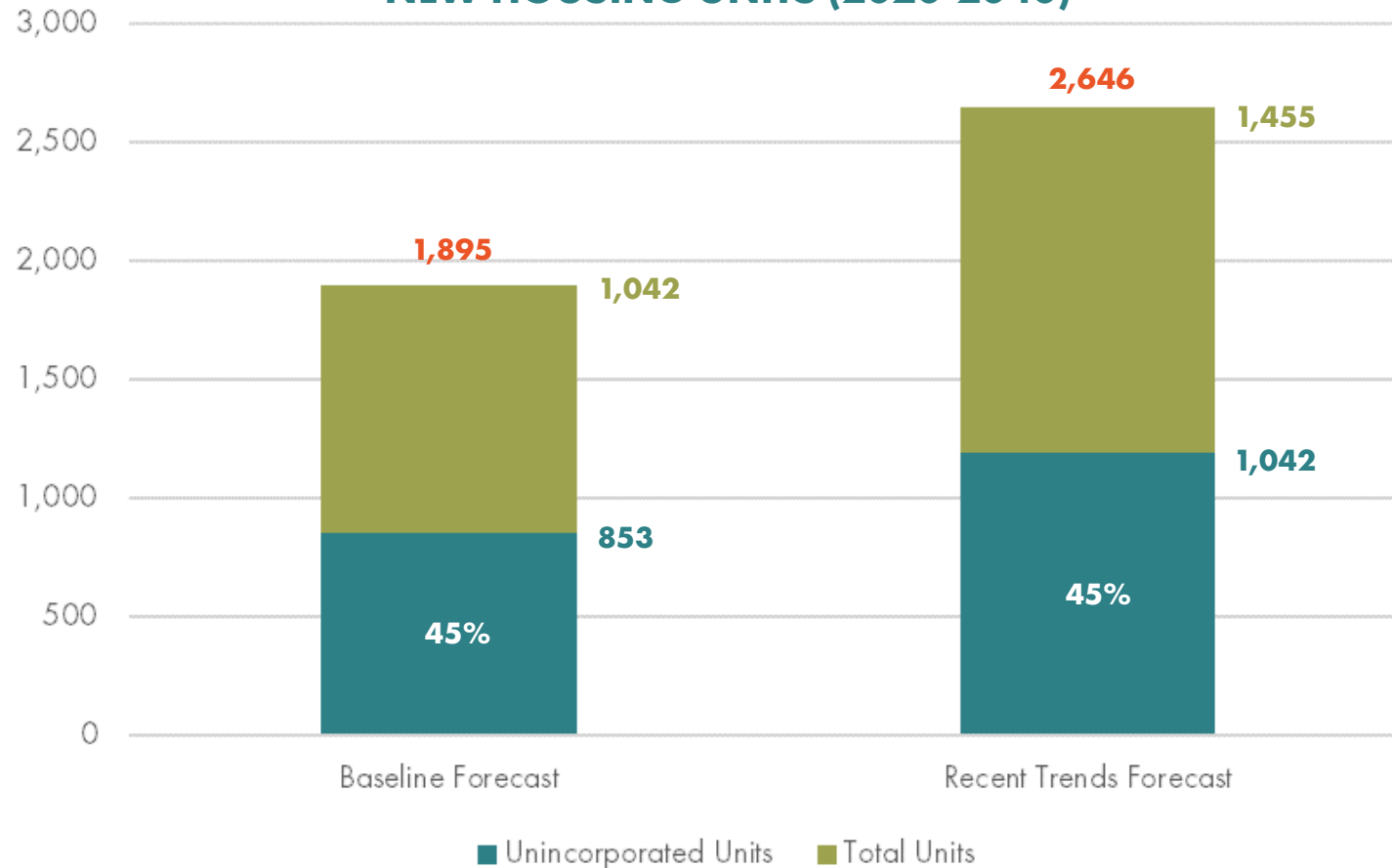
In-Commuters (2002-2019)

1,404 – 2,278

Jobs (2020-2040)

HOUSING

NEW HOUSING UNITS (2020-2040)



Quick Facts

12,575

Households (2020)

2.26

Avg. Household Size (2020)

73.2%

Owner Occupancy Rate (2020)

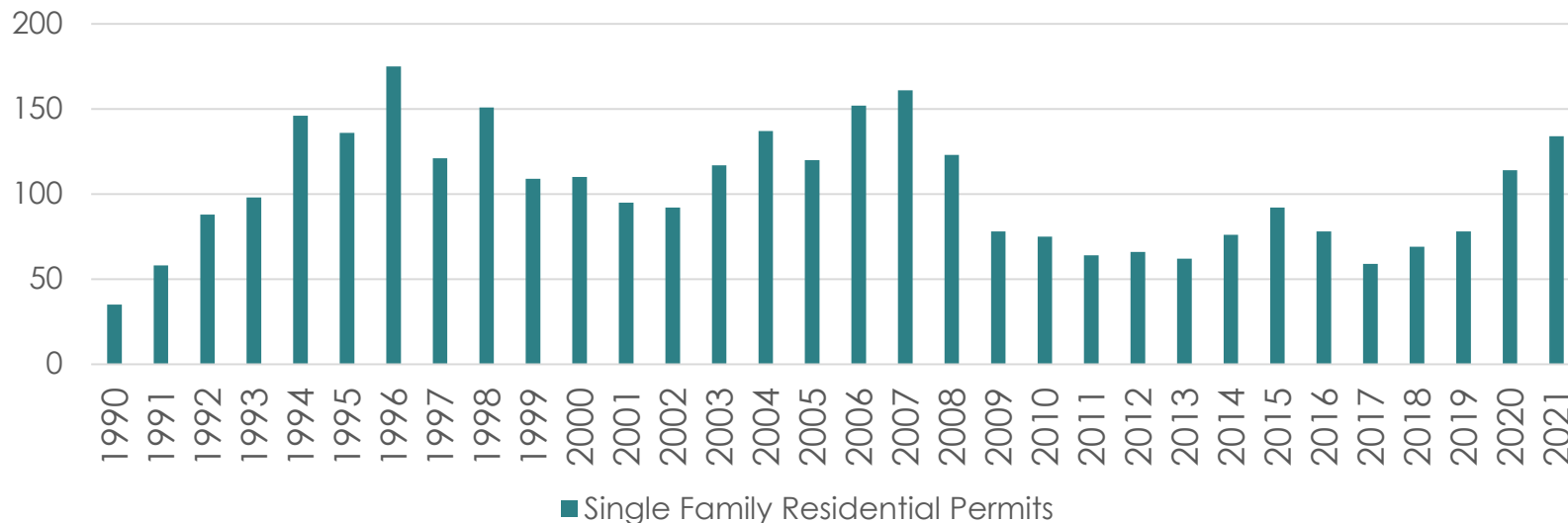
13.7%

Housing Vacancy Rate (2020)

Source: U.S. Census Bureau, Park County, EPS

GROWTH & DEVELOPMENT

Rate of new home development has increased significantly in past couple years and appears to be driven by seasonal homeowners, retirees, and short-term rentals



Quick Facts

102 permits/year
Building Permits (2000-2020)

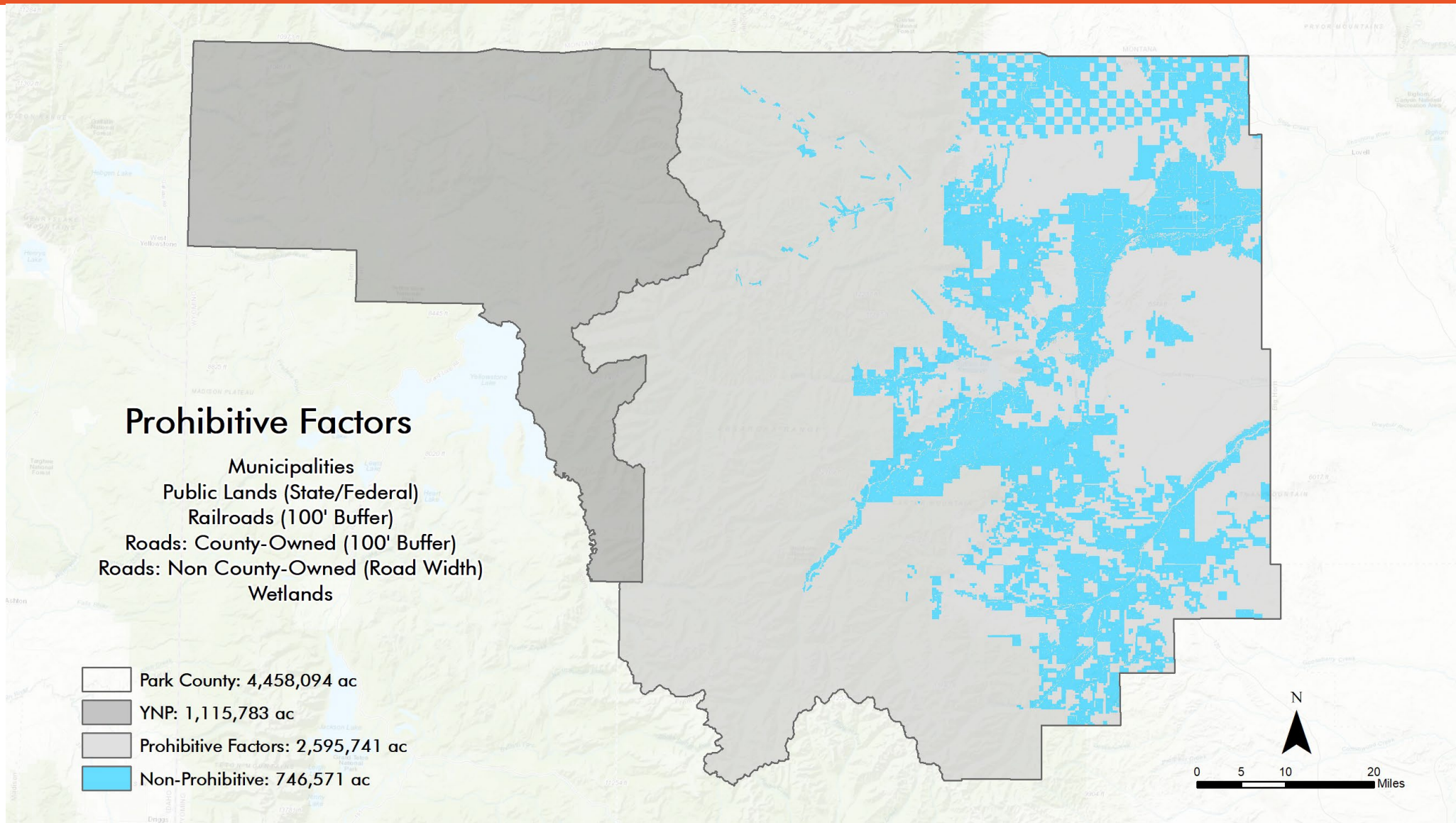
128 requests/year
New Addresses (2017-2021)

68 new taps/year
NRWD Active Taps (2017-2021)

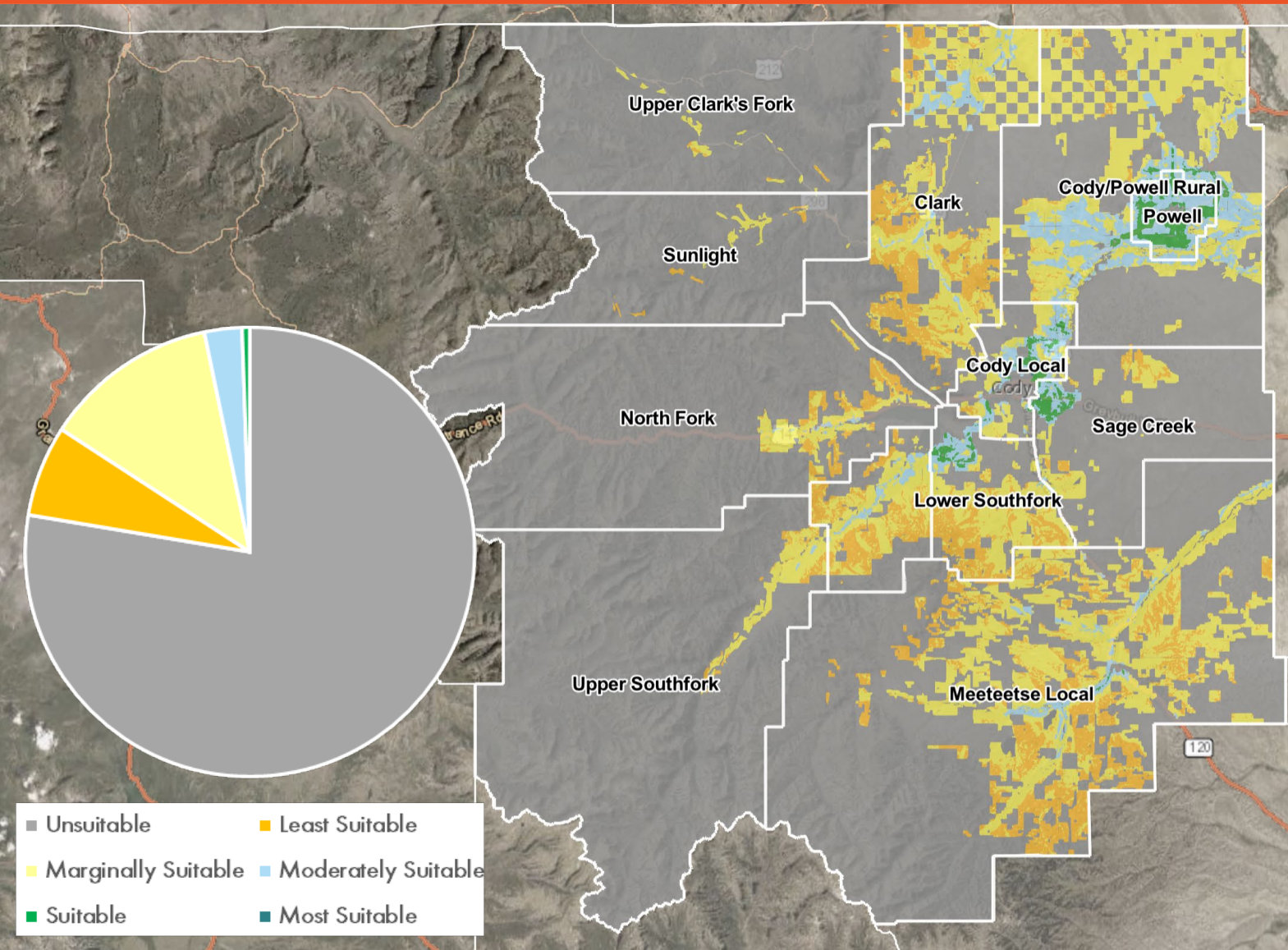


FACTORS INFLUENCING GROWTH

PROHIBITIVE FACTORS



FEASIBILITY FACTORS LAND SUITABILITY ANALYSIS



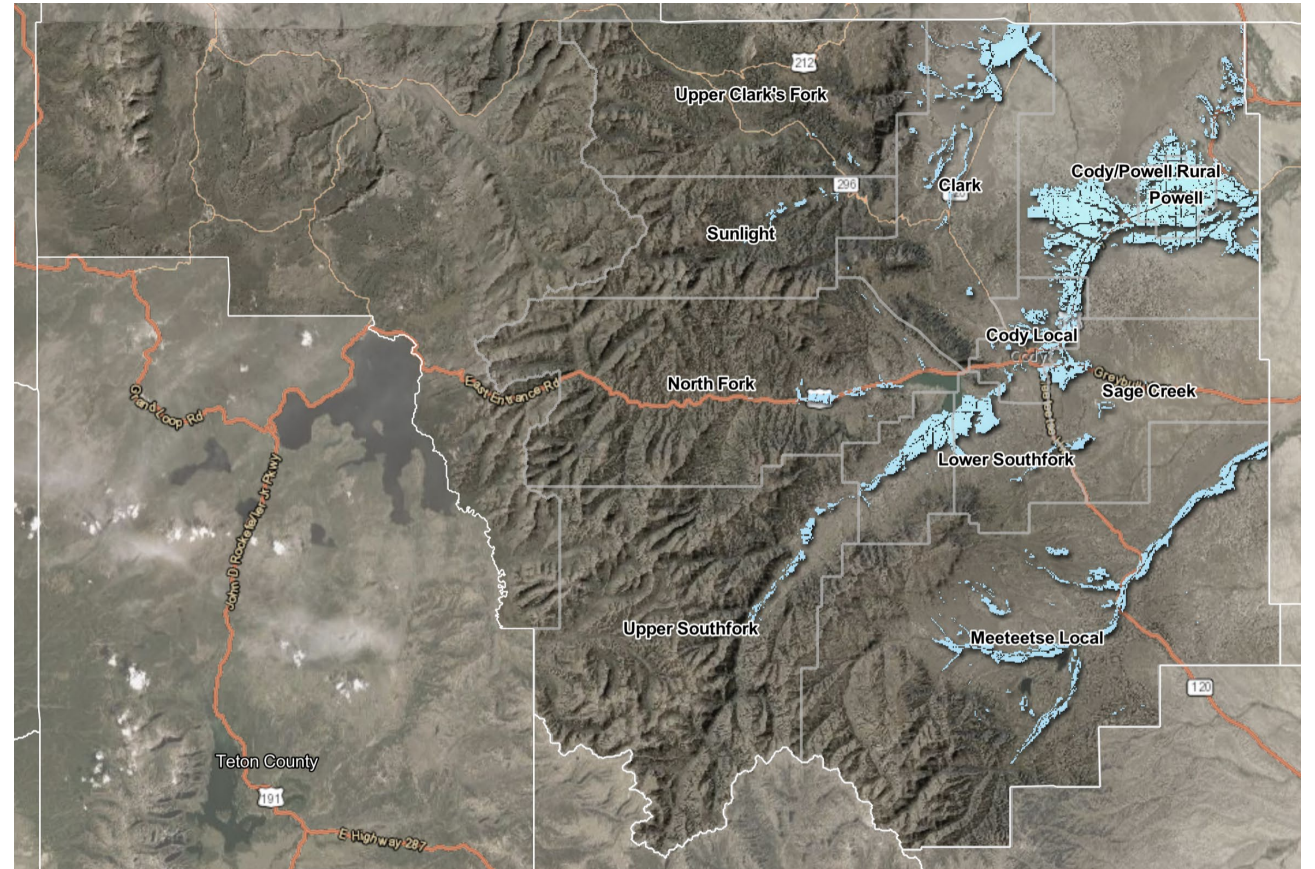
ANALYSIS CRITERIA

- Distance to infrastructure (municipal and rural)
- Access to services (distance to municipality)
- Distance to roads (paved, gravel, unimproved)
- Slope
- Soil characteristics

Note: Additional suitability factors would be evaluated at a site level at the time of development (e.g., flood hazard, conservation easements, wetlands)

OTHER FACTORS ADDRESSED

- Domestic water
- Current zoning
- Market demand (Recent Trends/Growth Forecasts)
- Conflict areas
 - Irrigated agricultural land
 - Crucial wildlife habitat



GROWTH CONTEXTS

- Suitability
 - Land Suitability Analysis results
 - Historic growth trends (demand)
- Conflict
 - Irrigated agriculture land
 - Crucial wildlife habitat





KEY POLICY CHOICES

INFORMED BY INPUT ON SHARED VALUES

Our Rural Landscapes

- Growth Management
- Private Land Use
- Infrastructure & Public Services

73%



Our Resources and Heritage

- Economic Development
- Water
- Environment & Natural Resources
- Agriculture
- Historic Pres.

67%



Our Culture and Sense of Community

- Housing
- Culture
- Government

74%



WHERE AND HOW DO WE WANT TO GROW?

- Growth Management
- Conservation (Irrigated agricultural lands, crucial wildlife habitat)
- Housing (lot sizes, STRs, partnerships, UBC)
- Economy

For Each Topic Grouping

- Where are we today?
 - Policies/regulations
 - Park County's role
- What types of strategies could we potentially pursue to achieve our goals?
- Where on the spectrum do we want to be as we look to the future?





NEXT STEPS

NEXT STEPS

- Focus Group: EPS Growth Projections/Demand Analysis
- Refine materials for October meetings based on LUPAC input
- TWG meeting
- Ongoing efforts to get the word out about October input opportunities

Park County could add up to 3,778 new residents by 2040...



WHERE AND HOW SHOULD WE GROW?

Join us for a second round of public meetings to share your thoughts! All meetings will provide an opportunity for participants to provide input on specific planning areas. Please plan to attend the day and time that works best for you!



In-Person:

- **Monday, October 3** 5:30-7:00pm, **North Fork:** Wapiti School
- **Tuesday, October 4** 5:30-7:00pm, **Cody:** Cody Auditorium
- **Wednesday, October 5**
 - 12:00-1:30pm, **Meeteetse:** Meeteetse Visitor Center (Ferret Den)
 - 5:30-7:00pm, **Southfork:** Southfork Fire Hall
- **Thursday, October 6**
 - 12:00-1:30pm, **Clark:** Clark Pioneer Recreation Center
 - 5:30-7:00pm, **Powell:** Park County Fairgrounds, Heart Mountain Hall

Virtual:

- **Wednesday, October 12** 5:30-7:00pm, **ZOOM**
<https://us02web.zoom.us/j/82053131845>

FOR MORE INFORMATION

www.planparkcounty.us



WE WANT TO HEAR FROM YOU!



- Submit comments or questions
- Sign-up for project updates
- Contact your LUPAC member

www.PlanParkCounty.us