

POWELL AREA COMPREHENSIVE POLICY STATEMENT

FEBRUARY 20, 1996

CERTIFICATION

The Park County Planning and Zoning Commission, hereby certifies the Powell Area Comprehensive Policy Statement to the Board of Park County Commissioners, City of Cody, City of Powell, Town of Meeteetse, Town of Frannie, U.S. Forest Service, Bureau of Land Management, Bureau of Reclamation, U.S. Fish and Wildlife Service, and National Park Service.

The Powell Area Comprehensive Policy Statement shall be used as guidance in the development of other elements of the Comprehensive Plan for Park County and shall not be used to review land use classifications, reclassifications, planned unit developments, and subdivisions unless the Powell Area Comprehensive Policy Statement is endorsed by the Board of County Commissioners pursuant to the "Park County Development Standards and Regulations".


Colin Simpson, Vice-Chairman
Park County Planning and Zoning Commission

Date: February 20, 1996

INTRODUCTION

Planning is essential to the efficient operations of both government and private enterprises. It is especially important in Park County to manage change through planning. Recognizing the changes and choices confronting Park County, the Park County Planning and Zoning Commission has adopted these principles to guide planning within the Powell Area.

The Comprehensive Policy Statement (CPS) is advisory in nature. When used in evaluating specific actions or proposals, the CPS is intended to provide guidance. The CPS does not exclude consideration of actions or proposals which were not anticipated by the CPS.

The Local Area CPS is intended to do the following:

- (1) Provide direction for elected and appointed officials as to the community's desires.
- (2) Enable the county and others to anticipate the community's desires for public services and facilities, type and intensity of development, and public participation in the decision-making process.
- (3) Make the best use of the community's natural resources.
- (4) Encourage a well-balanced, prosperous economy.
- (5) Enhance the community's unique character, customs, culture, traditions, and quality of life, and protect the community's natural environment pursuant to their stated goals and objectives.
- (6) Act as a guide to decision makers in reviewing development proposals and actions concerning the community.
- (7) Provide coordination of the use of resources in areas of diverse ownership.

This CPS applies to the unincorporated areas of Park County within the Powell Planning Area, and includes a number of components which address particular issues such as land use, the economy, public facilities, natural resources, and the local customs and culture.

At times, the CPS may need to be amended as the Powell Area's desires or factors affecting the Powell Planning Area change. Park County anticipates using Local Citizen Advisory Committees to recommend changes to the CPS as needs are identified by citizens of the Powell Area or elected and appointed officials.

AUTHORITY

Title 18, Chapter 5 and Title 9, Chapter 3 of the Wyoming State Statute provide the authority for and detail the scope and purpose of plans for counties or portions of counties.

THE POWELL PLANNING AREA

Starting at the intersection of County Lane 5 and County Road 10, thence S. to Lane 6, thence W. to Road 12, thence S. to the N. line of T.55N., thence W. to the E. line of R.100W., thence S. to Lane 11 1/2, thence E. to Road 11, thence S. to the S. line of T.55N., thence E. to the E. line of R.99W., thence N. to Lane 11, thence E. to Road 6, thence N. to Lane 10, thence E. to Road 5, thence N. to Lane 7, thence W. to Road 6, thence N. to Lane 6, thence W. to Road 8, thence N. to Lane 5, thence W. to the point of beginning.

ECONOMICS

Powell Area Goals and Objectives

GOAL #1 PLEC:

Achieve and expand a sustainable diverse economy.

OBJECTIVE #1 PLEC:

Support the retention and expansion of existing business.

OBJECTIVE #2 PLEC:

Support the retention and expansion of the agricultural sector.

OBJECTIVE #3 PLEC:

Increase the availability of "family-wage" jobs.

OBJECTIVE #4 PLEC:

Increase the diversification of businesses.

OBJECTIVE #5 PLEC:

Maintain and expand oil, gas, and other extractive industries.

OBJECTIVE #6 PLEC:

Retain the multiple use of public lands.

OBJECTIVE #7 PLEC:

Maintain & retain a high-quality, well-educated work force.

OBJECTIVE #8 PLEC:

Increase value-added production.

OBJECTIVE #9 PLEC:

Maintain public services at adequate levels to accommodate new development.

Recommended Actions or Policies to Help Achieve the Powell Area's Goals and Objectives for Economics

POLICY #1 PLEC:

Attract non-polluting industries, labor intensive manufacturing, and small businesses.

POLICY #2 PLEC:

Create an environment attractive to new business and industry.

POLICY #3 PLEC:

Expand economic development that responds to the needs of the available work force.

POLICY #4 PLEC:

Develop the necessary infrastructure and business incentives to attract new business and industry.

POLICY #5 PLEC:

Support the multiple use of public lands.

POLICY #6 PLEC:

Develop land use regulations that support commercial and industrial opportunities and maintain the rural character of each community.

ENVIRONMENT

Powell Area Goals and Objectives

GOAL #1 PLEN:

Maintain a healthy environment.

OBJECTIVE #1 PLEN:

Preserve the small town, friendly rural lifestyle.

Recommended Actions or Policies to Help Achieve the Powell Area's Goals and Objectives for Environment

POLICY #1 PLEN:

Encourage development to the least productive lands.

POLICY #2 PLEN:

Develop and enforce land use regulations that ensure a balance between responsible human use and maintenance of environmental quality.

NATURAL RESOURCES

Powell Area Goals and Objectives

GOAL #1 PLNR:

Encourage the orderly development use, and conservation of Park County's renewable resources and for the orderly development of non-renewable natural resources.

OBJECTIVE #1 PLNR:

Maintain the use of the natural resources of Park County for the benefit of its citizens.

OBJECTIVE #2 PLNR:

Increase citizen involvement in decisions concerning resources extraction.

PUBLIC LAND USE

Powell Area Goals and Objectives

GOAL #1 PLPU:

Develop a harmonious and productive relationship among the people, city and county governments, and state and federal land and resource management agencies administering public lands within Park County.

OBJECTIVE #1 PLPU:

Increase local officials level of coordination with state and federal agencies in the management and use of public lands to help meet the needs of county residents – it is a desire that all governments in Park County communicate and provide a "free" exchange of information on common issues and problems.

OBJECTIVE #2 PLPU:

Increase opportunities for local public involvement in public lands issues and improve the availability of information concerning the use of public lands.

Recommended Actions or Policies to Help Achieve the Powell Area's Goals and Objectives for Public Land Use

POLICY #1 PLPU:

The Board of County Commissioners will make a good faith effort to raise all issues it deems important in as specific a manner as possible. The county shall describe applicable state and local laws, plans, and policies which may apply to the proposal or have an effect on the decision.

POLICY #2 PLPU:

Develop regular and special meetings between local government officials and public lands managers.

POLICY #3 PLPU:

The Board of County Commissioners shall study the issues concerning the management of public lands and respond to issues as a board by forwarding majority and minority reports to the public lands managers – it is a desire that we ensure that no single board member act on behalf of the board by proposing policies to agencies on issues of such importance to the community.

POLICY #4 PLPU:

Encourage the public land managers to include local officials in field work and field trips to increase levels of understanding.

POLICY #5 PLPU:

Develop and maintain an economic model for Park County to assist decision makers in assessing the effects of various public land management decisions on the local economy.

POLICY #6 PLPU:

The Board of County Commissioners decisions concerning the management of public lands should reflect consideration of non-commodity values.

POLICY #7 PLPU:

The Board of County Commissioners shall work to improve the availability of information concerning public lands decisions, particularly decisions that involve the exchange, acquisition, or sale of public lands by including public lands discussions and issues on their weekly agenda or by utilizing other appropriate methods of notifying the public.

POLICY #8 PLPU:

The Board of County Commissioners shall make the effort to review and provide comments concerning the effects any proposed public land exchange, or acquisition or sale of public land will have on Park County.

POLICY #9 PLPU:

Establish a technical advisory committee to review public lands management proposals and provide information to the Board of County Commissioners concerning the effects on Park County. The committee shall ensure that all elements of a proposal are considered including NEPA and other federal and state legislation. The committee should not act as an advocacy group for any particular position, but as a technical information gathering committee.

PRIVATE LAND USE

Powell Area Goals and Objectives

GOAL #1 PLPV:

Balance the rights of the landowner with the needs of the community.

OBJECTIVE #1 PLPV:

Coordinate development opportunities between Park County, City of Powell, and the landowner where jurisdictions overlap.

OBJECTIVE #2 PLPV:

Encourage planned development on least productive land to maintain agricultural resources.

Recommended Actions or Policies to Help Achieve the Powell Area's Goals and Objectives for Private Land Use

POLICY #1 PLPV:

Investigate possible incentives for landowners to develop the least productive land.

POLICY #2 PLPV:

Develop a planning document for orderly growth compatible with the county plan.

WATER

Powell Area Goals and Objectives

GOAL #1 PLWA:

Promote the use and development of water to meet the needs of domestic, agricultural, industrial, and recreational users and to meet the demands of wildlife.

OBJECTIVE #1 PLWA:

Maintain a safe drinking water supply.

OBJECTIVE #2 PLWA:

Improve land management practices.

OBJECTIVE #3 PLWA:

Protect water rights from federal acquisition.

OBJECTIVE #4 PLWA:

Retain or improve water availability for all uses.

Recommended Actions or Policies to Help Achieve the Powell Area's Goals and Objectives for Private Land Use

POLICY #1 PLWA:

Make information available to citizens regarding the use of chemicals.

POLICY #2 PLWA:

Make information available to the public about water use issues and water conservation practices.

POLICY #3 PLWA:

Encourage the study of minimum stream flows by the irrigation districts.

POLICY #4 PLWA:

Require careful study of the impacts of dams.

WASTE WATER

Powell Area Goals and Objectives

GOAL #1 PLWW:

Ensure sewage disposal systems meet state specifications.

OBJECTIVE #1 PLWW:

Reduce pollution from sewage disposal systems.

Recommended Actions or Policies to Help Achieve the Powell Area's Goals and Objectives for Private Land Use

POLICY #1 PLWW:

Continue to require subdivision plans to include all information necessary to ensure that sewage disposal systems will function properly and not contaminate ground or surface water.

POLICY #2 PLWW:

Encourage research into alternative sewer and septic systems.

GOVERNMENT

Powell Area Goals and Objectives

GOAL #1 PLGV:

Create an efficient, accessible county government that is sensitive to the changing demands of Park County citizens.

OBJECTIVE #1 PLGV:

Encourage public participation in government.

OBJECTIVE #2 PLGV:

Encourage the cooperation of various levels of government to make them more responsive to the changing demands of Park County citizens.

Recommended Actions or Policies to Help Achieve the Powell Area's Goals and Objectives for Government

POLICY #1 PLGV:

Improve opportunities for local citizens to participate with government entities in the decision-making process.

POLICY #2 PLGV:

Continue to support open public meetings and encourage public input during hearings.

POLICY #3 PLGV:

Establish an advisory board.

POPULATION

Powell Area Goals and Objectives

GOAL #1 PLPO:

Population growth consistent with our economic base, the availability of services, and the community's rural character.

OBJECTIVE #1 PLPO:

Concentrate population growth in or near existing urban areas.

OBJECTIVE #2 PLPO:

Encourage family planning education.

OBJECTIVE #3 PLPO:

Encourage age diversity within the population.

Recommended Actions or Policies to Help Achieve the Powell Area's Goals and Objectives for Population

POLICY #1 PLPO:

Develop a planning document that reflects the policy statements in housing, education, population, recreation, and health and human services.

POLICY #2 PLPO:

Make information about family planning services & health and human services in the local community available.

HOUSING

Powell Area Goals and Objectives

GOAL #1 PLHG:

Meet the Goals of the Powell Housing Task Force or other local organizations working to improve housing availability.

OBJECTIVE #1 PLHG:

Achieve the objectives of the Powell Housing Task Force or other local groups working to improve housing availability.

Recommended Actions or Policies to Help Achieve the Powell Area's Goals and Objectives for Housing

POLICY #1 PLHG:

Promote the actions of the Powell Housing Task Force and other organized local groups working to improve housing availability.

COMMUNICATIONS

Powell Area Goals and Objectives

GOAL #1 PLCM:

Provide access to state-of-the-art national and international networks.

OBJECTIVE #1 PLCM:

Improve access and availability to state-of-the-art information and communication networks.

Recommended Actions or Policies to Help Achieve the Powell Area's Goals and Objectives for Communications

POLICY #1 PLCM:

Support and develop state-of-the-art information and communication networks.

POLICY #2 PLCM:

Communicate Park County's communication needs to the Public Service Commission and pressure the Commission to ensure better service in Park County.

POLICY #3 PLCM:

Promote competition among providers in the establishment and maintenance of information and communication networks.

POLICY #4 PLCM:

Encourage the use of telecommunication tools to allow the public to participate in public hearings.

POLICY #5 PLCM:

Establish a countywide task force to review and evaluate technology and communication needs.

POLICY #6 PLCM:

Investigate the feasibility of installing fiber optics in a combined public and private partnership.

POLICY #7 PLCM:

Encourage developers to provide state-of-the-art communication to all subdivisions.

POLICY #8 PLCM:

Explore the possibility of working with telecommunication companies in developing and improving communications networks.

POLICY #9 PLCM:

Work with NWC to develop and expand countywide communications networks.

HISTORIC PRESERVATION

Powell Area Goals and Objectives

GOAL #1 PLHI:

While not infringing upon private property rights, protect the historic resources and archaeological sites of significance to the Powell area's heritage and culture.

OBJECTIVE #1 PLHI:

Preserve oral, written, and pictorial history.

OBJECTIVE #2 PLHI:

Heighten public awareness and understanding of the value of historic resources.

OBJECTIVE #3 PLHI:

Improve the reliability and broaden the sources of funding for historic conservation and preservation.

Recommended Actions or Policies to Help Achieve the Powell Area's Goals and Objectives for Historic Preservation

POLICY #1 PLHI:

Support existing federal, state, and county historical preservation programs.

POLICY #2 PLHI:

Encourage the development of historical organizations throughout the county.

POLICY #3 PLHI:

Work to stimulate funding from private groups and help from volunteers to preserve and protect historic and archeological resources.

POLICY #4 PLHI:

Continue to support paid staffs at Park County Historical Archives and county museums.

POLICY #5 PLHI:

Encourage the development of educational programs about historic resources and the values of those resources.

POLICY #6 PLHI:

Encourage the identification of historic sites worthy of preservation.

RECOMMENDED ACTIONS AND POLICIES FOR HISTORIC PRESERVATION (cont.)

POLICY #7 PLHI:

Seek out sources of local history from individuals and community organizations before the history is lost.

POLICY #8 PLHI:

Follow existing regulatory policies for protecting prehistoric, paleontological, and historical sites including restricted access when necessary, or requiring private property owners to consult with appropriate authorities before disturbing historical sites.

POLICY #9 PLHI:

Create historical districts through land use regulations that would reward private property owners for preserving historic sites and buildings.

POLICY #10 PLHI:

Investigate the use of non-monetary incentives in the land use regulations that would reward private property owners for preserving historic sites and buildings.

RECREATION Powell Area Goals and Objectives

GOAL #1 PLRE:

Encourage a wide range of recreational opportunities to meet the needs of Powell residents.

OBJECTIVE #1 PLRE:

Increase opportunities for private enterprise to develop recreational facilities on federal and state lands.

OBJECTIVE #2 PLRE:

Balance recreational needs with respect for the environment.

OBJECTIVE #3 PLRE:

Reduce overuse and overcrowding of recreational areas.

OBJECTIVE #4 PLRE:

Be aware of overuse and overcrowding of recreational areas.

Recommended Actions or Policies to Help Achieve the Powell Area's Goals and Objectives for Recreation

POLICY #1 PLRE:

Support the development of new recreational areas consistent with population growth.

POLICY #2 PLRE:

Complete a city assessment of existing recreational facilities.

POLICY #3 PLRE:

Support funding for the Powell Recreation Board.

POLICY #4 PLRE:

Encourage the implementation of recreational fees to provide needed revenue.

POLICY #5 PLRE:

Encourage private clubs/organizations with various interests to help fund or maintain recreational sites.

ARTS AND HUMANITIES Powell Area Goals and Objectives

GOAL #1 PLAH:

Encourage cultural opportunities through public/private enterprises.

OBJECTIVE #1 PLAH:

Strengthen ties between existing arts programs, schools and Northwest College to broaden arts and humanities opportunities.

OBJECTIVE #2 PLAH:

Encourage arts as an important part of public buildings.

Recommended Actions or Policies to Help Achieve the Powell Area's Goals and Objectives for Arts and Humanities

POLICY #1 PLAH:

Encourage emphasis of arts and humanities in all educational facilities by utilizing talent of local artists.

POLICY #2 PLAH:

Evaluate the use and appropriateness of making city facilities available for arts and humanities programs.

EMERGENCY PLANNING

Powell Area Goals and Objectives

GOAL #1 PLEP:

Maintain and review the local emergency response plan.

OBJECTIVE #1 PLEP:

Improve education and training of the public and emergency response personnel of what to do in case of emergency.

OBJECTIVE #2 PLEP:

Increase coordination between government agencies involved in emergency preparedness and response.

Recommended Actions or Policies to Help Achieve the Powell Area's Goals and Objectives for Emergency Planning

POLICY #1 PLEP:

Educate and train emergency response personnel about the emergency response plan.

POLICY #2 PLEP:

Continue the annual review of emergency plans and policies.

POLICY #3 PLEP:

Make information available about local fire, emergency, and police departments available to the public.

POLICY #4 PLEP:

Assess emergency response plans in light of growth and development.

FIRE PROTECTION

Powell Area Goals and Objectives

GOAL #1 PLFP:

Provide quality fire protection for the Powell Fire District.

OBJECTIVE #1 PLFP:

Reduce home and grass fires through fire prevention and education.

OBJECTIVE #2 PLFP:

Maintain adequate training, personnel, and equipment.

OBJECTIVE #3 PLFP:

Encourage developers to provide hydrants or supplemental water supply in rural areas.

OBJECTIVE #4 PLFP:

Improve access for fire equipment.

OBJECTIVE #5 PLFP:

Improve response capabilities in the Powell Fire District.

Recommended Actions or Policies to Help Achieve the Powell Area's Goals and Objectives for Fire Protection

POLICY #1 PLFP:

Provide information on proper burning.

POLICY #2 PLFP:

Make information available to the general public, including children, on fire prevention and fire safety.

POLICY #3 PLFP:

Require adequate access for fire trucks in subdivisions and commercial developments.

POLICY #4 PLFP:

Periodically review and update fire protection services.

POLICY #5 PLFP:

Develop a long-term plan to ensure adequate protection and funding.

HEALTH & HUMAN SERVICES

Powell Area Goals and Objectives

GOAL #1 PLHH:

Encourage the development of adequate medical, mental health and human services.

GOAL #2 PLHH:

Encourage the coordination of all health and human services.

OBJECTIVE #1 PLHH:

Strive to maintain medical, mental health and other human services at sufficient levels.

OBJECTIVE #2 PLHH:

Continue to improve emergency medical response.

Recommended Actions or Policies to Help Achieve the Powell Area's Goals and Objectives for Health and Human Services

POLICY #1 PLHH:

Continue to support student counseling in schools and churches.

POLICY #2 PLHH:

Continue to foster youth group and organizations.

POLICY #3 PLHH:

Annually review and evaluate services and programs.

POLICY #4 PLHH:

Promote cooperation between health providers and county government.

POLICY #5 PLHH:

Develop framework for assessing community health needs

POLICY #6 PLHH:

Coordinate efforts to reduce duplication of services.

POLICY #7 PLHH:

Identify new resources to meet changing demands and increasing costs of providing services.

POLICY #8 PLHH:

Develop a public education/information program to make the community aware of available health and human services.

**RECOMMENDED ACTIONS AND POLICIES FOR
HEALTH AND HUMAN SERVICES (cont.)**

POLICY #9 PLHH:

Request ambulance service investigate a comprehensive first responder program.

POLICY #10 PLHH:

Disseminate information about health and human services.

**POLICE/CRIMINAL JUSTICE
Powell Area Goals and Objectives**

GOAL #1 PLPC:

Protect life, liberty, and property through crime prevention and a fair and efficient judicial system.

OBJECTIVE #1 PLPC:

Increase efficiency, cost effectiveness, and standardization of law enforcement and judicial system.

OBJECTIVE #2 PLPC:

Encourage and monitor a court system for criminal and civil cases that ensured rapid, effective justice.

OBJECTIVE #3 PLPC:

Reduce youth crime through community education and enforcement.

OBJECTIVE #4 PLPC:

Maintain a low tolerance for crime.

**Recommended Actions or Policies to Help
Achieve the Powell Area's Goals and
Objectives for Police and Criminal Justice**

POLICY #1 PLPC:

Support aggressive attitude in prosecutor's office.

POLICY #2 PLPC:

Make parents more responsible for juvenile crime and property damage.

POLICY #3 PLPC:

Educate youth to respect the law and understand their responsibility.

POLICY #4 PLPC:

Encourage participation in youth programs.

POLICY #5 PLPC:

Encourage enforcement of existing state criminal statutes.

POLICY #6 PLPC:

Continue to provide for an adequately trained police force.

**EDUCATION
Powell Area Goals and Objectives**

GOAL #1 PLED:

Provide quality education to all citizens.

OBJECTIVE #1 PLED:

Maintain a salary structure that will keep good educators.

OBJECTIVE #2 PLED:

Maintain the level of local control over school districts.

OBJECTIVE #3 PLED:

Continue to offer quality education at reasonable cost to taxpayers.

OBJECTIVE #4 PLED:

Support local school district efforts to provide appropriate school facilities and student-teacher ratio.

**Recommended Actions or Policies to Help
Achieve the Powell Area's Goals and
Objectives for Education**

POLICY #1 PLED:

Consider impact fees for new developments to cover impacts of extra busing, more staff, more buildings.

POLICY #2 PLED:

Seek equitable funding for public education.

POLICY #3 PLED:

Support the expansion of the tax district of NWC to include Big Horn, Hot Springs, and Washakie Counties.

POLICY #4 PLED:

Continue to encourage legislators to vie education priority in state appropriation decisions.

POLICY #5 PLED:

Continue to encourage citizen involvement in the development of school facilities.

POLICY #6 PLED:

Continue to support a balance of academic and extra curricular activities.

SOLID WASTE

Powell Area Goals and Objectives

GOAL #1 PLSW:

Ensure the proper collection and disposal of solid waste.

OBJECTIVE #1 PLSW:

Increase recycling and reuse to reduce waste stream.

OBJECTIVE #2 PLSW:

Maintain a collection system that is safe, efficient, out of sight, convenient, reasonably priced, and state-of-the-art.

Recommended Actions or Policies to Help Achieve the Powell Area's Goals and Objectives for Solid Waste

POLICY #1 PLSW:

Enforce anti-littering regulations.

POLICY #2 PLSW:

Encourage recycling collection at Powell's centers.

POLICY #3 PLSW:

Make information available to people of all ages about recycling and proper disposal of garbage.

POLICY #4 PLSW:

Encourage public entities to recycle materials and to use recycled materials when possible.

POLICY #5 PLSW:

Explore private/public entity to run landfills.

POLICY #6 PLSW:

Explore the possibility of a regularly scheduled household hazardous waste collection points.

TRANSPORTATION

Powell Area Goals and Objectives

GOAL #1 PLTR:

To meet needs for the safe and efficient movements of people, goods, and services.

OBJECTIVE #1 PLTR:

Maintain and improve city streets.

OBJECTIVE #2 PLTR:

Maintain accessibility for disabled citizens.

OBJECTIVE #3 PLTR:

Maintain and improve Powell Airport.

Recommended Actions or Policies to Help Achieve the Powell Area's Goals and Objectives for Transportation

POLICY #1 PLTR:

Encourage the development of bike and pedestrian pathways.

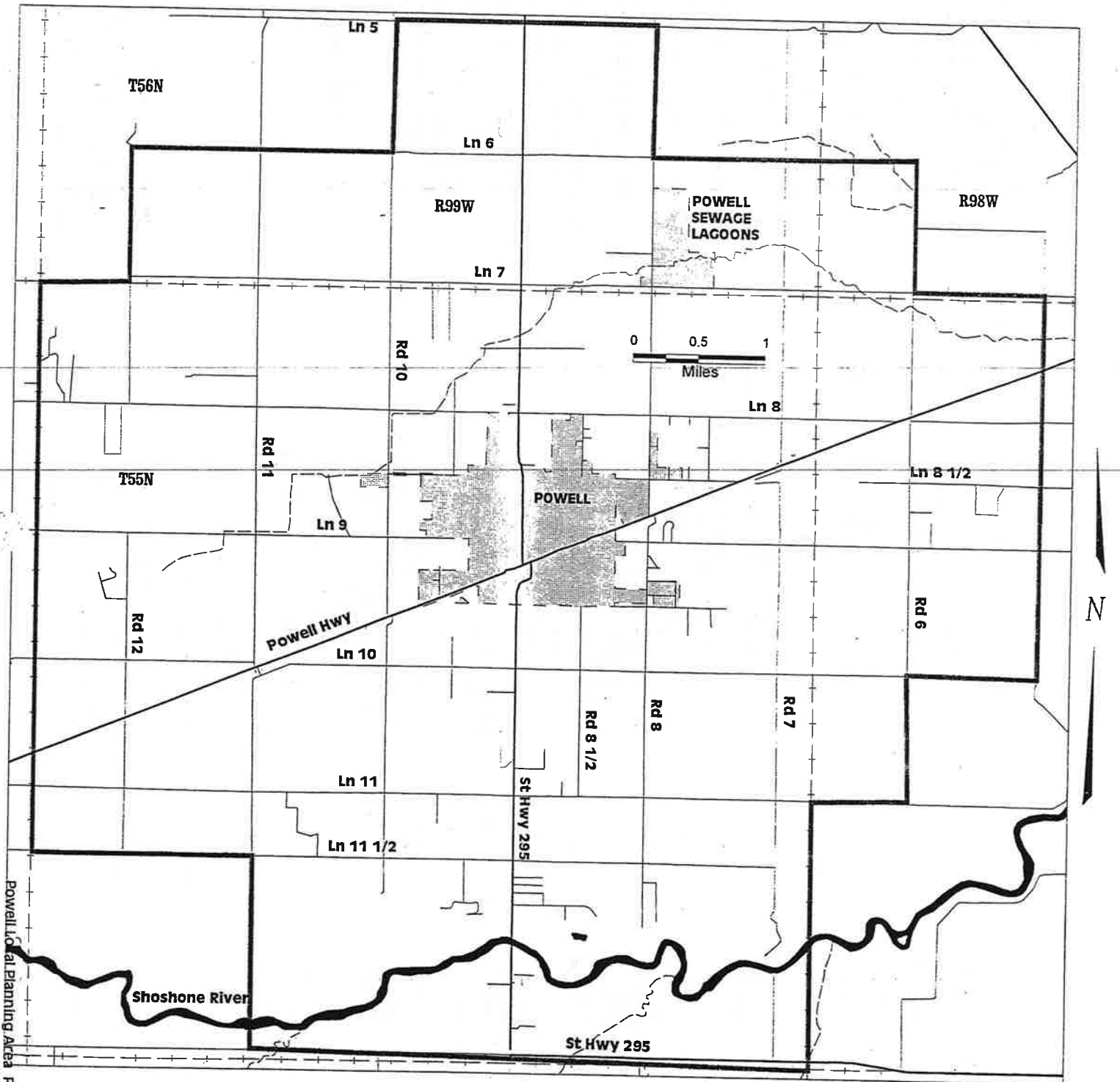
POLICY #2 PLTR:

Encourage compliance with city subdivision regulations.

POLICY #3 PLTR:

Encourage the use and development of the Powell Airport.

POWELL LOCAL AREA



DEFINITION

All words and phrases shall be construed and understood according to the common and approved usage of the language, but technical words and phrases that may have a peculiar and appropriate meaning in the law shall be construed and understood according to such peculiar or appropriate meaning. Some terms used in this CPS are specifically defined as follows unless the context of the CPS clearly indicates otherwise:

Acknowledge:	To take notice and acceptance of and consider with validity.
Conserve:	To protect from loss or depletion.
Cooperate:	To act or work with others to a common end.
Coordinate:	To bring into a common action, movement, or condition.
Crucial Habitat:	The specific area within the geographical area containing those physical or biological features necessary for a wildlife population to maintain and reproduce itself over the long-term.
Culture:	The body of customary beliefs, social forms, material traits including the traditions of racial, religious, and social groups, and their morals, knowledge, customs, religions, law, beliefs, superstitions and art.
Custom:	A common tradition or usage so long established.
Discourage:	To seek to check, hinder or deter by disfavor.
Educate:	To make information available.
Encourage:	To stimulate and inspire with action, courage, spirit, and hope.
Enhance:	To augment or increase.
Holistic:	Emphasizing the organic or functional relationship between parts and wholes.
Home-Based Business:	A commercial activity which is conducted by a person on the same lot as where the person resides, and which is clearly incidental and secondary to the use of the dwelling for residential purposes and does not involve the alterations of residential facilities which change the residential character of the property.

Manage:	To control and direct.
Minimize:	To reduce to the smallest possible number or extent.
Monitor:	The periodic observation and orderly collection of data to evaluate the effects of management actions and the effectiveness of actions in meeting objectives.
Multiple Use:	The management of lands and their resources so that they are utilized in the combination that will best meet the present and future needs of the American people; making the most judicious use of the land for some or all of these resources or related services over areas large enough to provide sufficient latitude for periodic adjustments in use to conform to changing needs and conditions; the use of some land for less than all of the resources; a combination of balanced and diverse resource uses that takes into account the long-term needs of future generations including, but not limited to, recreation, range, timber, minerals, watershed, wildlife and fish, and natural scenic, scientific and historical values; and harmonious and coordinated management of the various resources, each with each other, without permanent impairment of the productivity of the land and the quality of the environment with consideration being given to the relative values of the resources and not necessarily to the combination of uses that will give the greatest economic return or the greatest output per unit.
Preserve:	To keep in tact unless the CPS is amended to permit loss or depletion.
Prevent:	Hinder the progress, appearance, or fulfillment of.
Promote:	To contribute to the growth, enlargement, health or prosperity of.
Protect:	To shield from encroachment or harm in consideration of other factors or needs that might destroy, injure or have detrimentally effects.
Recognize:	To acknowledge.
Reduce:	To diminish in size, extent, amount or number.

Reduce:	To decrease.
Require:	To ask or insist.
Restrict:	To limit by number or condition.
Retail/Commercial:	The sale of goods or services to consumers with the primary aim of obtaining a profit.
Riparian Area:	An area containing both permanent free-flowing water and riparian or water dependant vegetation.
Rural:	An area where agricultural lands, undeveloped lands and open space predominate the landscape, buildings are generally dispersed, and vistas are uninterrupted.
Successional:	Gradual evolution from and replacement of one species by another.
Support:	To encourage.
Sustain:	To keep in existence and prolong.
Sustainable:	Capable of being maintained at length without interruption, weakening, or losing power or quality.
Sustainable Yield:	The achievement and maintenance in perpetuity of a high level annual or regular periodic output of various renewable resources, without impairment of the productivity of the land.
Urban:	An area where dwellings and businesses predominate the landscape, vistas are interrupted by development, buildings are concentrated, and the area has the general characteristics of a town or city.
Wetland:	Areas including lakes, streams, ponds, areas of seasonal standing water, areas with a predominance of wetland vegetation (such as willows, rushes or sedges), or areas with boggy soils. Wetlands do not include areas which are saturated solely by the application of agricultural irrigation water. Manmade lakes or ponds built for the purpose of detaining runoff are not considered wetlands.