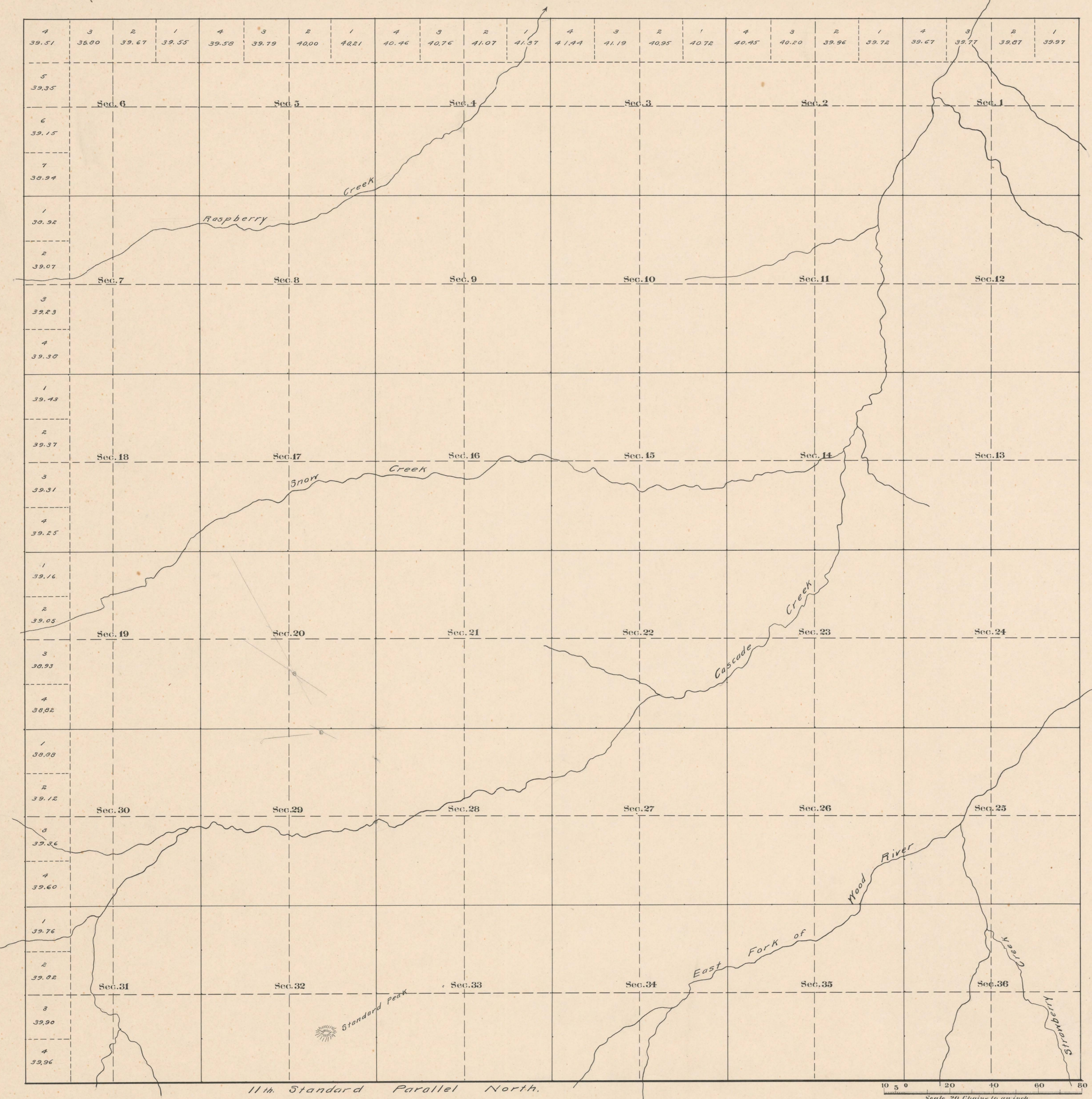


County Roads in Township No 45 North Range No 103 West of the 6th Principal Meridian, Big Horn County, Wyoming



Surveyed E. K. and N. Township Line March 12, 22, 1883.
 Subdivisions June 7-15 1883.
 11th Standard Parallel N. March 5, 6, 1883.

The above Map of County roads in Township No 45 North of Range No 103 West of the 6th Principal Meridian, is strictly conformable to the field notes of the surveys on file in this office which have been examined and approved.
 County Surveyors Office
 Basin, Wyoming. 191

County Surveyor

RECORD OF ROADS								VACATION		
ROAD NO.	JOURNAL NO.	PAGE	WHEN PETITIONED	WHEN ALLOWED ORIGINAL	PETITION FILED	PLAT ON FILE	REMARKS	JOURNAL NO.	PAGE	DATE

Mag. Decl. 19° 10', 19° 15' E.