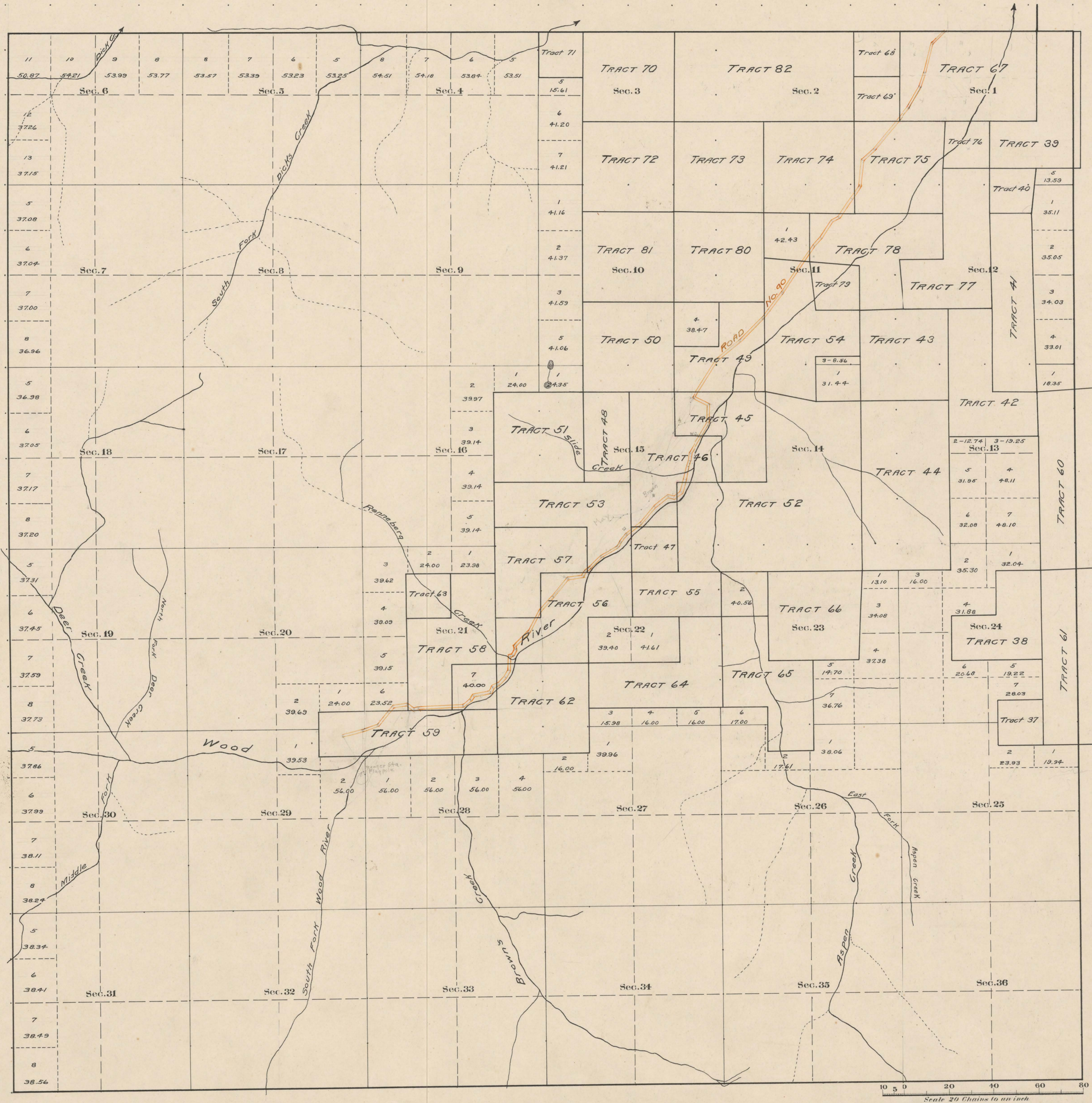


County Roads in Township N^o 46 North Range N^o 102 West of the 6th Principal Meridian, Big Horn County, Wyoming



ROAD NO.	JOURNAL NO.	PAGE NO.	WHEN PARTITIONED	WHEN ALLOWED	ORIGINAL PARTITION BY FILE	FILED BY FILE	REMARKS
30	2	96	192/197	195/197	YES	60'	Wood River Road

Scale 20 Chains to an inch
 The above Map of County roads in Township N^o 46 North of Range N^o 102 West of the 6th Principal Meridian, is strictly conformable to the field notes of the surveys on file in this office which have been examined and approved.
 County Surveyors Office
 Cody, Wyoming, March, 1923
 Howard F. Bell
 County Surveyor.