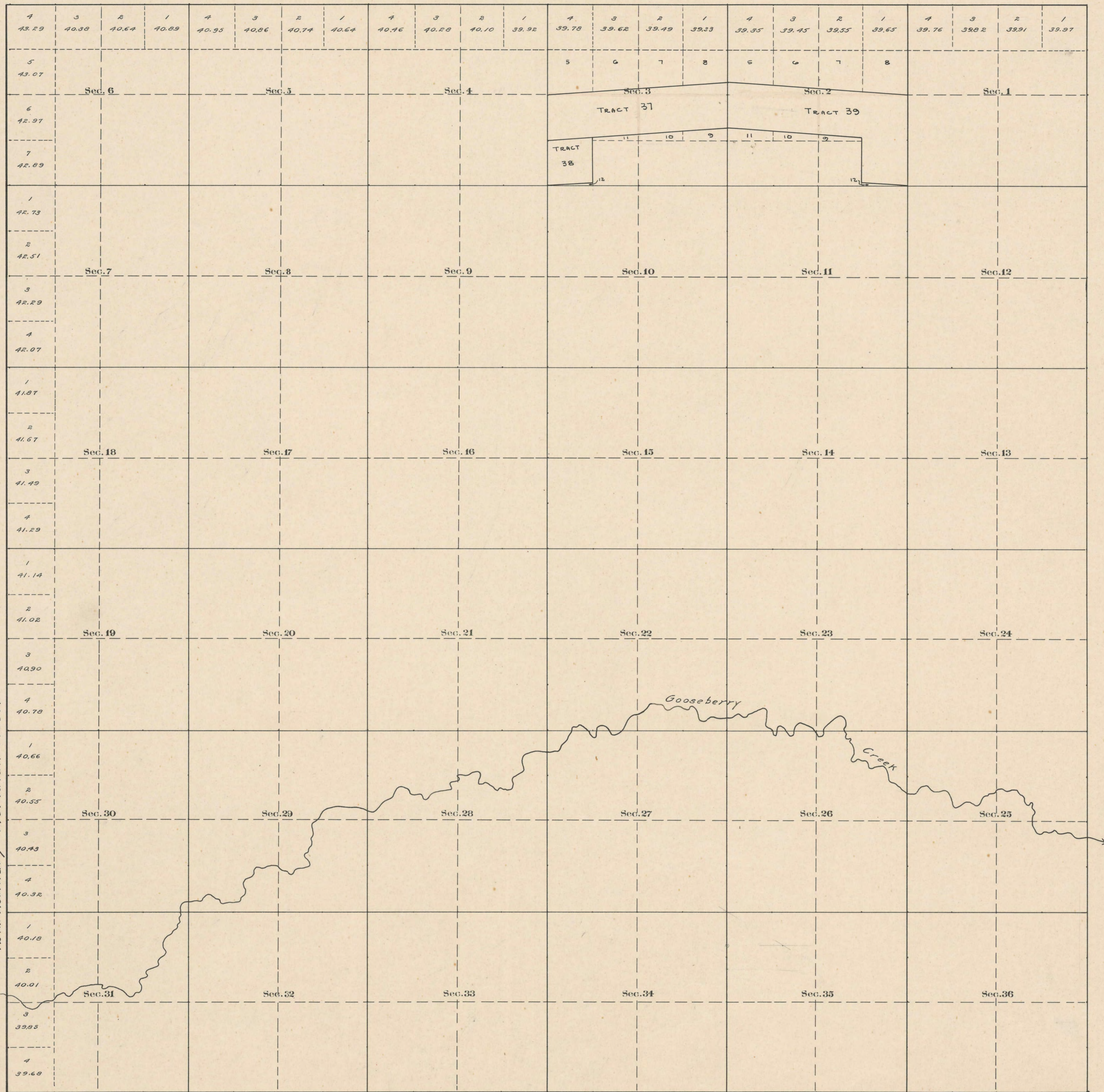


**County Roads in Township No 47 North Range No 100 West of the 6th Principal Meridian, Big Horn County, Wyoming**



RECORD OF ROADS										VACATION		
ROAD No.	JOURNAL No.	PAGE	WHEN PETITIONED	WHEN ALLOWED	ORIGINAL FILED	FILED	PLAT ON FILE	ON FILE	REMARKS	JOURNAL No.	PAGE	DATE

12th. Auxiliary Meridian West.

Surveyed S., E. and N. Township Lines March 7, 8, 10 1883  
 Subdivisions April 16-21, 1883  
 12th. Auxiliary Meridian W. Aug. 13, 1882.

10 5 0 20 40 60 80  
 Scale 20 Chains to an inch

The above Map of County roads in Township No. 47 North of Range No. 100 West of the 6th Principal Meridian, is strictly conformable to the field notes of the surveys on file in this office which have been examined and approved.

County Surveyors Office  
 Basin, Wyoming.

County Surveyor.

Mag. Decl. 19° 56' E.