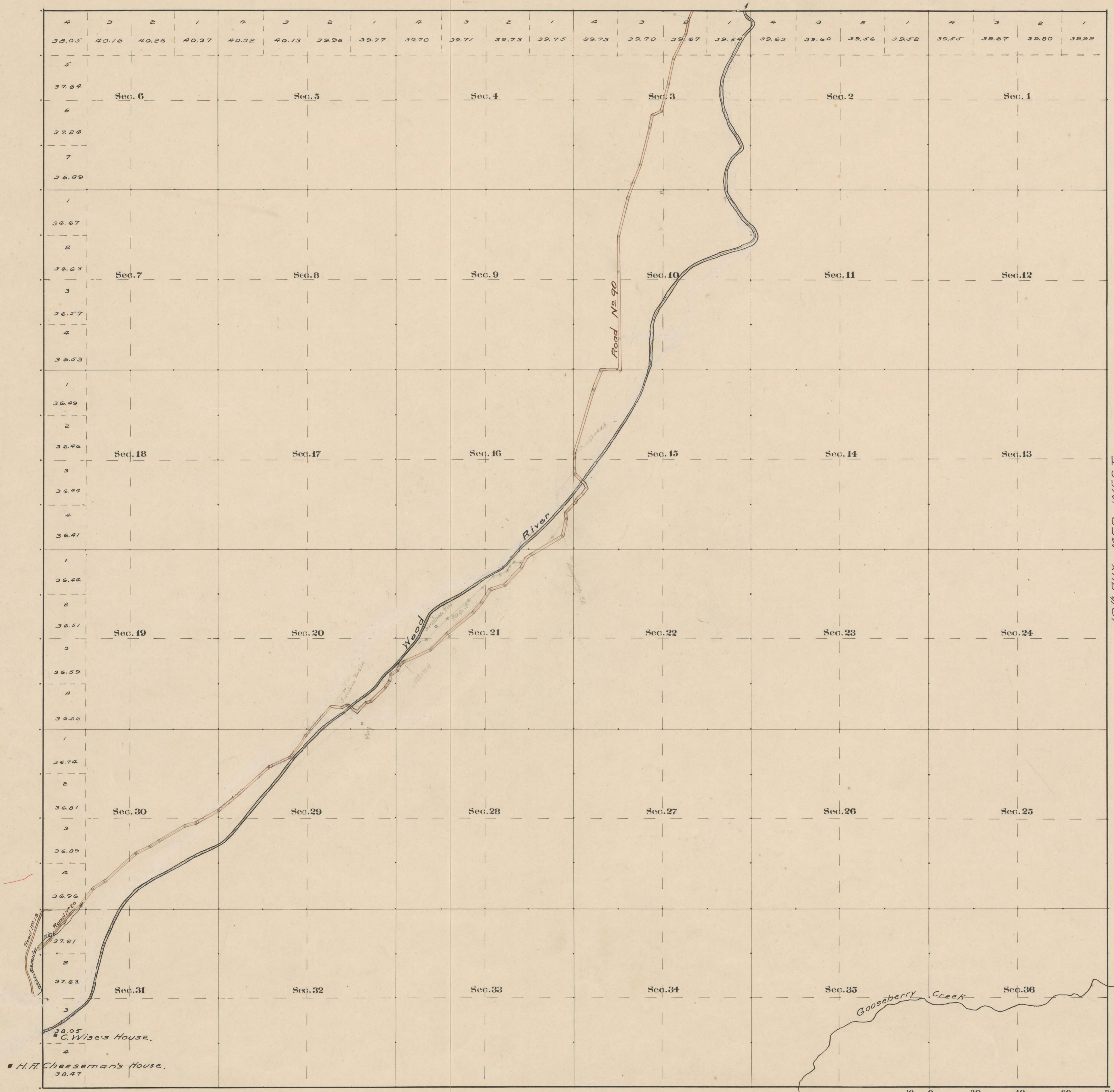


County Roads in Township No 47 North Range No 101 West of the 6th Principal Meridian, Big Horn County, Wyoming



RECORD OF ROADS VACATION														
ROAD NO	TRAVEL DIR	PARSE	WHEN	PETITIONER	WHEN	ALLOWED	ORIGINAL PETITION ON FILE	PLAT	TITLE	REMARKS	TOWNSHIP	PARSE	DATE	
10	1	71	Oct 3-98	Oct 3-98	-	-	-	-	-	Sec. 31				
20	1	98	Apr. 5-99	Oct 3-99	Yes	Yes	-	-	-	Trav. in W. Cor. Sec. 31				
17	1	31	Oct 2-97	Oct 2-97	-	-	-	-	-	Trav. in S.E. Cor. Sec. 31				
19	1	45	Nov 5-98	-	-	-	-	-	-	Trav. in S.E. Cor. Sec. 31				
90	1	97	10/6/1917	10/6/1917	Yes	Yes	-	-	60'	Established according to Sec. 2535				
90a	2	201	10/6/1919	11/5/1919	-	-	-	-	60'					
90b			10/6/1919									2	201	11/3/1919

12th Flux. Mer. West

DEFENDANT'S EXHIBIT #12

Survey Dept. Staff 10/27/19

Surveyed S. W. & N. Tp. Lines, March, 1883.
Subdivisions, April, 1883.
12th Flux. Mer. W.

Scale 20 Chains to an inch

The above Map of County roads in Township No. 47 North of Range No. 101 West of the 6th Principal Meridian, is strictly conformable to the field notes of the surveys on file in this office which have been examined and approved.

County Surveyors Office
Basin, Wyoming. Sept. 27, 1911.

Clyde W. Atchey County Surveyor.