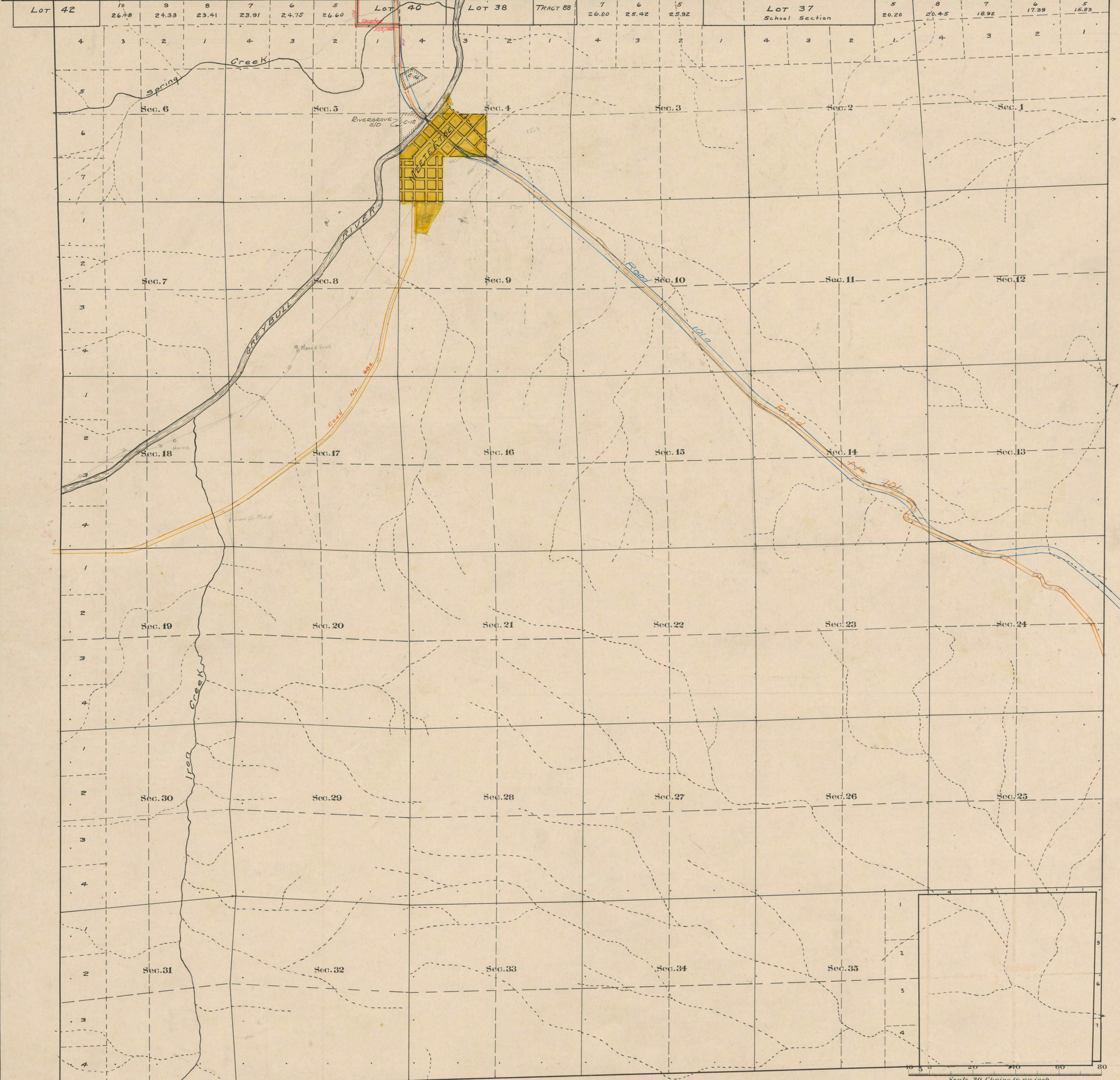


County Roads in Township No 48 North Range No 100 West of the 6th Principal Meridian, Big Horn County, Wyoming



RECORD OF ROADS										VACATED		
Road No	County No	Page	When Performed	When Allowed	Original Section	On File	On File	Remarks	Journal No	Page	Date	
101	2	235	5/20/1921	9/1/1921	yes	60		State Highway				
113	2	115	3/2/1918	8/1/1918	yes	60		McIntosh-Cadine				
114	3	285	8/1/1923	9/5/1923	yes	60		Cody-Montrose				
100			10/1/1924		yes	60		Part of Road 101	3	246	2/10/1924	
101a	3	492	7/2/1925	9/4/1925	yes	200		State Highway				
119	4	308	7/1/1920	10/2/1920	yes	60		Interchange to Lone	4	225	10/2/1920	
160a	4	558	7/16/1925	10/2/1925	yes	60		see McMechie-Blackfoot Rd				

Scale 20 Chains to an inch

The above Map of County roads in Township No. 48 North of Range No. 100 West of the 6th Principal Meridian, is strictly conformable to the field notes of the surveys on file in this office which have been examined and approved.

County Surveyors Office
Cody, Wyoming, Dec. 23rd 1922

Howard F. Bell,
County Surveyor.