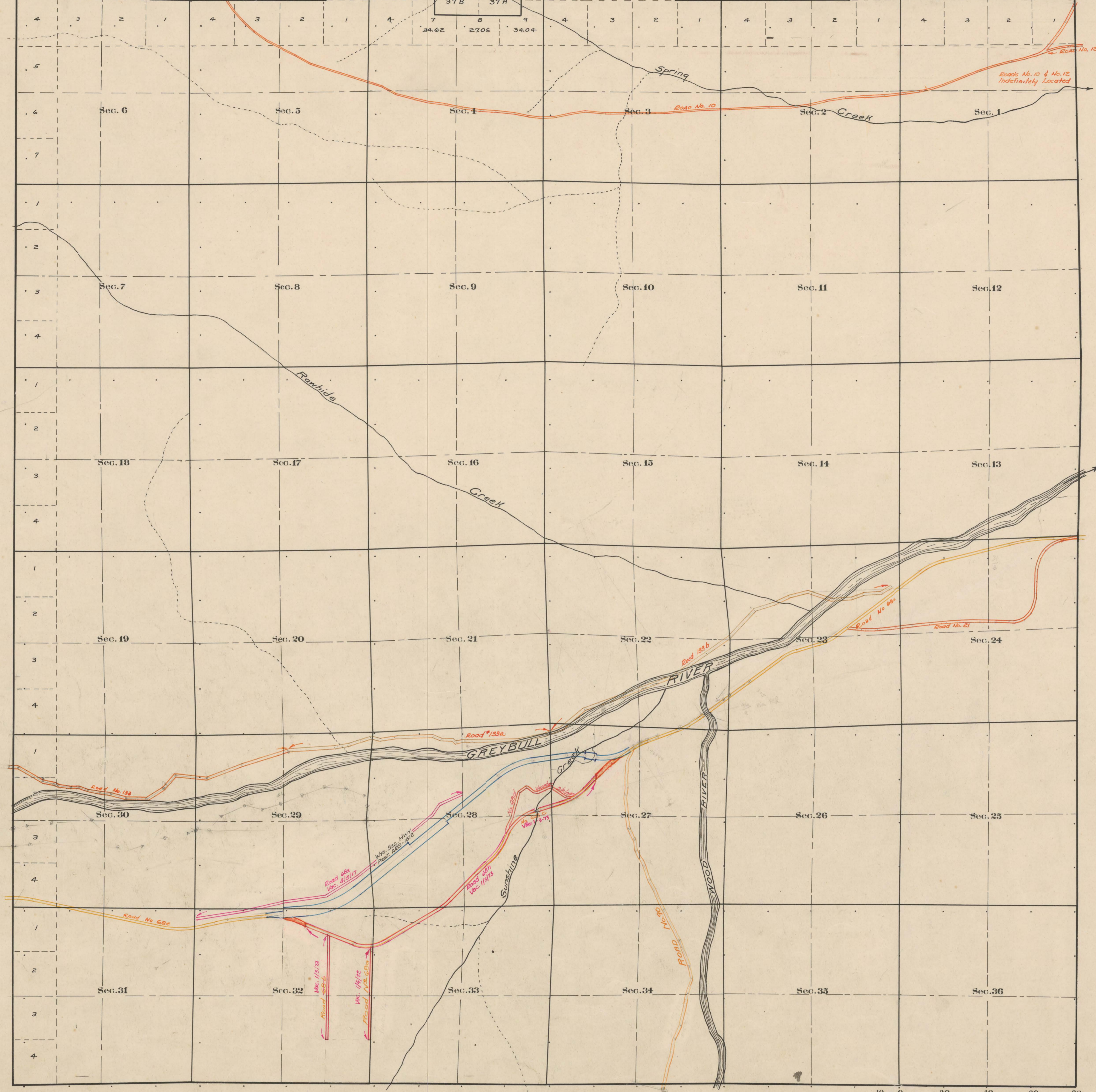


County Roads in Township No. 48 North Range No. 101 West of the 6<sup>th</sup> Principal Meridian, Park County, Wyoming



Road Records						
ROAD No.	JOURNAL No.	PAGE No.	WHEN REVISION MADE	WHEN ALLOWED	Original Position ON FILE	REMARKS
21	1	103	7/6/99	7/6/99	Yes	See B. S. S. 21
10	1	227	7/1/01	8/1/01	Yes	UP SPONGE CREEK
12	1	235	7/6/01	7/6/01	Yes	FROM SEC. 28 & 29 TO 26
68	1	206	1/6/1913	4/7/1914	✓	MEASURE - FOUR BEAR ROAD
68A	2	223		2/1/20	60	Sunshine Basin Rd.
68B	2	311		1/4/22	60	Vacated 1/22 Bk. 2, Page 311
20	2	16	10/2/17	11/3/17	60	Vacated 1/3/73 Bk. 8, Page 389
68C	2	176	3/6/1920	3/6/1920	60	Vacated 1/3/73 Bk. 8, Page 389
68D	2	176	3/6/1920	3/6/1920	60	Vacated 1/3/73 Bk. 8, Page 389
133	4	342	8/5/36	1/8/42	60	
68E	4	350	7/14/1945	10/2/1945	60	Meekate - Pitchfork Highway
133A	5	381	7/7/52	10/5/52	60	
133B	5	422	7/6/55	4/6/55	60	
68H	8	397	Resolution 11-8-72	1/3/73		Vac. SW <sup>1</sup> / <sub>4</sub> Sec. 27; All Sec. 28, 29; E <sup>1</sup> / <sub>2</sub> NE <sup>1</sup> / <sub>4</sub> E <sup>1</sup> / <sub>2</sub> NW <sup>1</sup> / <sub>4</sub> Sec. 32. Wa. Sec. Hwy, Conv. 1946, 1954
68K	2	48	4/5/17	4/5/17	-	Vacated - See above

Scale 20 Chains to an inch

The above Map of County roads in Township No. 48 North of Range No. 101 West of the 6<sup>th</sup> Principal Meridian, is strictly conformable to the field notes of the surveys on file in this office which have been examined and approved.

County Surveyors Office  
 Cody, Wyoming. MARCH, 13, 1923

Howard F. Bell,  
 County Surveyor.