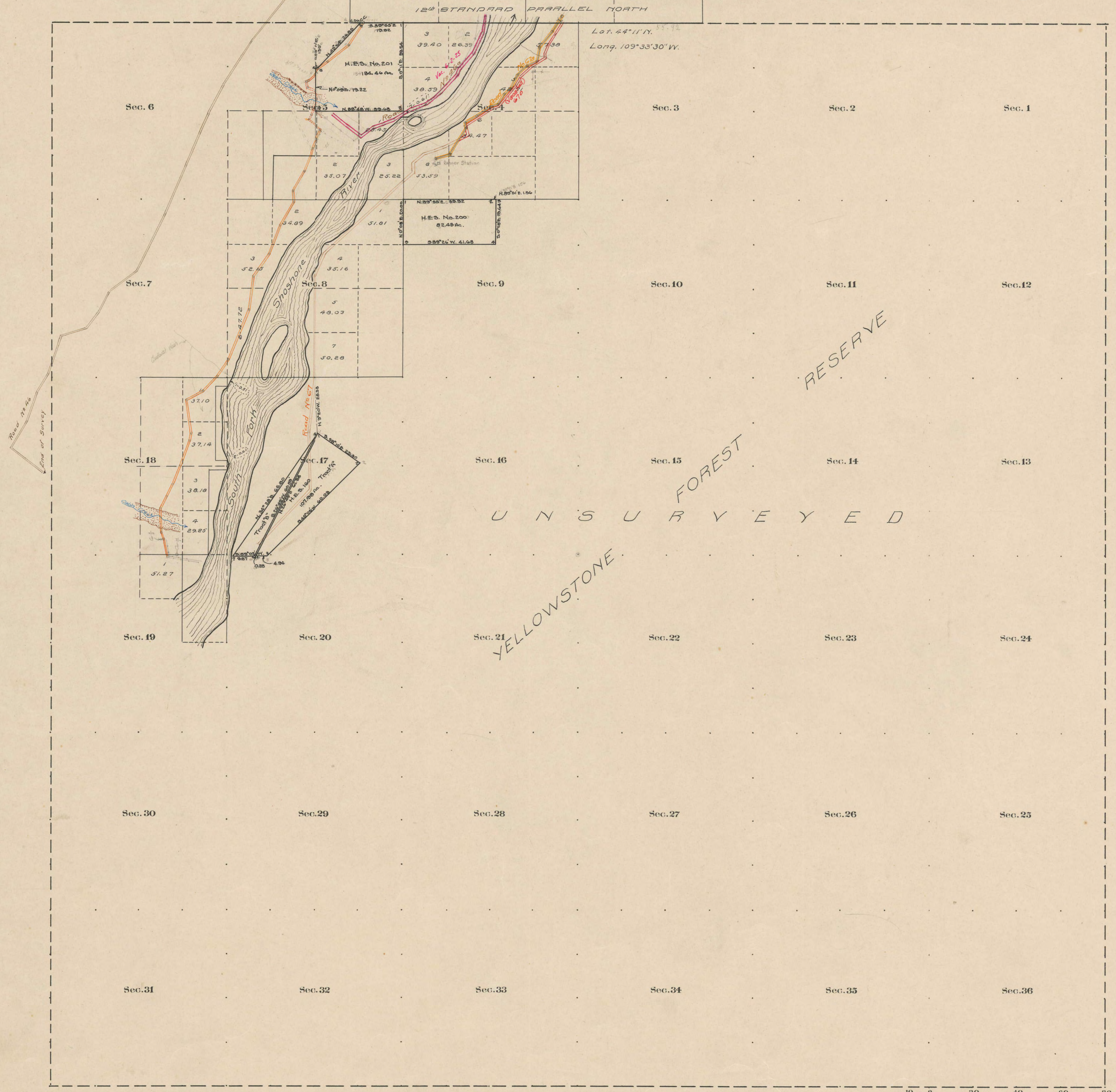


County Roads in Township No. 48 North Range No. 106 West of the 6th Principal Meridian, Big Horn County, Wyoming



RECORD OF ROADS										VACATION		
ROAD NO.	JOURNAL NO.	PAGE	WHEN PETITIONED	WHEN ALLOWED	ORIGINAL PATH FROM FILE	CITY FILE	REMARKS	JOURNAL NO.	PAGE	DATE		
46	1	286	Feb. 5, 1887	Mar. 4, 1887	-	-	Surveyed by G.W. Murbach, Co. Surveyor					
67	1	134	Apr. 1912	Nov. 2, 1912	Yes		Surveyed by G.W. Murbach, Co. Surveyor					
67a	2	401	5/2/1923	Apr. 3, 1923	Yes		Partion Vacated					
67b	3	401	5/2/1923	Apr. 3, 1923	Yes		Partion Vacated					
67c	3	401	5/2/1923	Apr. 3, 1923	Yes		Partion Vacated					
67d	3	401	5/2/1923	Apr. 3, 1923	Yes		Partion Vacated					
46a	1	212	Apr. 1914	5/6/1914	Yes		Surveyed by G.W. Murbach, Co. Surveyor					
46b	2	401	8/21/1923	6/2/1923	Yes		Surveyed by G.W. Murbach, Co. Surveyor					

Scale 20 Chains to an inch

The above Map of County roads in Township No. 48 North of Range No. 106 West of the 6th Principal Meridian, is strictly conformable to the field notes of the surveys on file in this office which have been examined and approved.
 County Surveyors Office
 Basin, Wyoming, Sept. 30, 1911.

Clyde W. Atchey
 County Surveyor