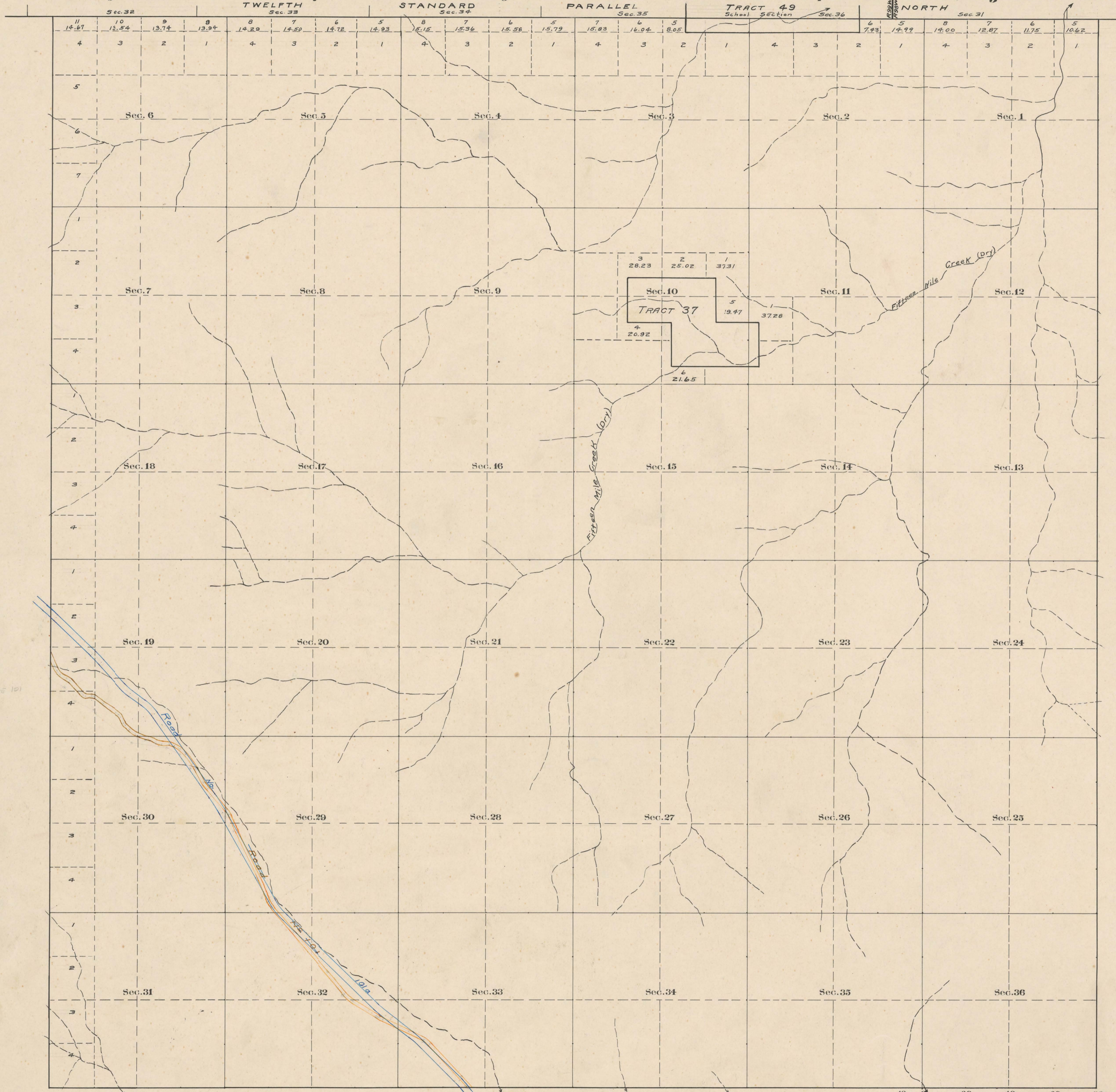


County Roads in Township No 48 North Range No 99 West of the 6th Principal Meridian, Big Horn County, Wyoming



RECORD OF ROADS							VACATION			
ROAD NO.	JOURNAL No.	PAGE	WHEN PETITIONED	WHEN ALLOWED	ORIGINAL PET. FILED OR FILE	FILED ON FILE	REMARKS	JOURNAL No.	PAGE	DATE
9	1	95	Apr. 5, 1899	Apr. 4, 1899	Yes		Reference to Road No. 101 in the map			
101	2	215	May 20, 1901	Sept. 7, 1901	Yes		Reference to Road No. 101 in the map			
101a	3	492	7/1/1932	9/4/1932	Yes		Reference to Road No. 101 in the map			

Scale 20 Chains to an inch
 The above Map of County roads in Township No. 48 North of Range No. 99 West of the 6th Principal Meridian, is strictly conformable to the field notes of the surveys on file in this office which have been examined and approved.
 County Surveyors Office
 Cody Wyoming, Dec. 22, 1922.
 Howard F. Bell,
 County Surveyor.