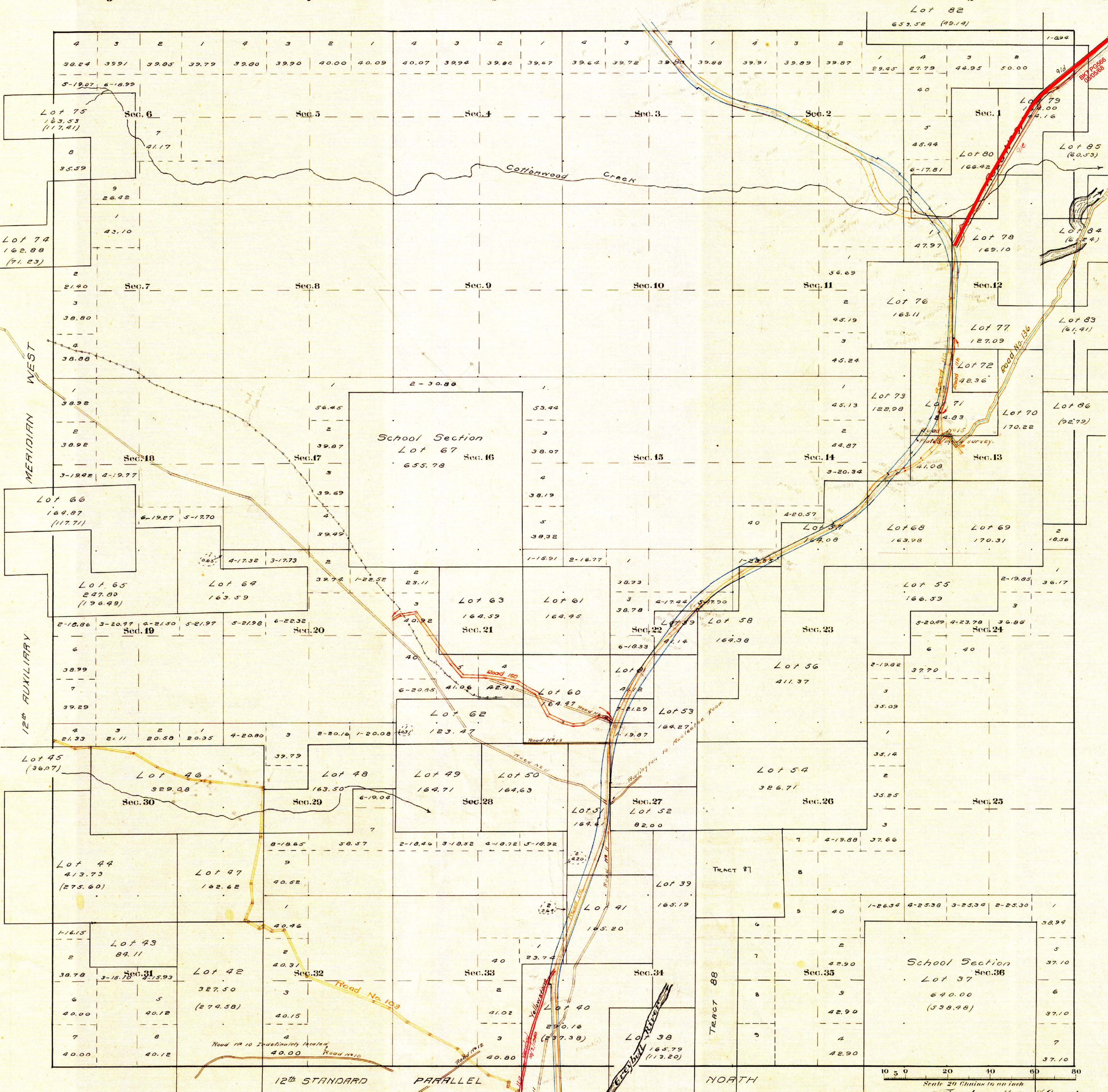


County Roads in Township N^o 49 North Range N^o 100 West of the 6th Principal Meridian, Big Horn County, Wyoming



RECORD OF ROADS										VACATION		
ROAD NO.	FOUNDED BY	DATE	WHEN	WHEN	ALLOWED	ORIGINAL FILE	FILE	FILE	FILE	FILE	FILE	FILE
11	1	257	Sept. 4-01	Dec. 30-02	-	Yes	Section 16, Range 100 N., Township 49 N., Big Horn County, Wyo.					
12	1	255	July 2-01	Sept. 1-01	Yes							
13	1	256	Jan. 2-01	Jan. 2-01	Yes							
14	1	258	Feb. 2-05	Mar. 2-05	Yes							
15	2	218	Sept. 7-10	Dec. 28-10	-	Yes	300 ft. wide, in Sec. 16.					
10	1	227	June 1-01	June 1-01	Yes		Width in Spring Creek					
99	2	232	May 5-12	July 9-12	Yes		80' State Highway					
103							Meeteetse River					
91	2	171	4/1/1915	3/5/1917	✓		60' wide, in Sec. 16, Range 100 N., Township 49 N., Big Horn County, Wyo.					
110	3	391	7/5/1936	7/5/1936	✓		40' wide, in Sec. 16, Range 100 N., Township 49 N., Big Horn County, Wyo.					
112	3	355	8/1/1933	9/2/1933	Yes		40' wide, in Sec. 16, Range 100 N., Township 49 N., Big Horn County, Wyo.					
115	3	435	4/8/1936	10/1/35	-		40' wide, in Sec. 16, Range 100 N., Township 49 N., Big Horn County, Wyo.					
116	4	229	11/1/1900	4/2/1900	-		40' wide, in Sec. 16, Range 100 N., Township 49 N., Big Horn County, Wyo.					
136	5	510	12/1/1933	12/1/1933	✓		40' wide, in Sec. 16, Range 100 N., Township 49 N., Big Horn County, Wyo.					
91a	7	560	3/4/1908	3/4/1908	Yes		40' wide, in Sec. 16, Range 100 N., Township 49 N., Big Horn County, Wyo.					
118	8	485	Resolution	1/6/71	-		40' wide, in Sec. 16, Range 100 N., Township 49 N., Big Horn County, Wyo.					
150	8	55	Res. of Board	6/7/50	-		40' wide, in Sec. 16, Range 100 N., Township 49 N., Big Horn County, Wyo.					
7	566	ESTABLISH	03/05/68	YES								

Latitude 46°10'N.
Longitude 108°56'W.
Mag. Decl. 18°15'E.

Surveyed & Resurveyed N.E. & N. Tp. Lines, July-Aug., '05.
Subdivisions, Sep., '05.
Connections, Sep., '05.
Private Land Claims, Aug-Sep., '05.
South Boundary, July, '05.

CERTIFICATE OF SURVEYOR
I, PAUL R. CAMPBELL OF CODY, WYOMING, REGISTERED LAND SURVEYOR IN THE STATE OF WYOMING, HEREBY CERTIFY THAT THIS PLAT WAS PREPARED BY ME AND UNDER MY SUPERVISION BASED ON RESEARCH OF PUBLIC COUNTY COMMISSIONER'S MINUTES DATED FROM 1866 TO 1911. FIELD SURVEYS WERE NOT PERFORMED BY ME AND THE PLATS ARE ACCURATE TO THE BEST OF MY KNOWLEDGE.
PAUL R. CAMPBELL
WYOMING REGISTRATION NO. 151 LS

The above map of County roads in Township N^o 49 North of Range N^o 100 West of the 6th Principal Meridian, is strictly conformable to the field notes of the surveyors on file in this office which have been examined and approved.
County Surveyors Office
Basin, Wyoming, Sept. 25, 1911

Clyde W. Atchley
County Surveyor