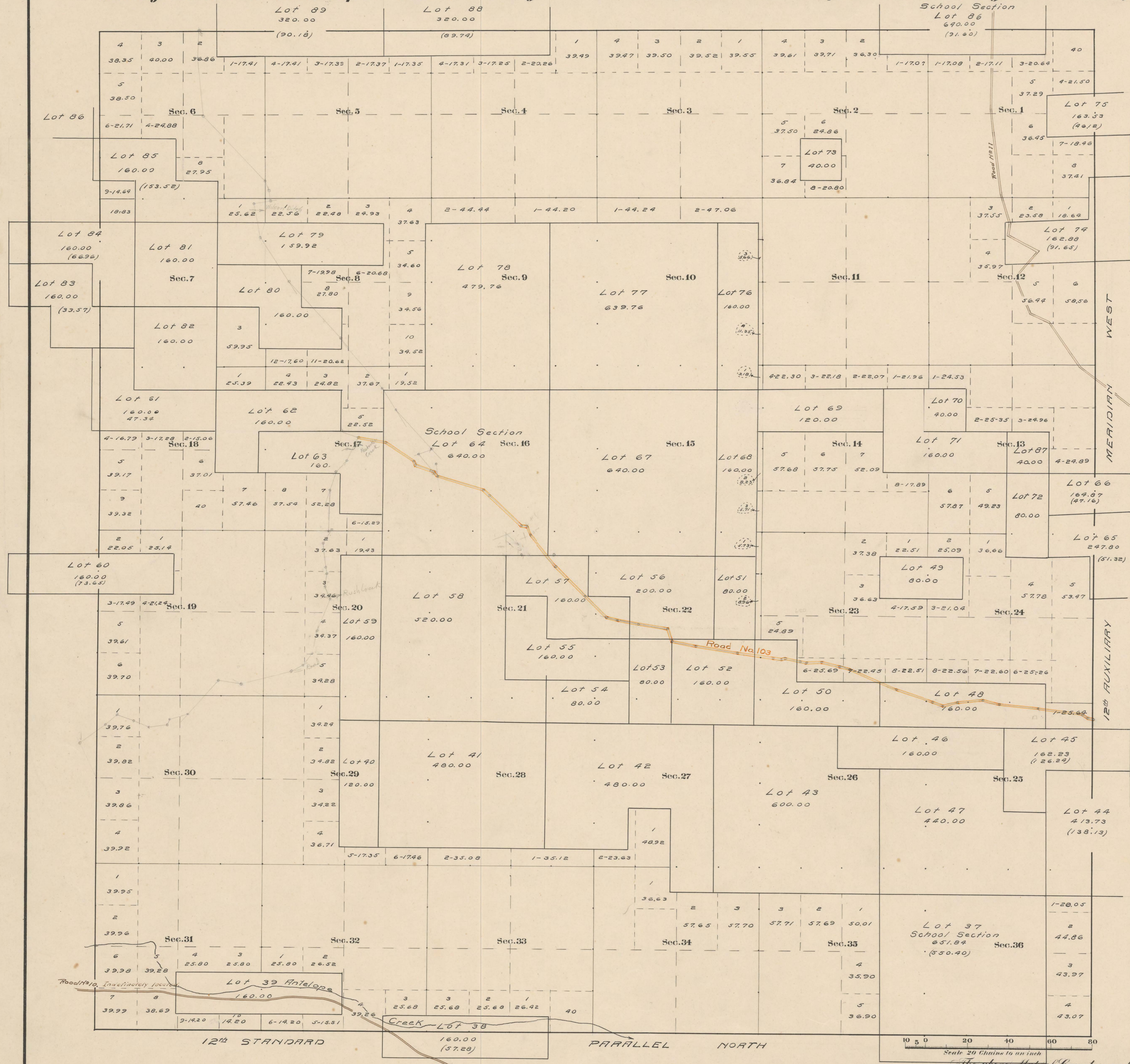


County Roads in Township No. 49 North Range No. 101 West of the 6th Principal Meridian, Big Horn County, Wyoming



RECORD OF ROADS										VACATION	
ROAD NO.	TOWNSHIP	RANGE	SECTION	DATE	BY WHOM	REMARKS	APPROVED	FILED	DATE	FILED	DATE
10	49	101	1	227	June 9, 01	Wm. H. ...	YES	770	Up Spring Creek		
11	49	101	1	237	Sept. 9, 01	Dec. 30, 02		780	Meridian to Sec. 10		
103											

Latitude 44° 10' N.  
Longitude 109° 3' W.  
Mag. Decl. 18° 10' E.

Surveyed - Tp. Lines, July-Aug., 1905.  
Subdivisions, Sep., "  
Connections, " "  
Private Land Claims, Aug-Sep., 1905.

The above map of County roads in Township No. 49 North of Range No. 101 West of the 6th Principal Meridian, is strictly conformable to the field notes of the surveys on file in this office which have been examined and approved.  
County Surveyors Office  
Basin, Wyoming, Sept. 27, 1911.  
Clyde W. ...  
County Surveyor.