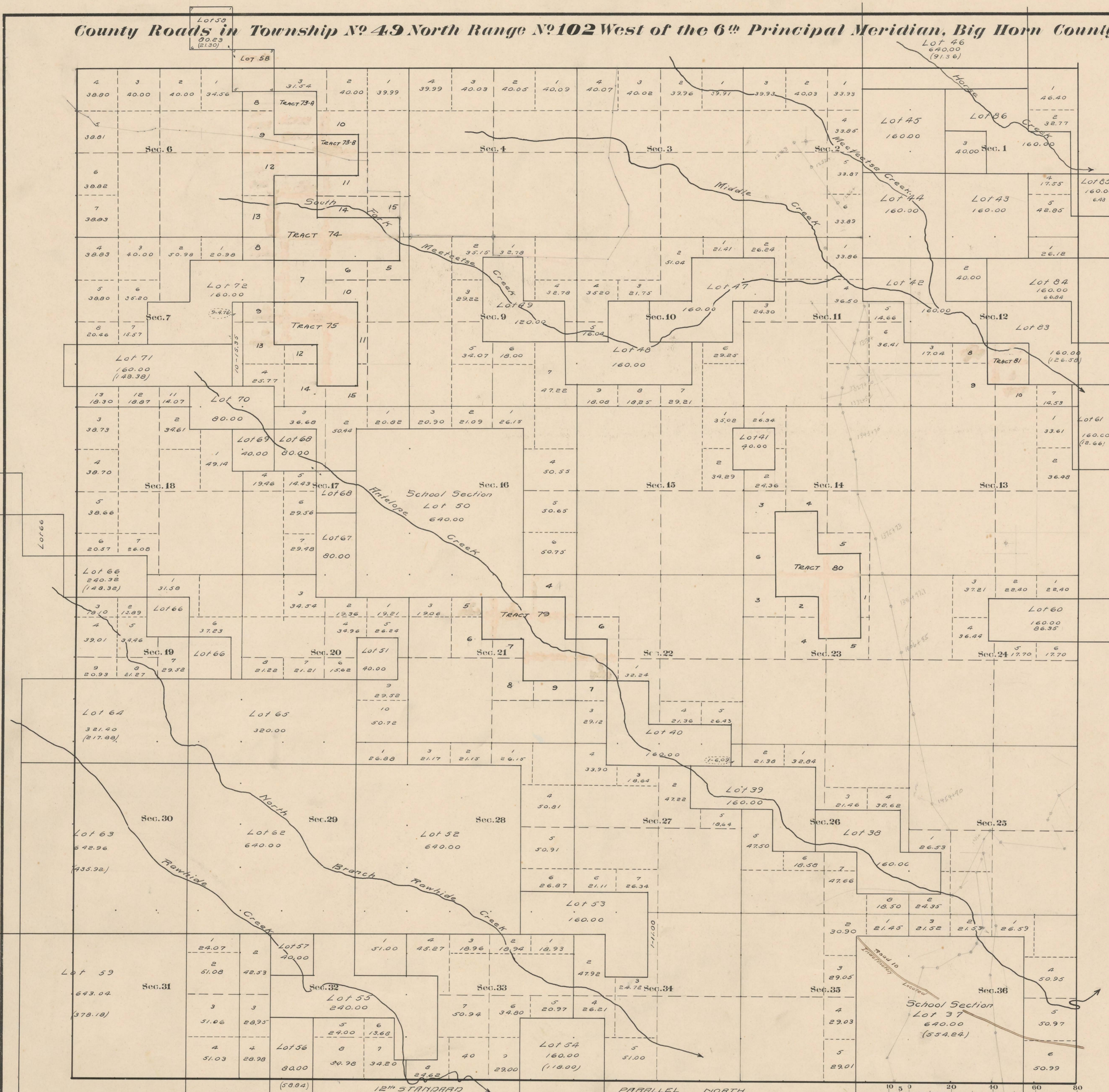


County Roads in Township N^o 49 North Range N^o 102 West of the 6th Principal Meridian, Big Horn County, Wyoming



| RECORD OF ROADS | | | | | | | | | | VACATION | | | |
|-----------------|-------------|------|-----------|---------------------------------------|------|---------|---------------|----------|---------|-----------------|-------------|------|------|
| ROAD NO. | JOURNAL NO. | PAGE | WHEN | PETITIONED | WHEN | ALLOWED | ORIGINAL FILE | REPLACED | ON FILE | REMARKS | JOURNAL NO. | FILE | DATE |
| 10 | 1 | 227 | June 9-10 | By Order of the Board of Public Works | Yes | No | No | No | No | Up Spring Creek | | | |

Latitude 44° 10' N
 Longitude 109° 03' W
 Mag. Dec. 18° 15' E.

The above Map of County roads in Township No. 49 North of Range No. 102 West of the 6th Principal Meridian, is strictly conformable to the field notes of the surveys on file in this office which have been examined and approved.
 County Surveyors Office
 Basin, Wyoming, Sept. 19, 1911
 Clyde W. Atchley
 County Surveyor.