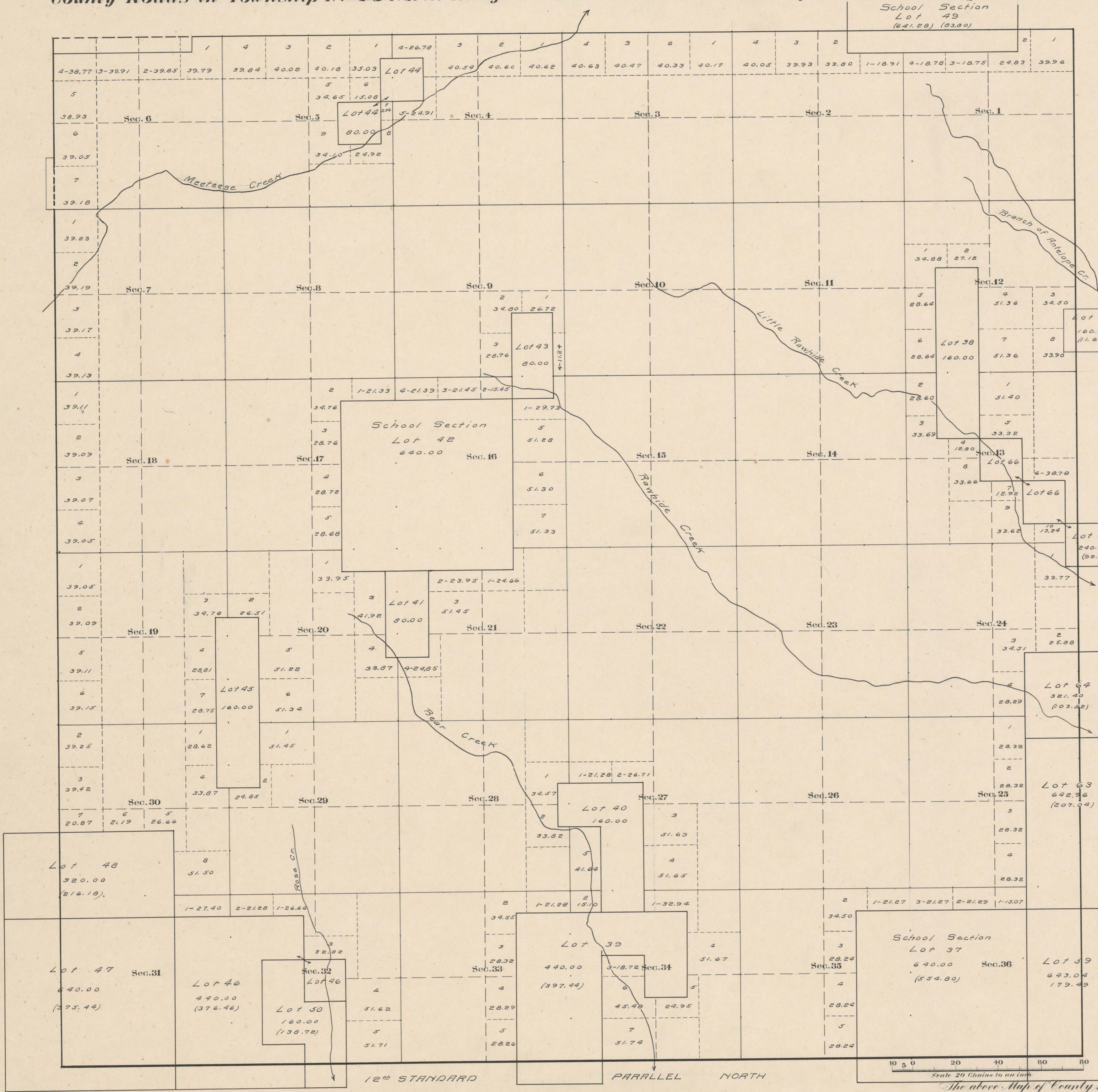


County Roads in Township N^o 49 North Range N^o 103 West of the 6th Principal Meridian, Big Horn County, Wyoming



RECORD OF ROADS VACATION										
ROAD N ^o	JOURNAL N ^o	PAGE	WHEN	PETITIONED	WHEN	ALLOWED	ORIGINAL PETITION ON FILE	FILE	REMARKS	VACATION

Latitude 44° 10' N.
Longitude 103° 10' W.
Mag. Decl. 18° 10' E.

Surveyed: Resurvey Township Lines Aug. 1-11, 1905
 Subdivisions Sep. 13-Oct. 11, 1905.
 Connections " " " "
 Segregated Lots " 2-13, "

The above Map of County roads in Township N^o 49 North of Range N^o 103 West of the 6th Principal Meridian, is strictly conformable to the field notes of the surveys on file in this office which have been examined and approved.
 County Surveyor's Office
 Basin, Wyoming. 191
 County Surveyor.