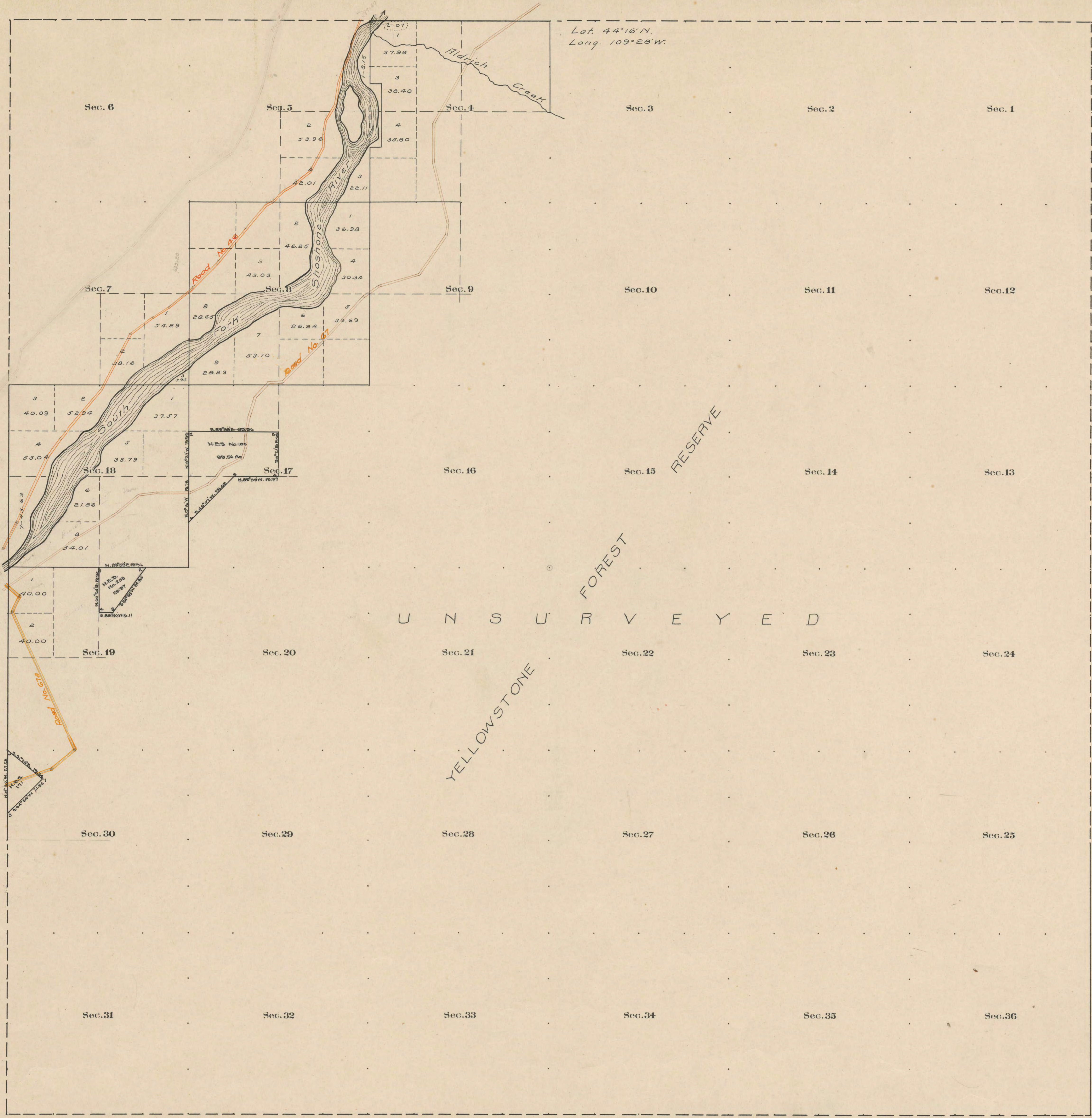


County Roads in Township No 49 North Range No 105 West of the 6th Principal Meridian, Big Horn County, Wyoming



RECORD OF ROADS VACATION										
ROAD NO.	JOURNAL NO.	PAGE	WHEN PETITIONED	WHEN ALLOWED	ORIGINAL PETITION ON FILE	PLAT FILED	REMARKS	JOURNAL NO.	PAGE	DATE
46	1	286	Feb. 5, 08	March, 08	-	-	of same section surveyed by (17)			
67	1	134	Apr-1912	Nov-9, 1912	Yes	Width	Surveyed by G. W. Purdy, Sec. 5			NEVER COMPLETED
67a	3	604	3/8/1937	4/7/1937	Yes	60'				
67b	3		3/2/1931						3	604 4/7/1937

The above Map of County roads in Township No. 49 North of Range No. 105 West of the 6th Principal Meridian, is strictly conformable to the field notes of the surveys on file in this office which have been examined and approved.

County Surveyors Office
Basin, Wyoming, Sept. 29, 1911.

Edw. W. Atchley, County Surveyor.