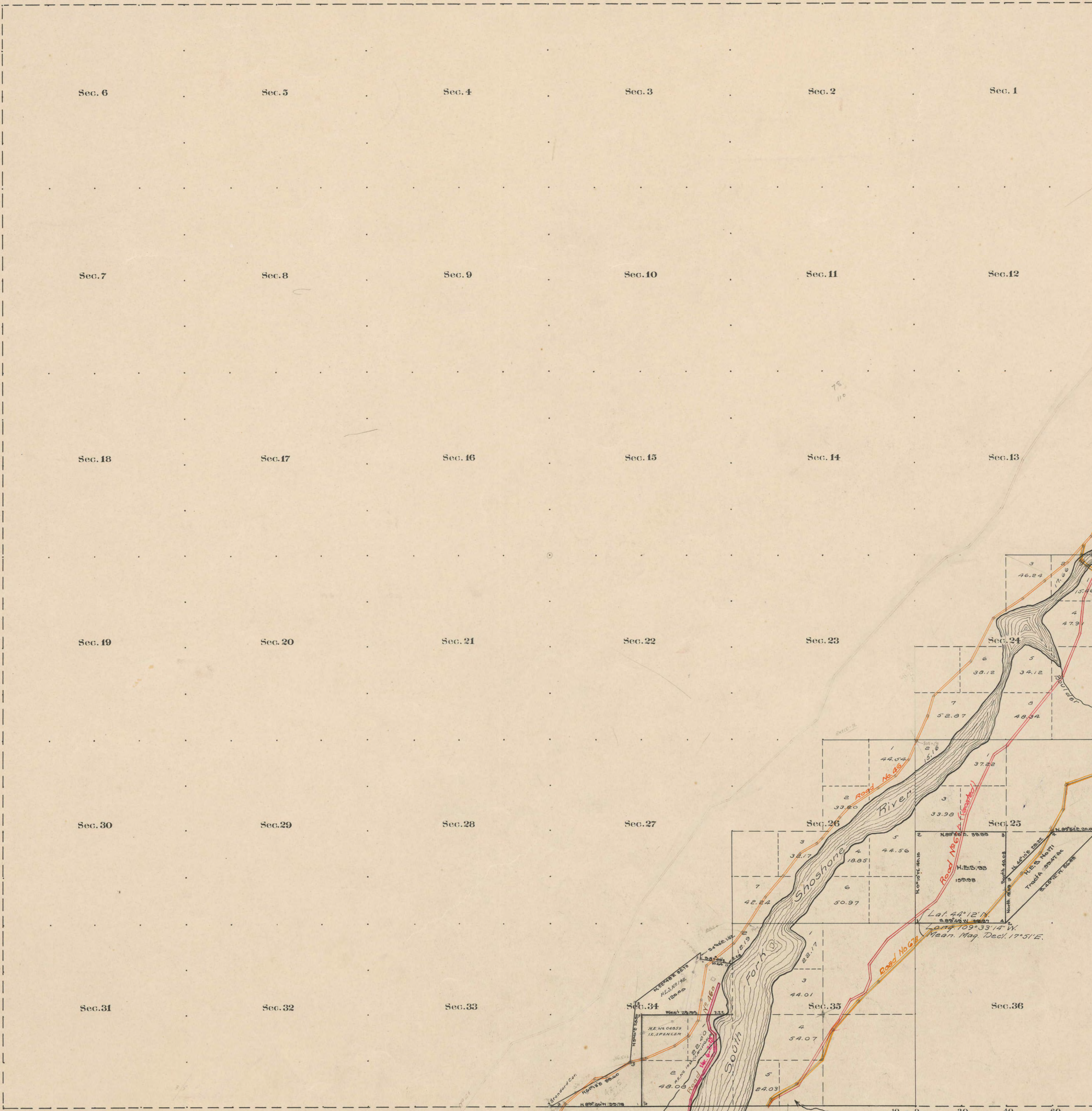


County Roads in Township No 49 North Range No 106 West of the 6th Principal Meridian, Big Horn County, Wyoming



RECORD OF ROADS										VACATION	
ROAD No.	JOURNAL No.	PAGE	WHEN	WHEN	WHEN	APPROVAL BY	APPROVAL BY	REMARKS	JOURNAL No.	PAGE	DATE
			APPLIED FOR	ALLOWED	APPROVED	FILE	FILE				
46	1	280	Feb 5, 02	Mar 4, 02				South Fork of Shoshone River			
67	1	134	Apr. 1912	Nov. 9, 1912	Yes			Surveyed by S. W. Atchey			
46a	2	344	9/5/1922	9/6/1922				Section vacated by order of Board of Supervisors			
67a	3	604	9/5/1927	4/7/1927	✓			Section vacated by order of Board of Supervisors	604	April 7, 1927	
46a	1	212	Apr 1914	5/6/1914	✓			Portion of Road No. 46			Altered
46b	2	481	8/21/1923	6/2/25	✓			Road No. 46			Altered

The above Map of County roads in Township No. 49 North of Range No. 106 West of the 6th Principal Meridian, is strictly conformable to the field notes of the surveys on file in this office which have been examined and approved.
 County Surveyors Office
 Basin, Wyoming, Sept. 30, 1911.
 Supt. W. Atchey
 County Surveyor.