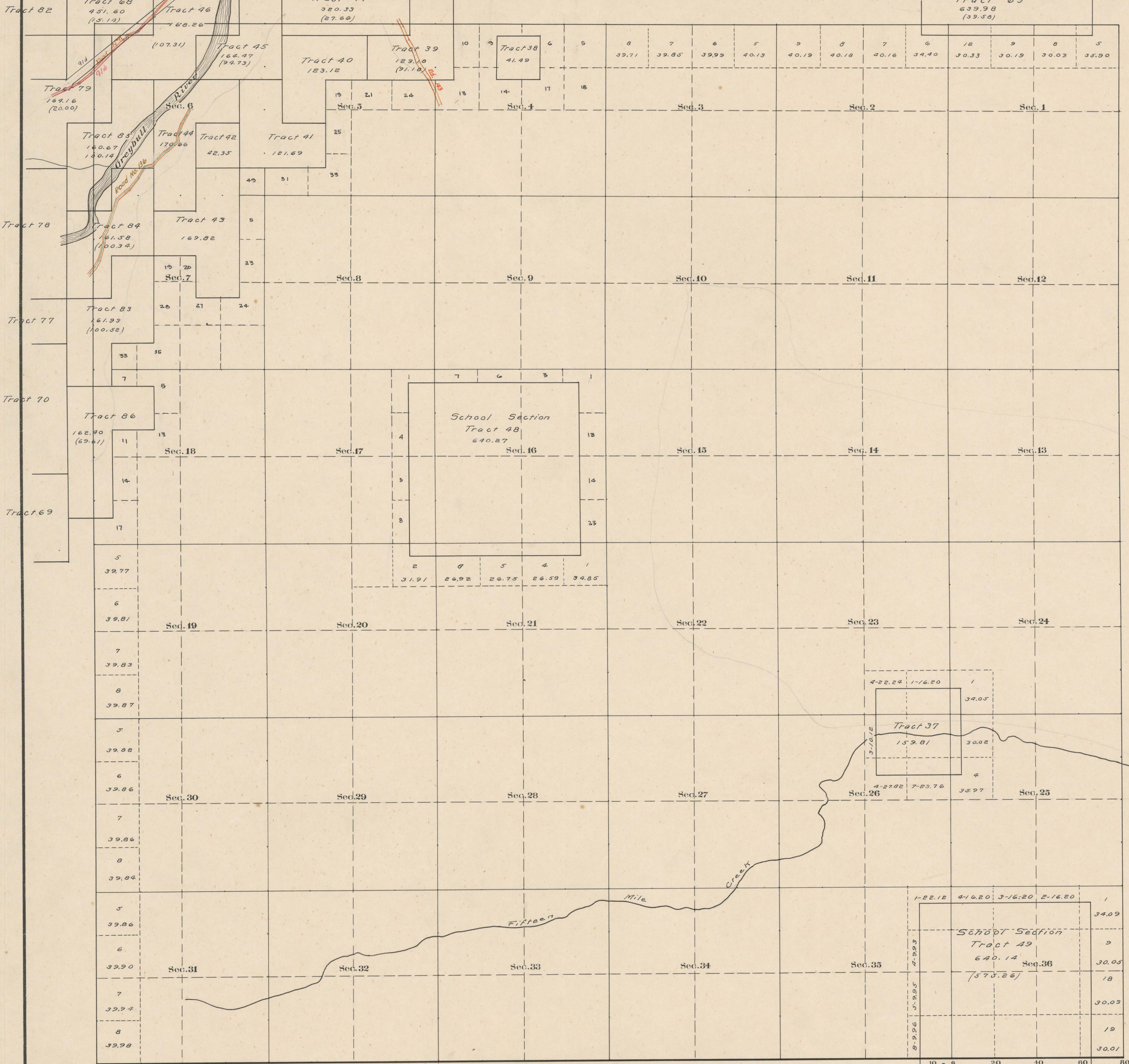


County Roads in Township No 49 North Range No 99 West of the 6th Principal Meridian, Big Horn County, Wyoming



RECORD OF ROADS										VACATION	
ROAD No.	JOURNAL No.	RANGE	SECTION	WHEN PETITIONED	WHEN ALLOWED	ORIGINAL MAP FILE	FILE No.	REMARKS	JOURNAL No.	PAGE	DATE
91	2	171	21	9/10/1918	5/21/1919	✓	60	Abolished by Statute			
136	5	510	12/11/1893	12/11/1893							
91d	7	664	3/16/187	3/16/188	✓	60	See also Road No. 86				
91e											
143	9	235	Eastment	5/16/77					7	577	5/7/188

Latitude 44°10' N
 Longitude 108°41' W
 Mag. Decl. 17°34' E.

Surveyed - Resurvey, N. & E. Tp. lines, Sep. 7-12, 1906.
 " Subdivisions, " 13-29, 1906.
 Connections " " " "
 Segregated Tracts, April 8-16, 1907.
 West Boundary, August 4-5, 1905.
 Resurvey South Bdry, July 24-25, 1905.

Scale 20 Chains to an inch

The above Map of County roads in Township No. 49 North of Range No. 99 West of the 6th Principal Meridian, is strictly conformable to the field notes of the surveys on file in this office which have been examined and approved.
 County Surveyors Office
 Basin, Wyoming, Sept 8 1911

Alfred W. Athey
 County Surveyor