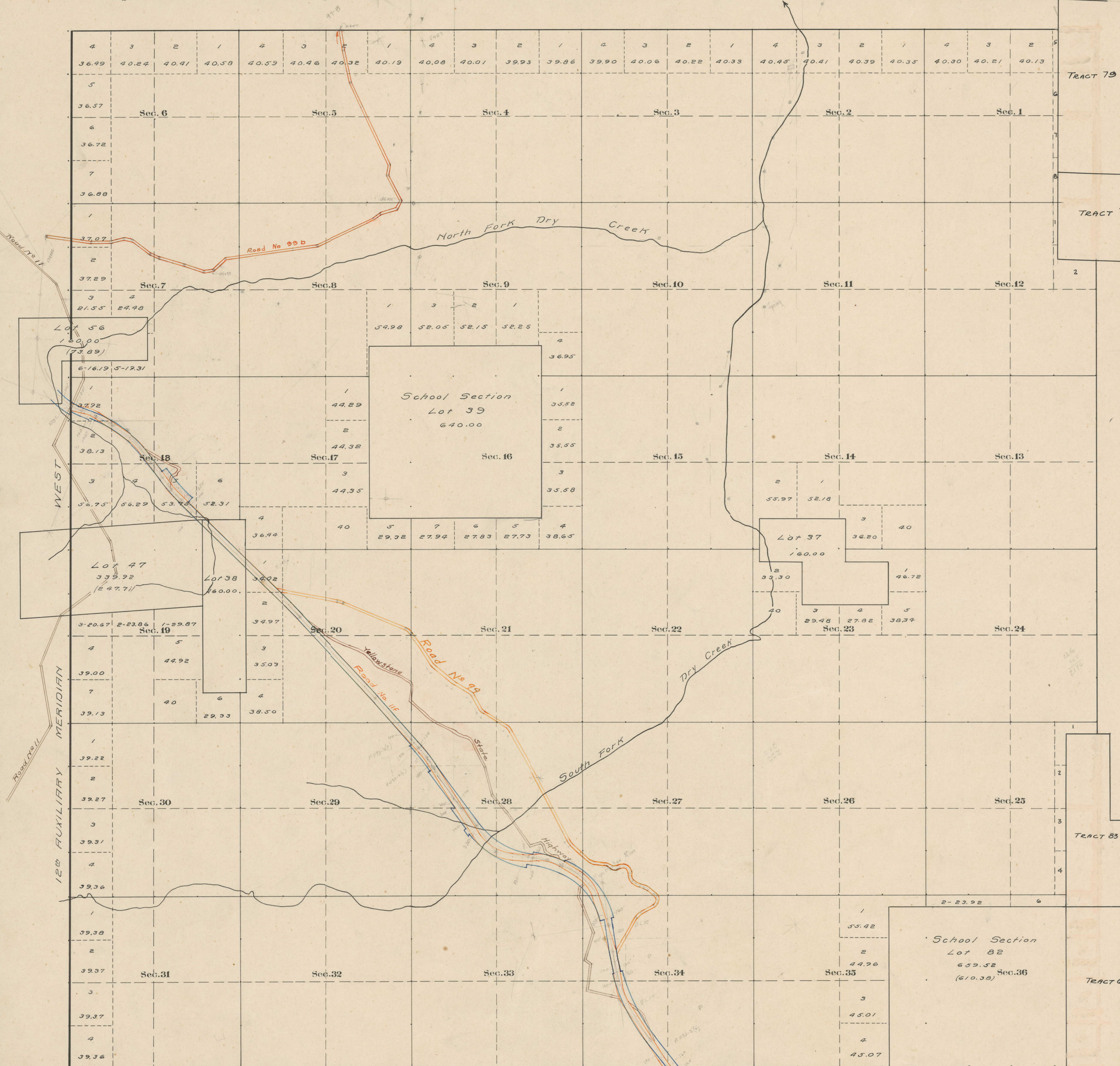


County Roads in Township No 50 North Range No 100 West of the 6th Principal Meridian, Big Horn County, Wyoming



RECORD OF ROADS										VACATION		
ROAD NO.	JOURNAL NO.	PAGE	WHEN PETITIONED	WHEN ALLOWED	ORIGINAL RETURN ON FILE	REMARKS	JOURNAL NO.	PAGE	DATE			
117	1	237	Sept 4-01	Dec 30-02	Yes	State Highway						
99b	2	232	May 5-10	July 9-10	Yes	State Highway						
	3	433	11/8/1924	1/3/1925	Yes	State Highway						
	4	441	11/2/23	1/3/24	Yes	State Highway						

Surveyed + Resurvey Tp. Lines, Aug.-05.
 " Subdivisions, Sep.-Oct.-05.
 Connections, " " "
 Private Land Claims, Sep., 05.

Scale 20 Chains to an inch
 The above Map of County roads in Township No. 50 North of Range No. 100 West of the 6th Principal Meridian, is strictly conformable to the field notes of the surveys on file in this office which have been examined and approved.
 County Surveyors Office
 Basin, Wyoming, Sept. 25, 1911.
 Clyde W. Atchey,
 County Surveyor.

Latitude 44° 15' N.
 Longitude 108° 56' W.
 Mag. Decl. 18° 05' E.