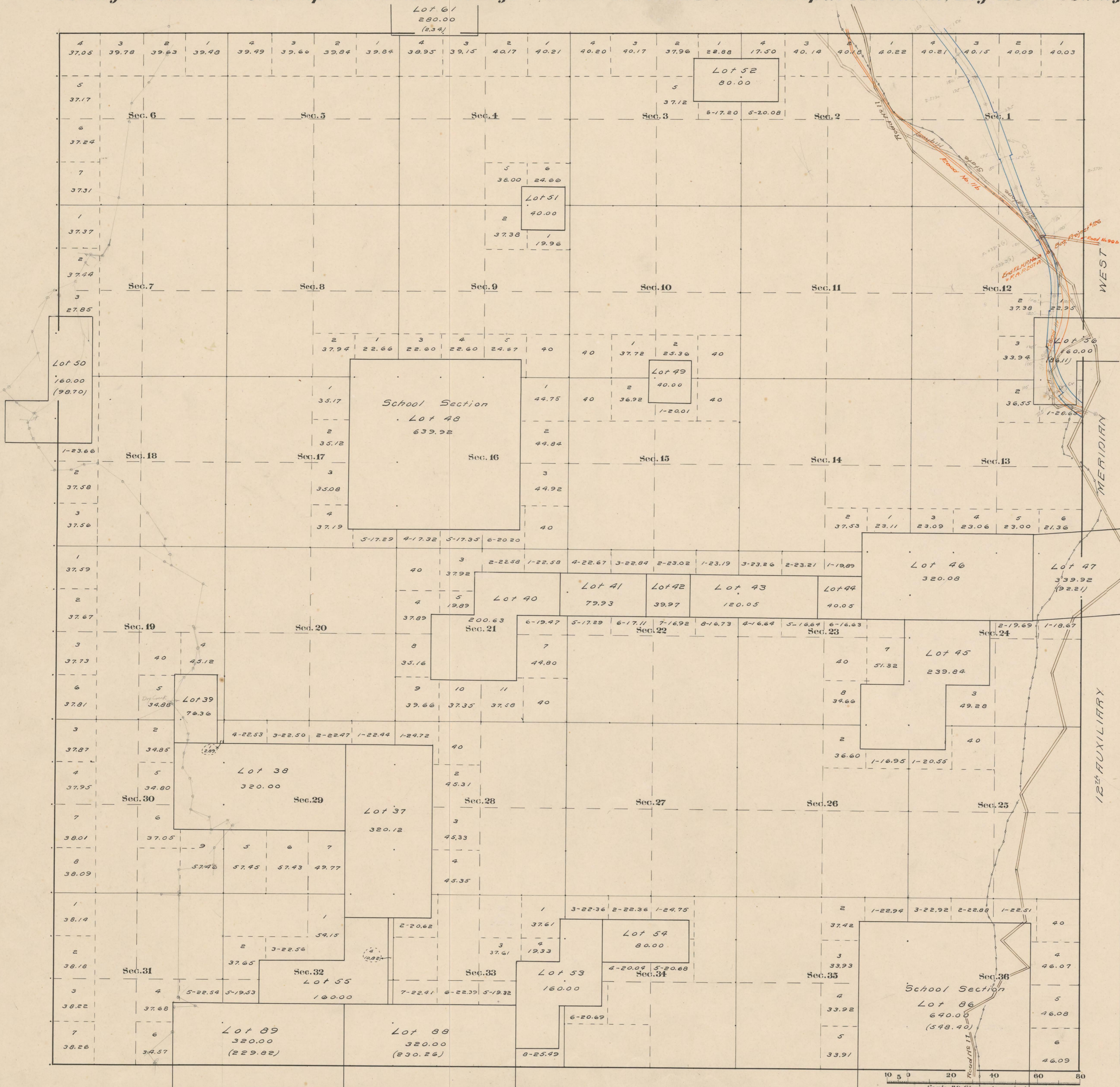


County Roads in Township No 50 North Range No 101 West of the 6th Principal Meridian, Big Horn County, Wyoming



RECORD OF ROADS										VACATION		
ROAD NO.	TOWNSHIP	PAGE	WHEN	PETITIONED	WHEN	ALLOWED	DISPOSITION	FILE	REMARKS	JOURNAL NO.	PAGE	DATE
11	1	237	Sept. 4, 01	Dec. 30, 02	—	With	REMARKS					
116	3	166	12/2/00	1/6/01	1/6/01	100	FILED					
117	3	435	11/21/01	1/1/02	1/1/02	100	FILED					
118	4	447	11/2/01	1/5/02	1/5/02	100	FILED					

Latitude 44° 15' N.  
Longitude 109° 3' W.  
Mag. Decl. 18° 00' E.

Surveyed + Resurvey Tp. Lines, Aug., -05.  
" Subdivisions, Oct., -05.  
Connections, Oct., -05.  
Private Land Claims, Sep.-Oct., 05.

The above Map of County roads in Township No. 50 North of Range No. 101 West of the 6th Principal Meridian, is strictly conformable to the field notes of the surveys on file in this office which have been examined and approved.  
County Surveyors Office  
Basin, Wyoming, Sept. 27, 1911.  
Cliff W. Atchley, County Surveyor.