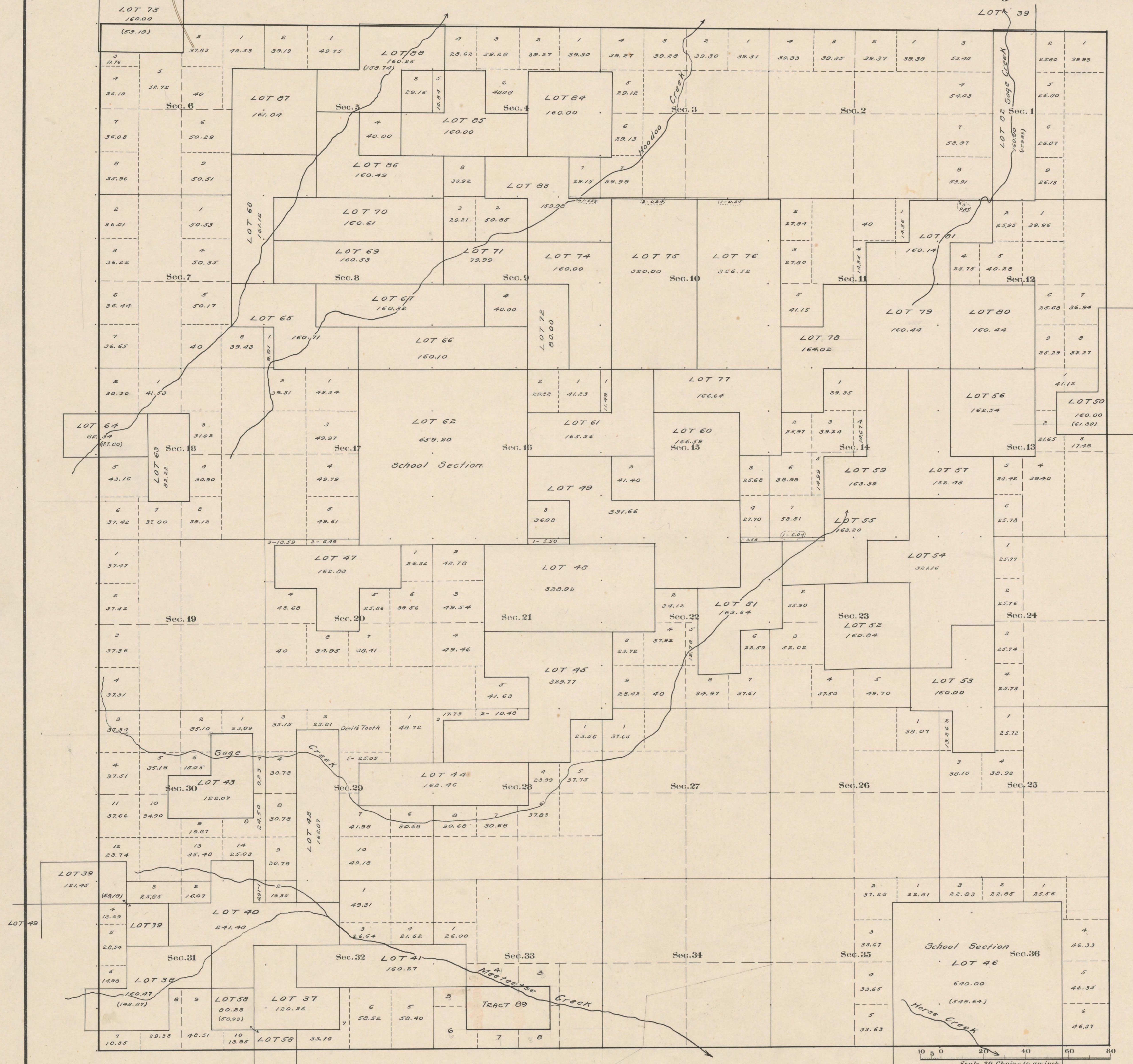


From this point "thence in a S. E. Course  
to the top of Sage Creek divide."

# County Roads in Township N<sup>o</sup> 50 North Range N<sup>o</sup> 102 West of the 6<sup>th</sup> Principal Meridian, Big Horn County, Wyoming



RECORD OF ROADS										VACATION		
ROAD No.	JOURNAL No.	PAGE	WHEN PETITIONED	WHEN ALLOWED	WHEN PETITION FILED	WHEN FILED ON FILE	REMARKS	JOURNAL No.	PAGE	DATE		
48	1	348	Sept 2-22	Oct 8-02	Yes	-						

Surveyed Resurvey N, W, and S. Township lines Oct. 14, 1905<sup>to</sup> May 23, 1906.  
Subdivisions July 17 - Aug. 1, 1906.  
Connections " " " " " " " "  
Segregated Lots June 17 - July 14, 1906.  
East Boundary Aug. 13-14, 1905.

The above Map of County roads in Township N<sup>o</sup> 50 North of Range N<sup>o</sup> 102 West of the 6<sup>th</sup> Principal Meridian, is strictly conformable to the field notes of the surveys on file in this office which have been examined and approved.  
County Surveyors Office  
Basin, Wyoming, Sept. 19, 1911.

Latitude 44° 15' N.  
Longitude 102° 03' W.  
Mag. Decl. 18° 18' E.

C. J. W. Atchley  
County Surveyor.