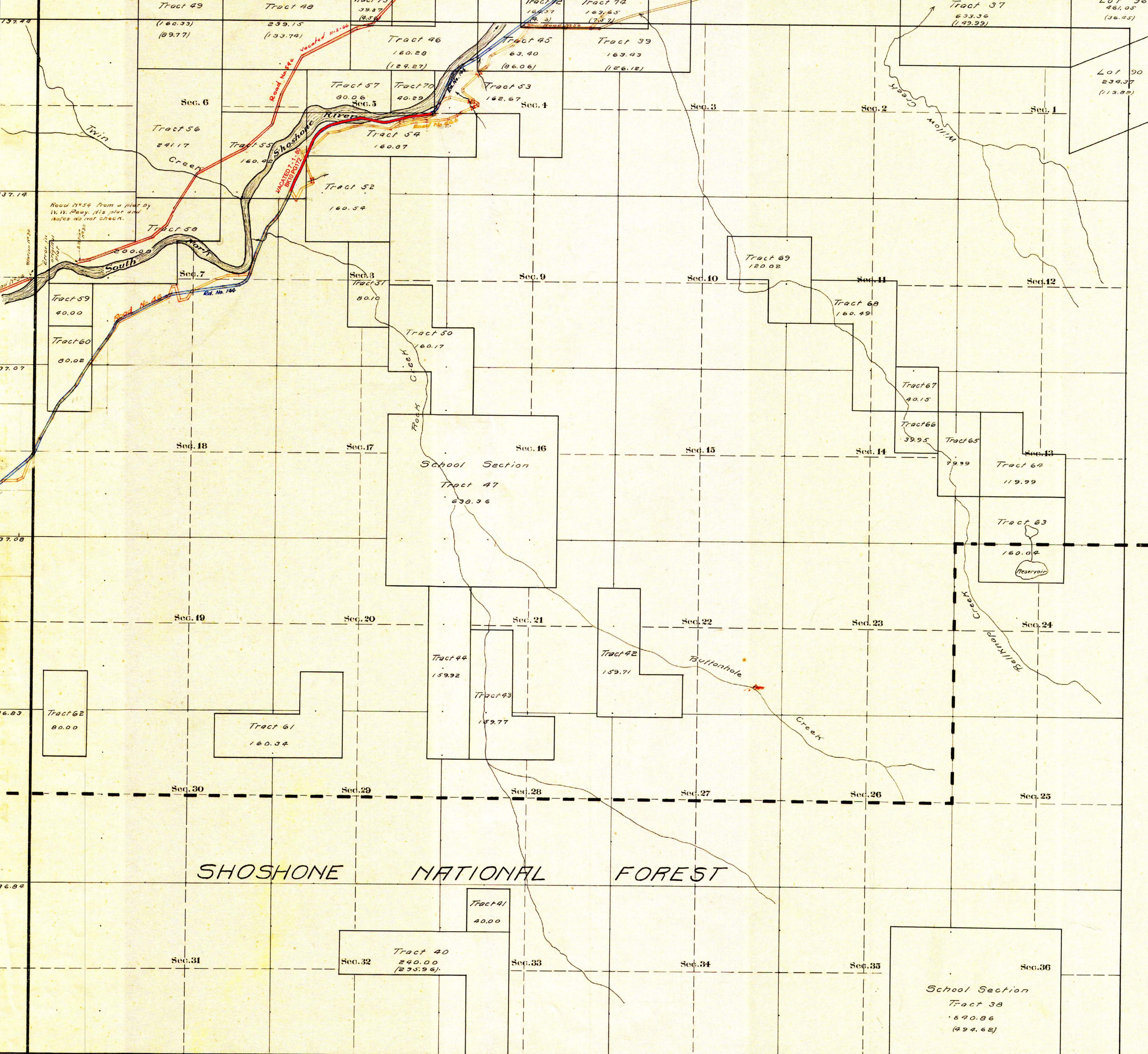


County Roads in Township No. 50 North Range No. 104 West of the 6th Principal Meridian, Big Horn County, Wyoming

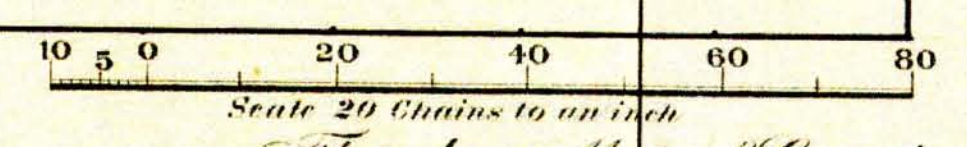


RECORD OF ROADS										VACATION	
ROAD NO.	JOURNAL #	PAGE	WHEN	PETITIONED	WHEN	ALLOWED	ORIGINAL PETITION ON FILE	FILED	MEMORANDUM	JOURNAL #	DATE
46	1	208	Feb. 5, 02	Mar. 4, 02	-	-	-	-	(See Section 16)		
54	2	180	July 9, 08	July 9, 08	Yes	Yes	-	-	(See Section 16)		
56	1	419	" 7, 03	Dec. 9, 04	Yes	-	-	-	(See Section 16)		
166				July 30, 1908					(See Section 16)		
56	9	266	4/4/07	6/7/07					VACATED	7	927 Nov. 2-1906
46	8	58		8/5/09					R.O.W.	10	172 7/01/80

SHOSHONE NATIONAL FOREST

**CERTIFICATE OF SURVEYOR**  
 I, PAUL R. CAMPBELL OF CODY, WYOMING, BEING A REGISTERED LAND SURVEYOR IN THE STATE OF WYOMING, HEREBY CERTIFY THAT THIS PLAN WAS UPDATED BY ME AND UNDER MY SUPERVISION BASED ON RESEARCH OF PARK COUNTY COMMISSIONERS DATED FROM 1860 TO 2007. FIELD SURVEYS WERE NOT PERFORMED BY ME AND THE PLATS ARE ACCURATE TO THE BEST OF MY KNOWLEDGE.  
 PAUL R. CAMPBELL  
 WYOMING REGISTRATION NO. 2571 LS

Surveyed by Brunt and Vance, 1906.



The above Map of County roads in Township No. 50 North of Range No. 104 West of the 6th Principal Meridian, is strictly conformable to the field notes of the surveys on file in this office which have been examined and approved.  
 County Surveyors Office  
 Basin, Wyoming, Sept. 23, 1911.  
 Alfred W. Atchley, County Surveyor.