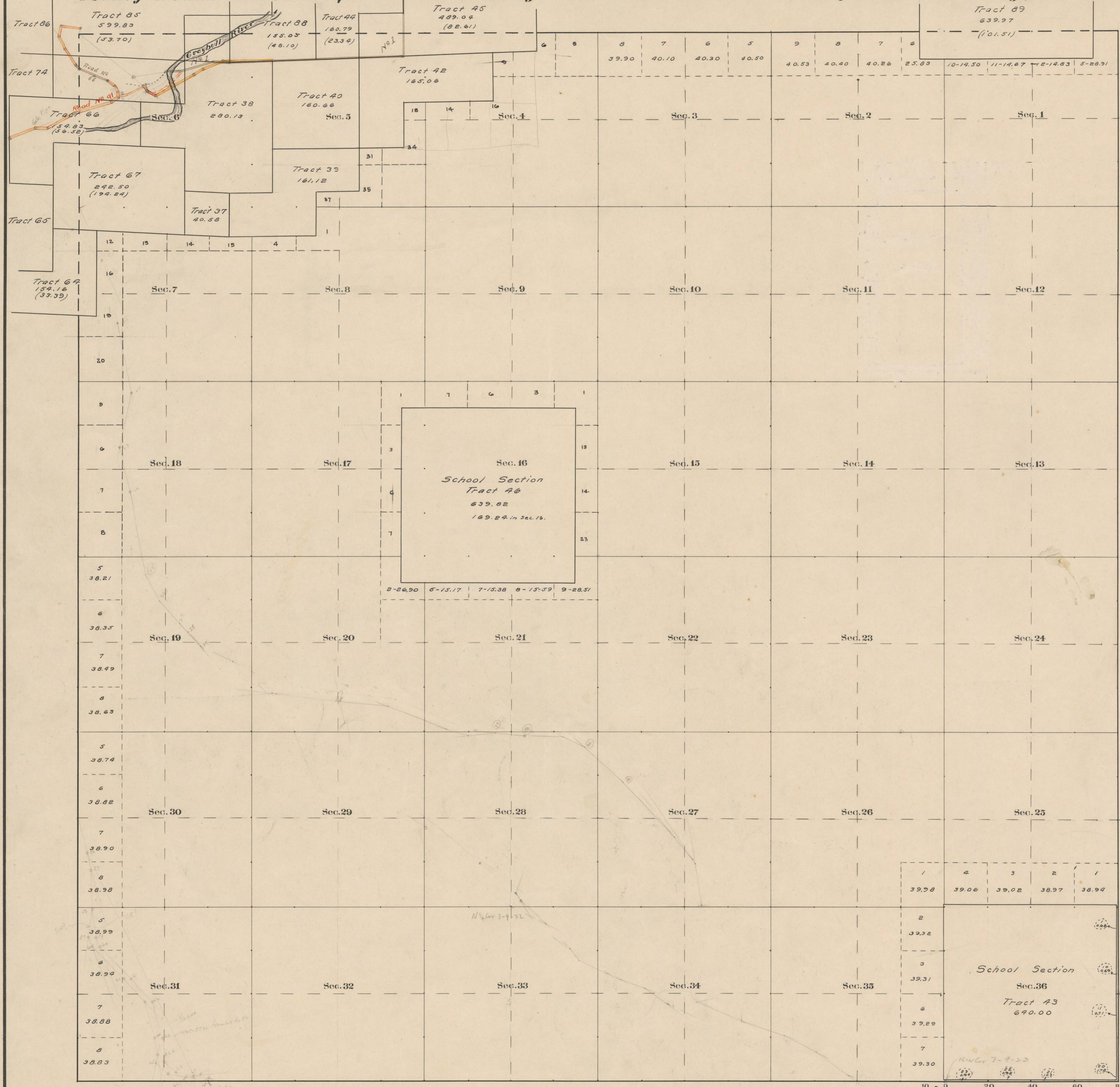


County Roads in Township No 50 North Range No 98 West of the 6th Principal Meridian, Big Horn County, Wyoming



RECORD OF ROADS										VACATION	
ROAD NO.	QUARTER NO.	FILE	WHEN PETITIONED	WHEN ALLOWED	ORIGINAL FILE	PLAT	FILE	ROAD NO.	FILE	DATE	
1	1	318	Nov. 4, 1908	Dec. 9, 1908	Yes	110					
66	1	171	Feb. 12, 1918	Dec. 31, 1918	Yes	60'					
91	2	171	9/19/1918	2/6/1919	Yes	60'					

Surveyed + Tp. Lines Resurvey, Sep. 10-Oct 2, 1906.
 Subdivisions, 1906.
 Connections, 1906.
 Segregated Tracts, 1907.
 East Boundary, 1906.

The above Map of County roads in Township No. 50 North of Range No. 98 West of the 6th Principal Meridian, is strictly conformable to the field notes of the surveys on file in this office which have been examined and approved.
 County Surveyors Office
 Basin, Wyoming, Sept. 5, 1911.

Clyde W. Atterly,
 County Surveyor.

Latitude 42° 15' N.
 Longitude 108° 32' W.
 Mean Mag. Decl. 17° 36' E.