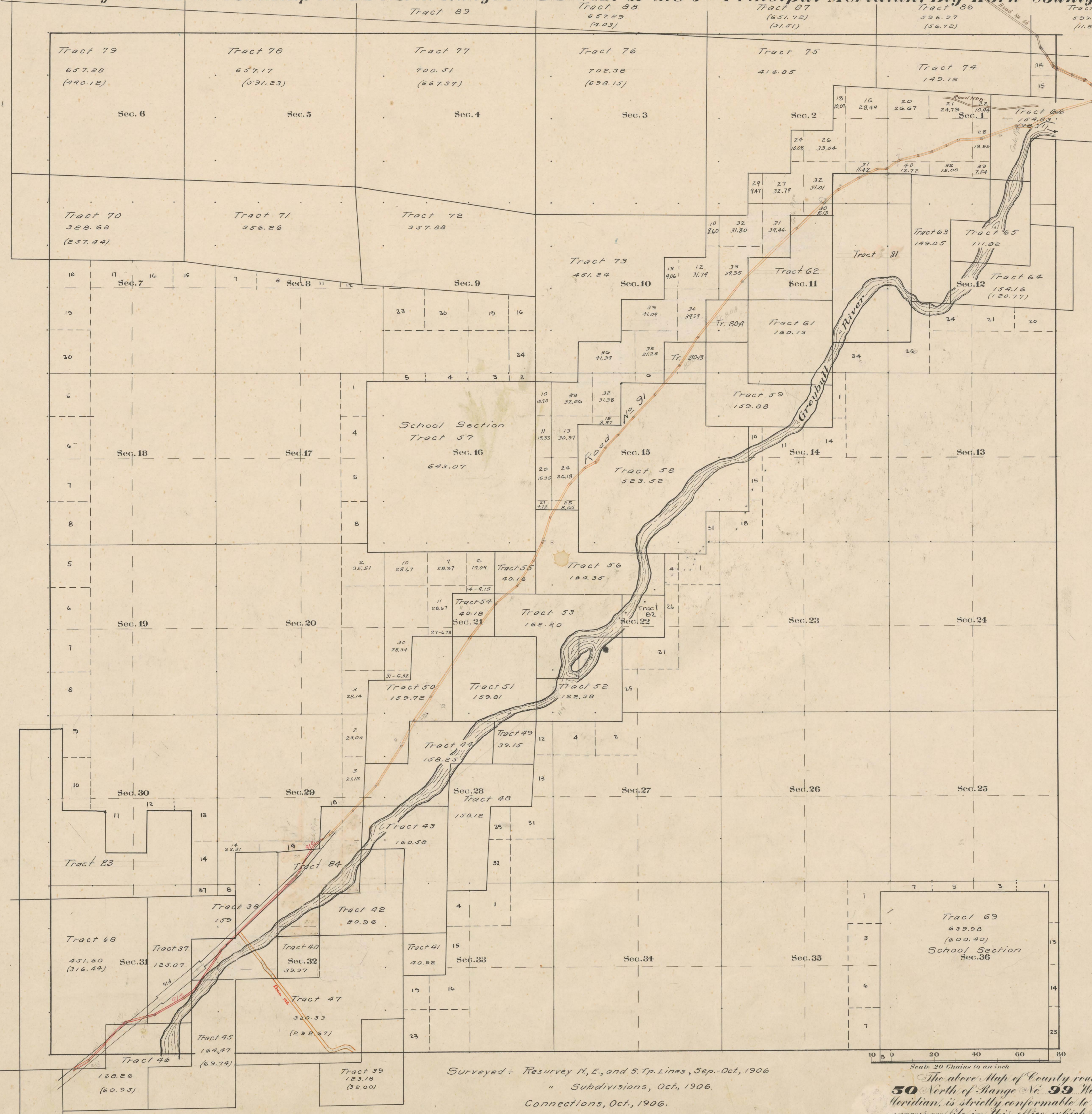


# County Roads in Township N<sup>o</sup> 50 North Range N<sup>o</sup> 99 West of the 6<sup>th</sup> Principal Meridian, Big Horn County, Wyoming



RECORD OF ROADS										VACATION	
ROAD NO.	FOUNDED BY	DATE	WHEN PETITIONED	WHEN ALLOWED	ORIGINAL PET. FILED	WHEN FILED	REMARKS	JOURNAL PAGE	DATE	JOURNAL PAGE	DATE
8	2	120	Feb. 4 - 08	-	Yes	-	Improved by the State				
66	1	708	Feb - 12	Dec 31 - 12	yes	with Section					
91	2	171	9/9/18	3/5/1919	✓	60'	Meeteetse - Burlington Road				
91	7	566	8/6/18	3/6/18	yes	60'	Meeteetse - Burlington Road				
91	9	235	Element	5/4/17		60'	Meeteetse - Burlington Road	7	579	5/7/18	

Latitude 44° 15' N.  
Longitude 108° 41' W.  
Mean Mag. Decl. 17° 53' E.

Surveyed + Resurvey N. E. and S. Tp. Lines, Sep.-Oct., 1906  
" Subdivisions, Oct., 1906.  
Connections, Oct., 1906.  
Segregated Tracts, April-May, 1907.  
Resurvey W. Bdry., Aug., 1905

Scale 20 Chains to an inch  
The above Map of County roads in Township N<sup>o</sup> 50 North of Range N<sup>o</sup> 99 West of the 6<sup>th</sup> Principal Meridian, is strictly conformable to the field notes of the surveys on file in this office which have been examined and approved.  
County Surveyors Office  
Basin, Wyoming, Sept. 8, 1911

Clyde W. Athey  
County Surveyor.