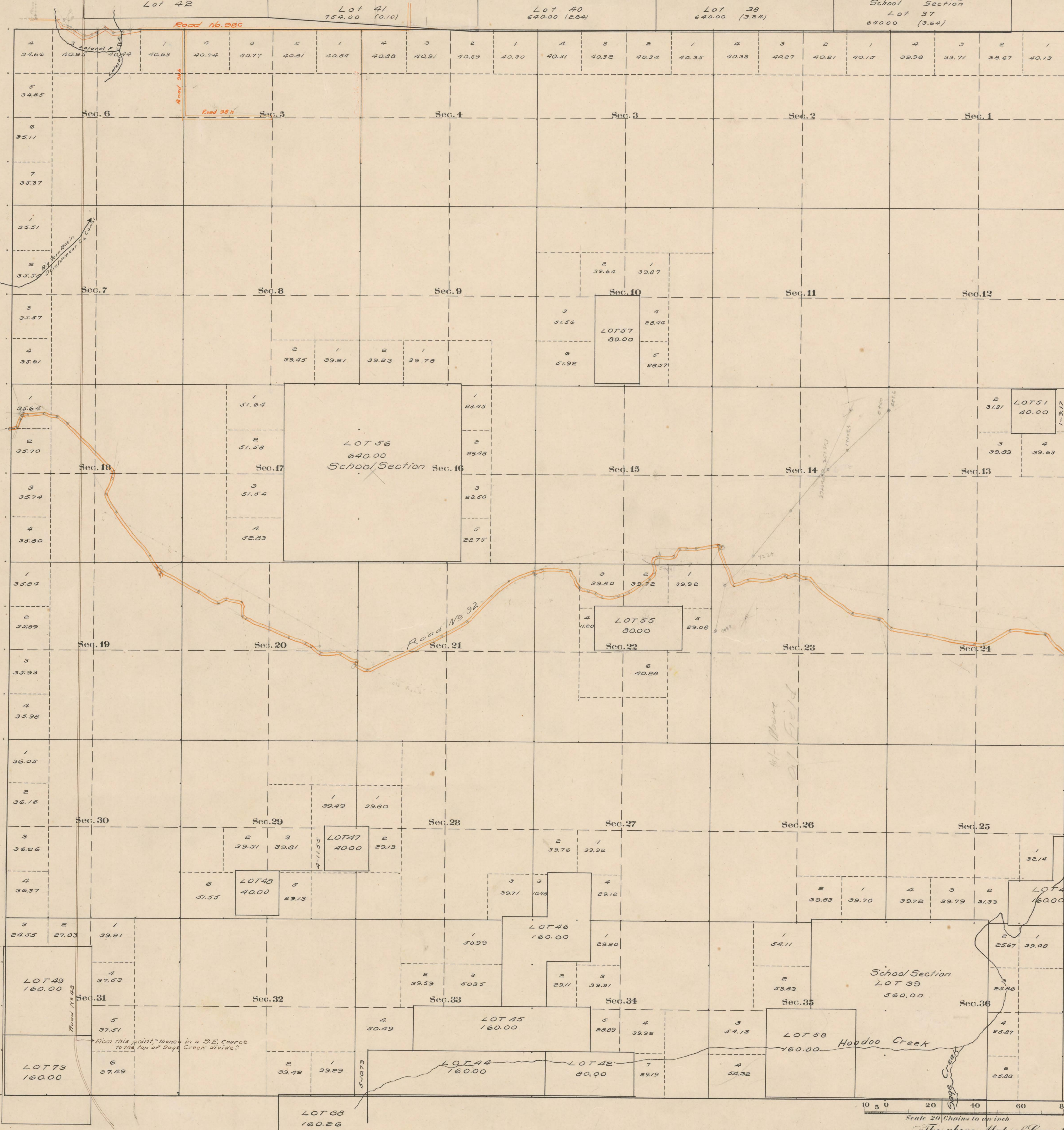


County Roads in Township No 51 North Range No 102 West of the 6th Principal Meridian, Big Horn County, Wyoming



Index to Segregated Lots

Lot No.	T.	R.	Sec.	Original Survey	Entry No.	Entry Date
37	52	102	36	All	29	Wyoming
38	"	"	35	"	"	"
39	51	"	36	N. 1/2, S. E. 1/4, E. 2 S. W. 1/4	C.E.	"
40	52	"	34	All	34	Wyoming
41	"	"	33	"	"	"
42	51	"	32	S. 2 S. E. 1/4	D.E. 539	Winford L. Watkins
43	"	101	30	Lot 4 8 S. 2 S. W. 1/4 & N. E. 1/4 S. W. 1/4	N.E. 303	Winford L. Watkins
44	"	102	34	S. 2 S. W. 1/4	D.E. 537	Ellis D. Watkins
45	"	"	33	S. 2 S. E. 1/4	"	"
46	"	"	32	N. 1/2 S. W. 1/4, N. W. 1/4 S. E. 1/4	N.E. 1034	Morris H. Hiltner
47	"	"	33	N. E. 1/4 S. E. 1/4	"	"
48	"	"	27	S. W. 1/4 S. E. 1/4	D.E. 578	"
49	"	"	28	N. E. 1/4 S. W. 1/4	KRS.	W. Dean Hays
50	"	"	29	S. E. 1/4 S. E. 1/4	"	"
51	"	"	31	S. 2 N. E. 1/4, N. 2 S. E. 1/4	N.E. 1338	Elmer D. Carter
52	"	101	10	N. W. 1/4 N. W. 1/4	KRS.	W. Dean Hays
53	"	102	23	S. W. 1/4 N. W. 1/4	"	"
54	"	"	22	S. E. 1/4 N. E. 1/4	"	"
55	"	"	16	All	S.S.	Wyoming
56	"	"	10	E. 2 S. E. 1/4	KRS.	W. Dean Hays
57	"	"	36	W. 2 S. W. 1/4	C.E.	"
58	"	"	35	E. 2 S. E. 1/4	C.E.	"
59	"	"	31	S. 2 S. E. 1/4	D.E. 893	Elmer D. Carter
60	"	"	6	Lot 1 & 2	"	"
61	"	"	1	Lot 1 & 2 S. E. 1/4 N. E. 1/4 & 3 E. 1/4 S. E. 1/4	N.E. 502	Flax W. Johnson
62	"	"	4	Lots 3 & 4, S. W. 1/4 N. W. 1/4	D.E. 422	Robert S. Eckard
63	"	"	5	S. E. 1/4 N. E. 1/4	"	"

RECORD OF ROADS

ROAD NO.	TOWNSHIP	RANGE	SECTION	DATE	BY WHOM	APPROVED	ORIGINAL PETITION ON FILE	REMARKS	DATE
48	1	342	342	1898	Sept. 5, 1898	Oct. 6, 1898	Yes	From the records of the Surveyor's Office, Big Horn County, Wyo.	
78c	2	451	451	1891	6/8/91	10/9/92	✓	Width 60 feet	
92	101	101	101	1897	4/17/97	11/7/17	✓	Carpet 74	
98h	5	69	69	1898	1/1/98	1/5/98	✓	Section 60	

Latitude 44° 20' N.
Longitude 109° 3' W.
Mag. Decl. 18° 18' E.

Surveyed + Resurvey M.S. & W. Tp. lines, May 21-28, 1906.
" Subdivisions, Aug. 13-27, "
Connections " " " "
Segregated Lots " A-12 " "
East Boundary Oct. 15, 1905.

The above Map of County roads in Township No. 51 North of Range No. 102 West of the 6th Principal Meridian, is strictly conformable to the field notes of the surveys on file in this office which have been examined and approved.
County Surveyors Office
Basin, Wyoming, Sept. 19, 1911.
Edgde W. Atchley
County Surveyor.