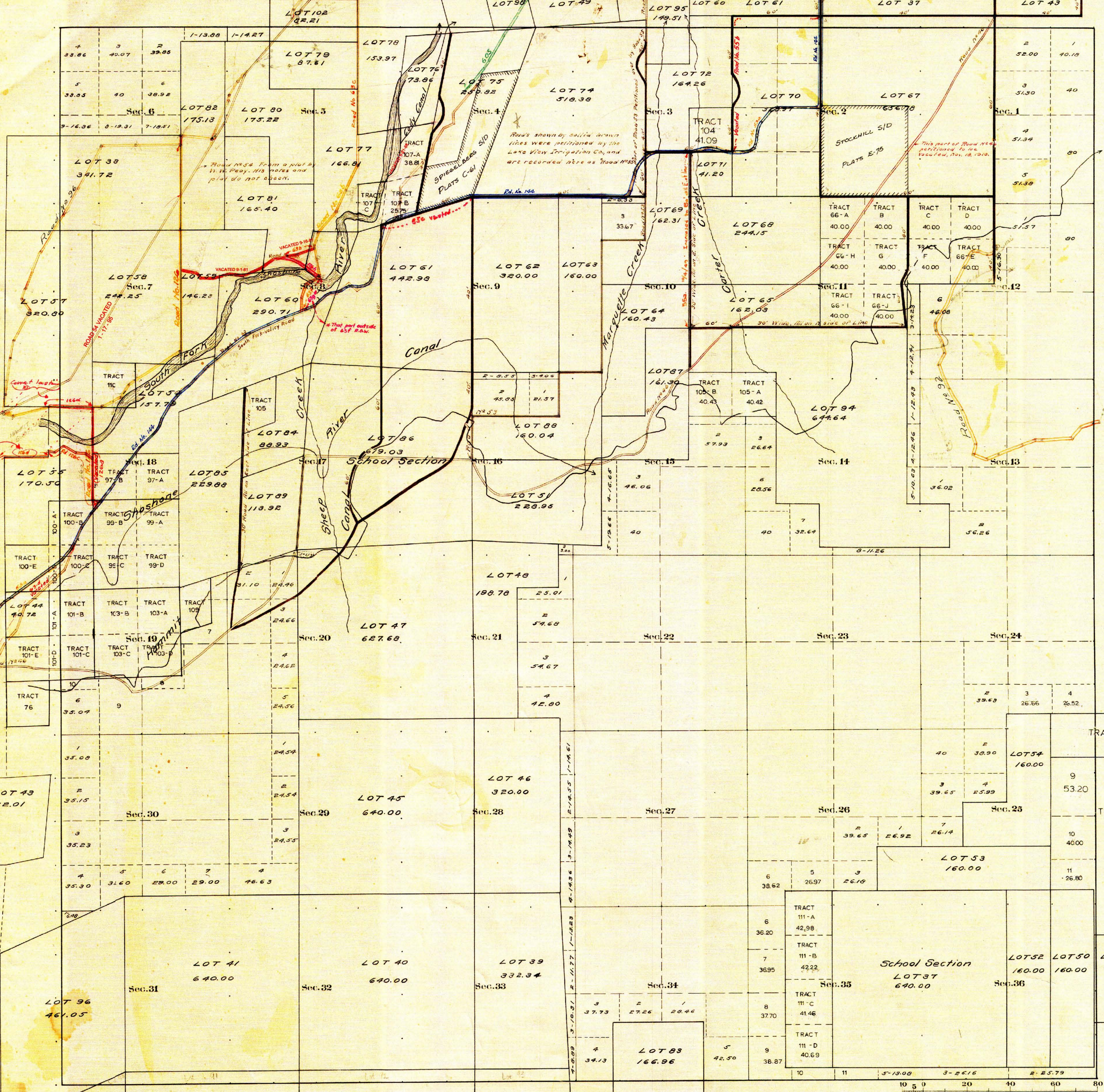


County Roads in Township No. 51 North Range No. 103 West of the 6th Principal Meridian, Big Horn County, Wyoming



RECORD OF ROAD										VACATION		
ROAD NO.	JOURNAL No.	PAGE	WHEN PETITIONED	WHEN ALLOWED	ORIGINAL PATT. FILED	PLAT ON FILE	REMARKS	JOURNAL No.	PAGE	DATE		
40	1	506	Feb. 5, 02	Mar. 9, 02	Yes	Yes	See plat on file	2	435	10/10/02		
53	1	331	Aug. 5, 02	Oct. 8, 02	Yes	Yes	See plat on file	17	471	1/17/05		
54	2	180	July 9, 08	July 9, 08	Yes	Yes	See plat on file					
55	2	433	Nov. 18, 10	Dec. 28, 10	Yes	Yes	See plat on file					
63	1	38	11/1/11	11/1/11	Yes	Yes	See plat on file					
92	2	101	3/4/1911	4/1/1911	Yes	Yes	See plat on file					
96	2	137	3/4/1911	4/1/1911	Yes	Yes	See plat on file					
93a	3	129	3/6/1909	4/1/1909	Yes	Yes	See plat on file					
120	3	287	9/2/1906	9/10/1906	Yes	Yes	See plat on file					
126	4	187	1/7/1909	2/6/1909	Yes	Yes	See plat on file					
126c	4	348	2/4/12	3/1/12	Yes	Yes	See plat on file					
126d	4	348	2/4/12	3/1/12	Yes	Yes	See plat on file					
63d	5	102	10/6/105	10/6/105	Yes	Yes	See plat on file					
55a	5	102	10/6/105	10/6/105	Yes	Yes	See plat on file					
100c	9	213	6/21/10	7/1/10	Yes	Yes	See plat on file					
100d	9	300	8/3/10	8/1/10	Yes	Yes	See plat on file					
114	9	306	4/1/17	6/1/17	Yes	Yes	See plat on file					
63f	9	454	9/1/18	12/1/18	Yes	Yes	See plat on file					
63g	9	477	12-27-18	2-21-19	Yes	Yes	See plat on file					
63h	9	477	12-27-18	2-21-19	Yes	Yes	See plat on file					
63i	9	477	12-27-18	2-21-19	Yes	Yes	See plat on file					
62S	10	431	10/15/14	7/30/14	Yes	Yes	See plat on file					

Surveyed Resurveyed Tp. Lines Aug. 21-30, 1905.
 Subdivisions May. 12-23, 1906
 Connections
 Segregated Lots Apr. 19-May 10
 Meanders May 25-26

CERTIFICATE OF SURVEYOR
 I, PAUL R. CAMPBELL OF CODY, WYOMING, BEING A REGISTERED LAND SURVEYOR IN THE STATE OF WYOMING, HEREBY CERTIFY THAT THIS PLAT WAS PREPARED BY ME AND UNDER MY SUPERVISION BASED ON RESEARCH OF PARK COUNTY COMMISSIONERS' PLATS DATED FROM 1860 TO 2007. FIELD SURVEYS WERE NOT PERSONALLY MADE, AND THE PLATS ARE ACCURATE TO THE BEST OF MY KNOWLEDGE.

The above map of County roads in Township No. 51 North of Range No. 103 West of the 6th Principal Meridian, is strictly conformable to the field notes of the surveys on file in this office which have been examined and approved.
 County Surveyors Office
 Basin, Wyoming, Sept. 28, 1911.
 Clyde W. Atchley, County Surveyor.

Latitude 44° 20' N.
 Longitude 109° 10' W.
 Mdg. Decl. 18° 20' E.