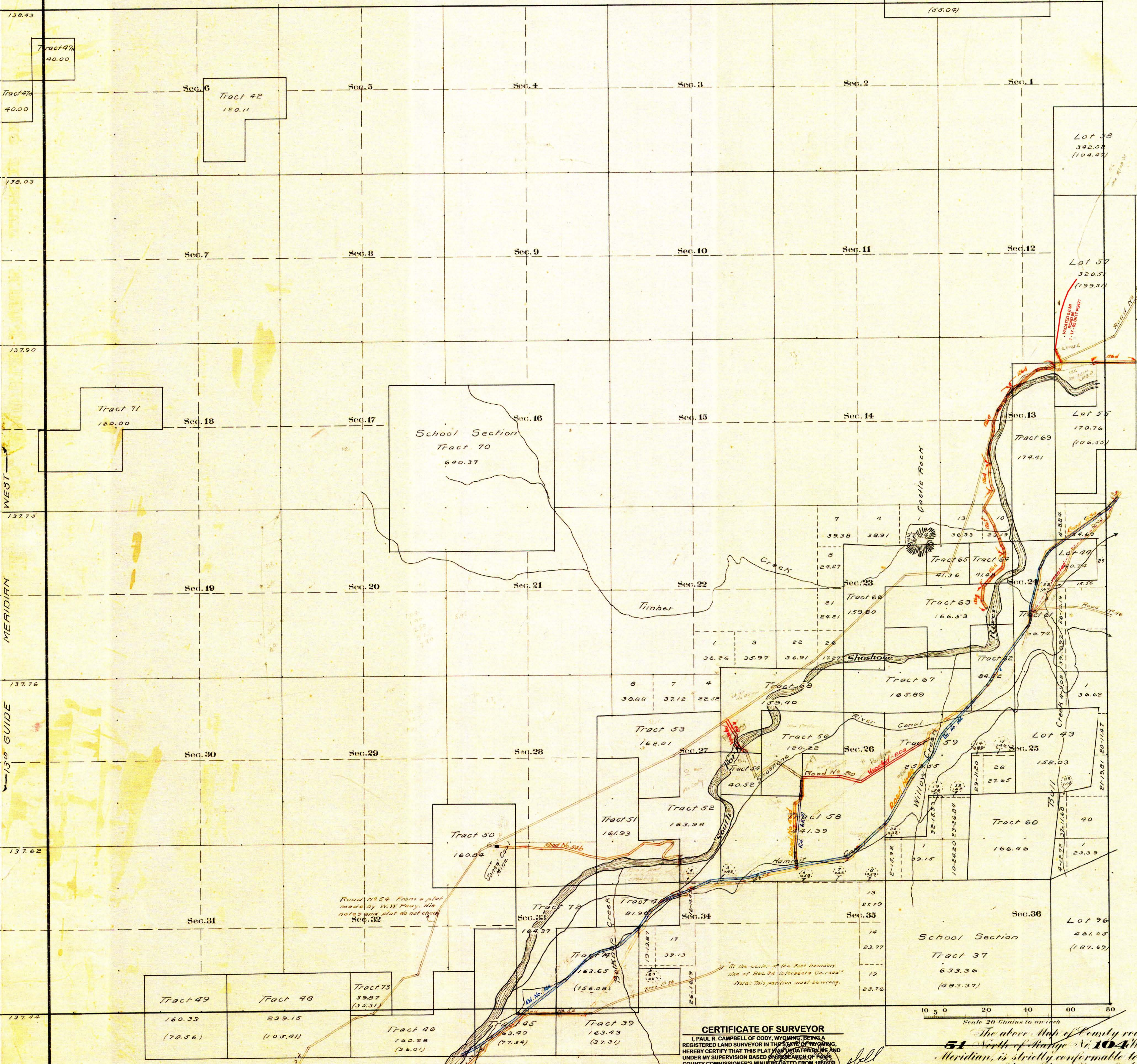


County Roads in Township N^o 51 North Range N^o 104 West of the 6th Principal Meridian, Big Horn County, Wyoming

Tract 40
640.00
(55.09)



| RECORD OF ROADS | | | | | | | | | | VACATION | | |
|-----------------|------------|------|-----------------|--------------|---------------------------|---------|---|------------|------|----------|--|--|
| ROAD NO | JOURNAL NO | PAGE | WHEN PETITIONED | WHEN ALLOWED | ORIGINAL PETITION ON FILE | ON FILE | REMARKS | JOURNAL NO | PAGE | DATE | | |
| 46 | 1 | 286 | Feb 5-02 | Mar 4-02 | | | | | | | | |
| 54 | 2 | 180 | July 9-08 | July 9-08 | Yes | | Survey for 1/2 mile from Park-Walley | | | | | |
| 55 | 1 | 419 | July 7-03 | Oct 8-04 | Yes | | Survey for 1/2 mile from Park-Walley | | | | | |
| 54b | 2 | 191 | 4/4/1917 | 5/4/1917 | ✓ | | With Survey for 1/2 mile from Park-Walley | | | | | |
| 62 | 1 | 38 | 3/2/1915 | 3/2/1915 | Yes | | Survey for 1/2 mile from Park-Walley | | | | | |
| 80 | 2 | 222 | 3/2/1915 | 3/2/1915 | Yes | | Survey for 1/2 mile from Park-Walley | | | | | |
| 63a | 3 | 189 | | 6/2/31 | | | Survey for 1/2 mile from Park-Walley | | | | | |
| 80a | | | | | | | Part vacated | | | | | |
| 66d | 4 | 140 | 3/2/1920 | | | | | | | | | |
| 126d | 7 | 300 | 9/1/77 | 9/1/77 | | | | | | | | |
| 126e | 7 | 300 | 9/1/77 | 9/1/77 | | | | | | | | |
| 126f | 7 | 302 | 9/1/77 | 9/1/77 | | | | | | | | |
| 126g | 7 | 303 | 9/1/77 | 9/1/77 | | | | | | | | |
| 126h | 7 | 266 | 4/4/67 | 6/1/77 | | | | | | | | |
| 63e | | | | | | | | | | | | |
| 63f | 11 | 481 | 7-5-88 | 10-4-88 | | | Ed. in Julian Scales | 8 | 329 | 7/6/92 | | |
| 63g | | | | | | | PORTION VACATED | 17 | 471 | 1-17-95 | | |

CERTIFICATE OF SURVEYOR

I, PAUL R. CAMPBELL OF CODY, WYOMING, BEING A REGISTERED LAND SURVEYOR IN THE STATE OF WYOMING, HEREBY CERTIFY THAT THIS PLAT WAS VACATED BY ME AND UNDER MY SUPERVISION BASED ON A SEARCH OF THE COUNTY COMMISSIONER'S MINUTES DATED FROM 1897 TO 1907. FIELD SURVEYS WERE NOT PERFORMED BY ME AND THIS PLAT IS ACCURATE TO THE BEST OF MY KNOWLEDGE.

The above Map of County roads in Township N^o 51 North of Range N^o 104 West of the 6th Principal Meridian, is strictly conformable to the field notes of the surveys on file in this office which have been examined and approved.

County Surveyors Office
Basin, Wyoming, Sept. 29, 1911.

Edw. W. Atchley
County Surveyor

Surveyed by Brunt and Vance 1907 and 1908

PAUL R. CAMPBELL
WYOMING REGISTRATION NO. 2571 LS