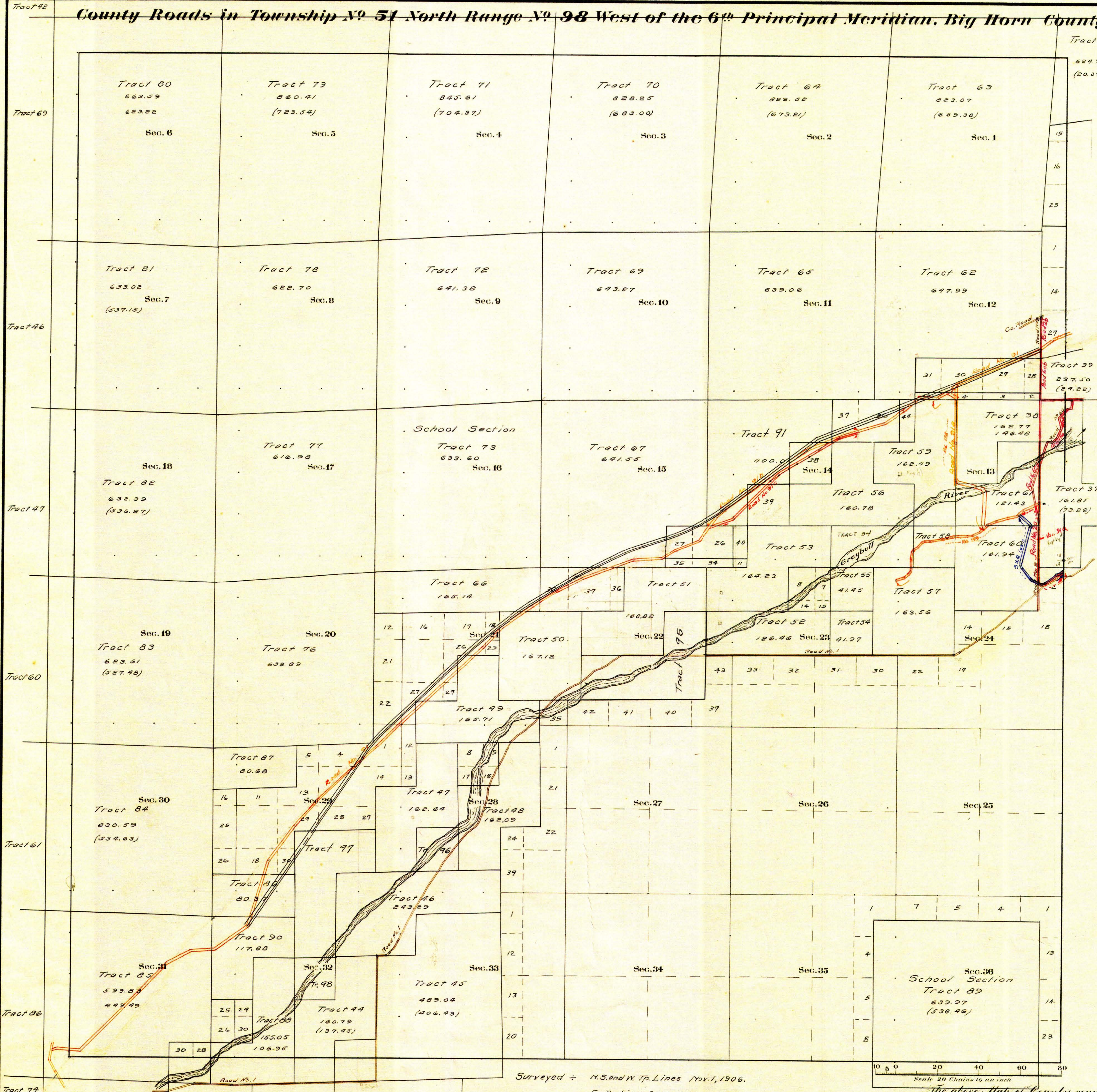


County Roads in Township No. 51 North Range No. 98 West of the 6th Principal Meridian, Big Horn County, Wyoming



RECORD OF ROADS										VACATION	
ROAD NO.	JOURNAL NO.	PAGE	WHEN RETIRED	WHEN ALLOWED	ORIGINAL RETIRED ON FILE	PLAT ON FILE	SECTION	PAGE	DATE		
1	518	104	Dec. 9, 04	Dec. 9, 04	YES	70					
2	533	104	Dec. 30, 04	Dec. 30, 04	YES	70					
60	532	104	Feb. 7, 05	Mar. 7, 05	YES	70					
91	2	171	7/9/1911	3/5/1911	✓	60					
91a	3	171	1/10/1911	1/10/1911	✓	60					
91b	3	171	1/10/1911	4/7/1911	✓	60					
91c	4	171	1/10/1911	3/6/1911	✓	60					
26			4/10/1911								
31			4/10/1911								
188	9	358	3/7/1911								
189	9	358	3/7/1911								
3XQ	11	464	11/12/1911								

Latitude 44° 20' N.  
Longitude 108° 34' W.  
Mean Mag. Decl. 18° 37' E.

Surveyed by H.S. and W. Tr. Lines Nov. 1, 1906.  
E. Tr. Line Oct. 5, 1906.  
Subdivisions Nov. 21, 1906.  
Connections " " "  
Segregated Tracts July 1, 1907.

**CERTIFICATE OF SURVEYOR**  
I, PAUL R. CAMPBELL OF CODY, WYOMING, BEING A REGISTERED LAND SURVEYOR IN THE STATE OF WYOMING, HEREBY CERTIFY THAT THIS PLAT WAS PREPARED BY ME AND UNDER MY SUPERVISION BASED ON RESEARCH OF PARK COUNTY COMMISSIONER'S MINUTES DATED FROM 1900 TO 2007. FIELD SURVEYS WERE NOT PURSUED BY ME AND THE PLATS ARE ACCURATE TO THE BEST OF MY KNOWLEDGE.  
Paul R. Campbell  
WYOMING REGISTERED LAND SURVEYOR No. 15745

The above map of County roads in Township No. 51 North of Range No. 98 West of the 6th Principal Meridian, is strictly conformable to the field notes of the surveys on file in this office which have been examined and approved.  
County Surveyors Office  
Basin, Wyoming, Sept. 5, 1911.  
Clyde W. Atchley  
County Surveyor.