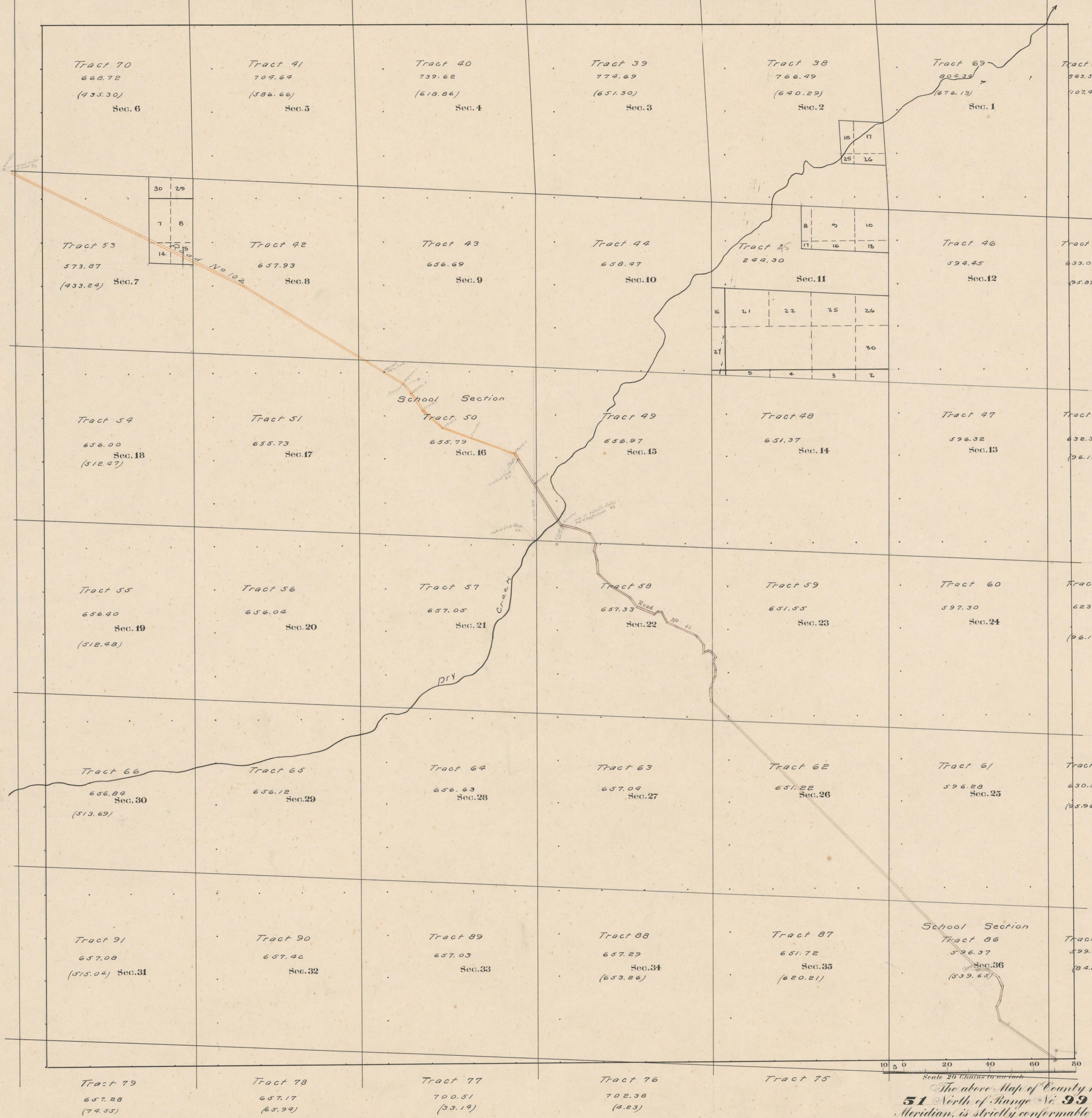


County Roads in Township No 51 North Range No 99 West of the 6th Principal Meridian, Big Horn County, Wyoming



RECORD OF ROADS										VACATION		
ROAD NO	JOURNAL TR	PAGE	WHEN RETIRED	WHEN ALLOWED	ORIGINAL PERMITS ON FILE	PLAT ON FILE	REMARKS	JOURNAL NO	PAGE	DATE		
66	101	101	Feb -12	Dec 31-12	With	Surveyed by						
102	235	235	8/1/12	8/31/12	60'	Oregon Basin						

Latitude 44° 20' N.  
Longitude 108° 41' W.  
Mean Mag. Decl. 17° 52' E.

Scale 20 Chains to an inch

Surveyed - Resurvey N.E. & S. Tp lines, Oct 3 - Nov 3, 1906.  
" Subdivisions, Nov 4 - 18, "  
Connections, " " " "  
Segregated Tracts, May 13 - 29, 1907.  
Resurvey W. Bdry. April 20, 1906.

The above Map of County roads in Township No. 51 North of Range No. 99 West of the 6th Principal Meridian, is strictly conformable to the field notes of the surveys on file in this office which have been examined and approved.  
County Surveyors Office  
Basin, Wyoming. 1911  
Howard P. Bell,  
County Surveyor.