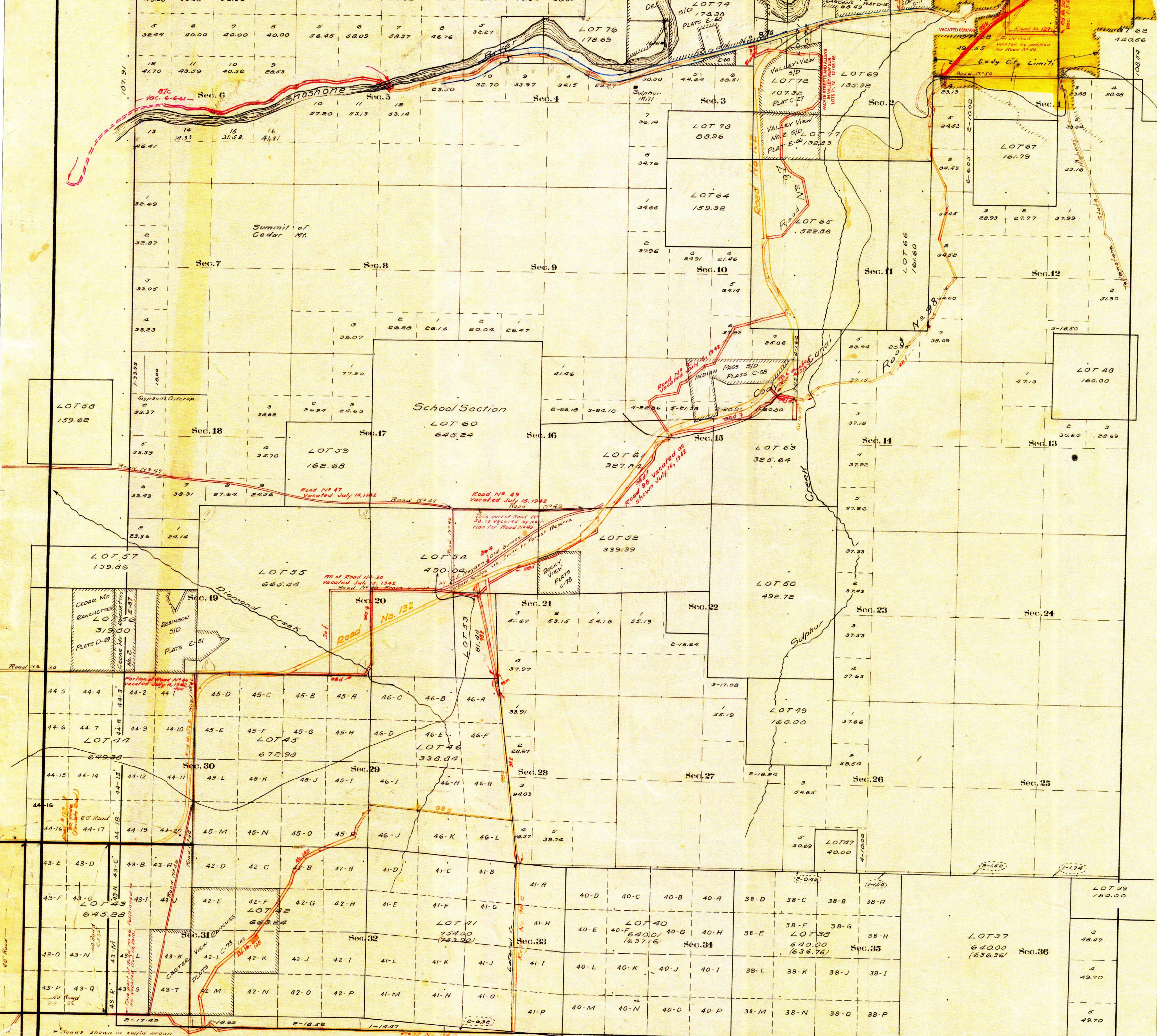


THIRTEENTH STANDARD PARALLEL NORTH

County Roads in Township No 52 North Range No 102 West of the 6th Principal Meridian, Big Horn County, Wyoming



RECORD OF ROADS										VACATION		
ROAD NO	JOURNAL NO	PAGE	WHEN PERMITTED	WHEN REOPENED	ORIGINAL PERM. FROM WHOM	FILE	REMARKS	JOURNAL NO	PAGE	DATE		
30	1	266	Nov. 5, 01	Dec. 3, 01	Yes	Yes	Section 20 to Cedar Mt. Ranch					
46	1	200	Feb. 5, 02	Mar. 4, 02	Yes	Yes	Section 20 to Cedar Mt. Ranch					
47	1	200	Feb. 5, 02	Mar. 4, 02	Yes	Yes	Section 20 to Cedar Mt. Ranch					
48	1	200	Feb. 5, 02	Mar. 4, 02	Yes	Yes	Section 20 to Cedar Mt. Ranch					
49	1	200	Feb. 5, 02	Mar. 4, 02	Yes	Yes	Section 20 to Cedar Mt. Ranch					
50	1	200	Feb. 5, 02	Mar. 4, 02	Yes	Yes	Section 20 to Cedar Mt. Ranch					
51	1	200	Feb. 5, 02	Mar. 4, 02	Yes	Yes	Section 20 to Cedar Mt. Ranch					
52	1	200	Feb. 5, 02	Mar. 4, 02	Yes	Yes	Section 20 to Cedar Mt. Ranch					
53	1	200	Feb. 5, 02	Mar. 4, 02	Yes	Yes	Section 20 to Cedar Mt. Ranch					
54	1	200	Feb. 5, 02	Mar. 4, 02	Yes	Yes	Section 20 to Cedar Mt. Ranch					
55	1	200	Feb. 5, 02	Mar. 4, 02	Yes	Yes	Section 20 to Cedar Mt. Ranch					
56	1	200	Feb. 5, 02	Mar. 4, 02	Yes	Yes	Section 20 to Cedar Mt. Ranch					
57	1	200	Feb. 5, 02	Mar. 4, 02	Yes	Yes	Section 20 to Cedar Mt. Ranch					
58	1	200	Feb. 5, 02	Mar. 4, 02	Yes	Yes	Section 20 to Cedar Mt. Ranch					
59	1	200	Feb. 5, 02	Mar. 4, 02	Yes	Yes	Section 20 to Cedar Mt. Ranch					
60	1	200	Feb. 5, 02	Mar. 4, 02	Yes	Yes	Section 20 to Cedar Mt. Ranch					

Park Co.

30	1	266	Nov. 5, 01	Dec. 3, 01	Yes	Yes	Section 20 to Cedar Mt. Ranch					
46	1	200	Feb. 5, 02	Mar. 4, 02	Yes	Yes	Section 20 to Cedar Mt. Ranch					
47	1	200	Feb. 5, 02	Mar. 4, 02	Yes	Yes	Section 20 to Cedar Mt. Ranch					
48	1	200	Feb. 5, 02	Mar. 4, 02	Yes	Yes	Section 20 to Cedar Mt. Ranch					
49	1	200	Feb. 5, 02	Mar. 4, 02	Yes	Yes	Section 20 to Cedar Mt. Ranch					
50	1	200	Feb. 5, 02	Mar. 4, 02	Yes	Yes	Section 20 to Cedar Mt. Ranch					
51	1	200	Feb. 5, 02	Mar. 4, 02	Yes	Yes	Section 20 to Cedar Mt. Ranch					
52	1	200	Feb. 5, 02	Mar. 4, 02	Yes	Yes	Section 20 to Cedar Mt. Ranch					
53	1	200	Feb. 5, 02	Mar. 4, 02	Yes	Yes	Section 20 to Cedar Mt. Ranch					
54	1	200	Feb. 5, 02	Mar. 4, 02	Yes	Yes	Section 20 to Cedar Mt. Ranch					
55	1	200	Feb. 5, 02	Mar. 4, 02	Yes	Yes	Section 20 to Cedar Mt. Ranch					
56	1	200	Feb. 5, 02	Mar. 4, 02	Yes	Yes	Section 20 to Cedar Mt. Ranch					
57	1	200	Feb. 5, 02	Mar. 4, 02	Yes	Yes	Section 20 to Cedar Mt. Ranch					
58	1	200	Feb. 5, 02	Mar. 4, 02	Yes	Yes	Section 20 to Cedar Mt. Ranch					
59	1	200	Feb. 5, 02	Mar. 4, 02	Yes	Yes	Section 20 to Cedar Mt. Ranch					
60	1	200	Feb. 5, 02	Mar. 4, 02	Yes	Yes	Section 20 to Cedar Mt. Ranch					

CERTIFICATE OF SURVEYOR

I, PAUL R. CAMPBELL OF CODY, WYOMING, BEING A REGISTERED LAND SURVEYOR IN THE STATE OF WYOMING, HEREBY CERTIFY THAT THIS PLAT WAS UPDATED BY ME AND UNDER MY SUPERVISION BASED ON RESEARCH OF PARK COUNTY COMMISSIONER'S MINUTES DATED FROM 1960 TO 2007. FIELD SURVEYS WERE NOT PERFORMED BY ME AND THE PLATS ARE ACCURATE TO THE BEST OF MY KNOWLEDGE.



Scale 20 Chains to an inch

The above Map of County roads in Township No. 52 North of Range No. 102 West of the 6th Principal Meridian, is strictly conformable to the field notes of the surveys on file in this office which have been examined and approved.
County Surveyors Office
Basin, Wyoming, Sept. 19, 1911.

Clyde W. Atchley
County Surveyor.