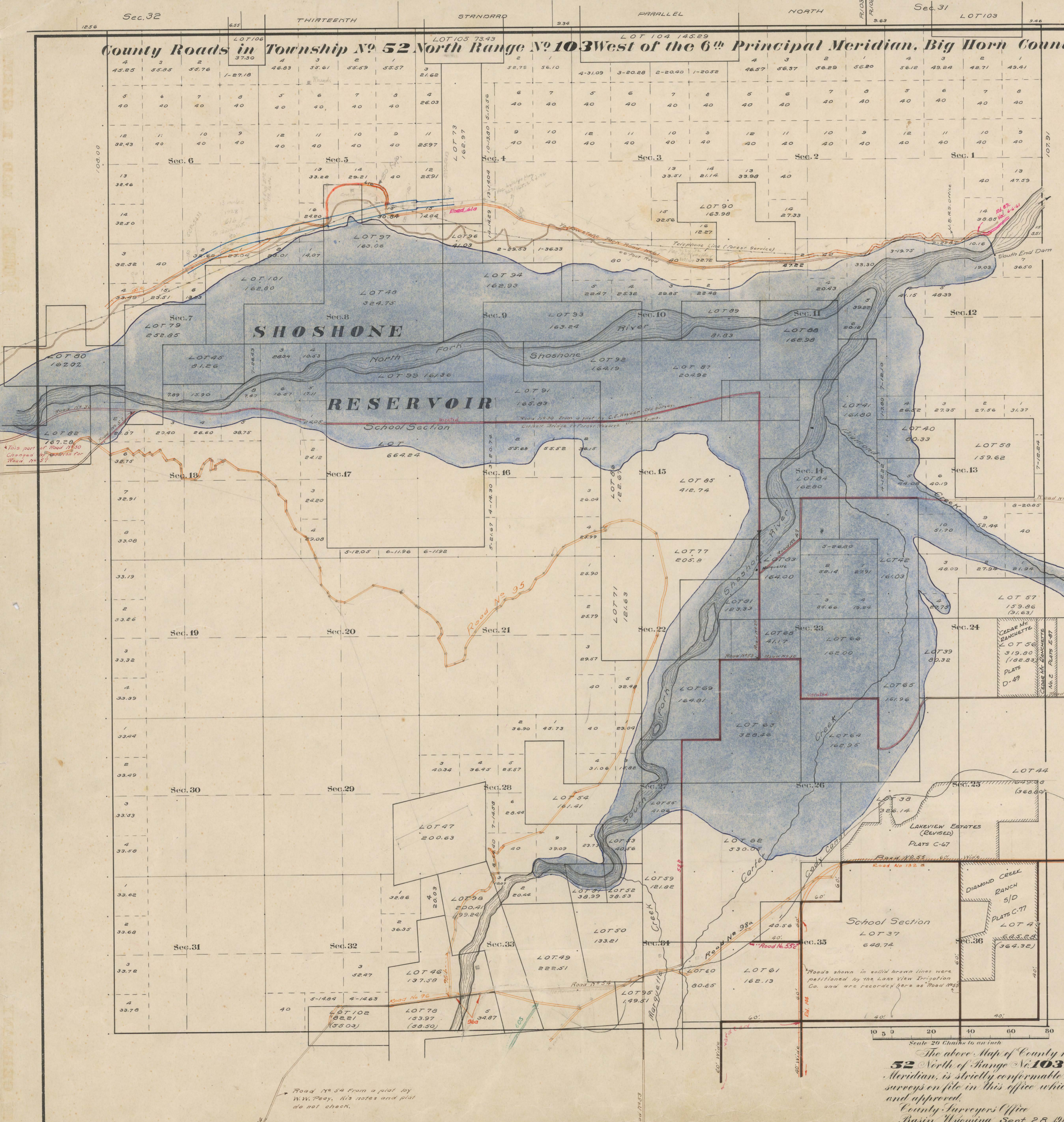


County Roads in Township No. 52 North Range No. 103 West of the 6th Principal Meridian, Big Horn County, Wyoming



RECORD OF ROADS												VACATION					
ROAD NO.	SECTION	DATE	BY WHOM	REASON	APPROVED	FILED	FILED	FILED	FILED	FILED	FILED	FILED	FILED	FILED	FILED	FILED	FILED
30	1	266	Nov. 5, 01	Dec. 3, 01	Yes	Yes	Yes	Yes	Yes	Yes	Yes	Yes	Yes	Yes	Yes	Yes	Yes
47	1	288	Feb. 5, 02	Mar. 2, 02	Yes	Yes	Yes	Yes	Yes	Yes	Yes	Yes	Yes	Yes	Yes	Yes	Yes
53	1	331	May 9, 02	Oct. 2, 02	Yes	Yes	Yes	Yes	Yes	Yes	Yes	Yes	Yes	Yes	Yes	Yes	Yes
54	2	180	July 9, 02	July 9, 02	Yes	Yes	Yes	Yes	Yes	Yes	Yes	Yes	Yes	Yes	Yes	Yes	Yes
55	2	435	Nov. 18, 10	Dec. 28, 10	Yes	Yes	Yes	Yes	Yes	Yes	Yes	Yes	Yes	Yes	Yes	Yes	Yes
57	1	396	April 2, 03	April 7, 03	Yes	Yes	Yes	Yes	Yes	Yes	Yes	Yes	Yes	Yes	Yes	Yes	Yes
61	2	547		Dec. 29, 09	Yes	Yes	Yes	Yes	Yes	Yes	Yes	Yes	Yes	Yes	Yes	Yes	Yes
54a	2	785	9/12/11	5/1/12													
95	2	135	7/3/1918	7/3/1918	✓	✓	✓	✓	✓	✓	✓	✓	✓	✓	✓	✓	✓
96	2	121	3/2/1918	9/1/1918	✓	✓	✓	✓	✓	✓	✓	✓	✓	✓	✓	✓	✓
98a	2	266	1/4/1921	1/4/1921	✓	✓	✓	✓	✓	✓	✓	✓	✓	✓	✓	✓	✓
98a	2	203	9/1/1924	12/3/1925	✓	✓	✓	✓	✓	✓	✓	✓	✓	✓	✓	✓	✓
98a	3		8/1/1935														
132	5	44	7/2/1941	8/16/1947													
53c			6/1/52														
87c			Resolution														
94	9	266	4/16/77	4/3/77													
96a	9	310	8/28/77	12/4/77													
605	10	431	11/2/75	3/30/81	✓	✓	✓	✓	✓	✓	✓	✓	✓	✓	✓	✓	✓

Latitude 44°26'N.  
Longitude 109°10'W.  
Mag. Decl. 17°20'E.

The above Map of County roads in Township No. 52 North of Range No. 103 West of the 6th Principal Meridian, is strictly conformable to the field notes of the surveys on file in this office which have been examined and approved.

County Surveyors Office  
Basin, Wyoming, Sept. 28, 1911.

Edw. W. Athely  
County Surveyor.

Road No. 54 From a plat by W.W. Peay, his notes and plat do not check.