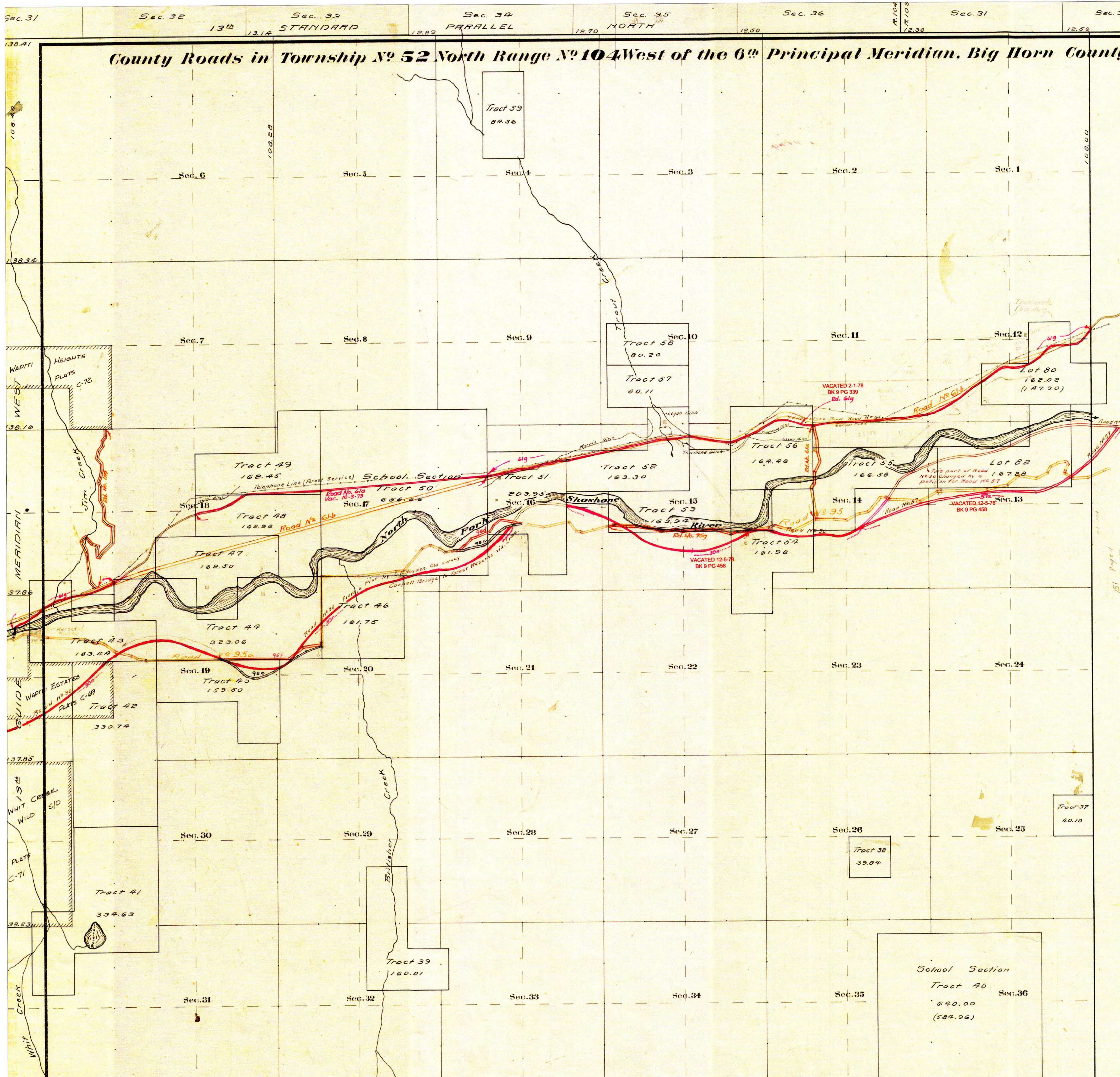


County Roads in Township No 52 North Range No 104 West of the 6th Principal Meridian, Big Horn County, Wyoming



RECORD OF ROADS										VACATION		
ROAD NO.	ORIGINAL REF.	DATE	APPROVED	BY WHOM	DATE	APPROVED	BY WHOM	DATE	REMARKS	ORIGINAL REF.	DATE	
30	266	Nov. 5, 01	Yes	Yes	Dec. 3, 01	Yes	Yes					
37	1	398	April 2, 02	April 3, 03	Yes	Yes						
61	2	187			Dec. 23, 09	Yes	Yes					
95	2	133	4/23/07	4/17/11					Width Sec. 28, 29, 30, 31, 32, 33, 34, 35, 36, 37, 38, 39, 40, 41, 42, 43, 44, 45, 46, 47, 48, 49, 50, 51, 52, 53, 54, 55, 56, 57, 58, 59, 60, 61, 62, 63, 64, 65, 66, 67, 68, 69, 70, 71, 72, 73, 74, 75, 76, 77, 78, 79, 80, 81, 82, 83, 84, 85, 86, 87, 88, 89, 90, 91, 92, 93, 94, 95, 96, 97, 98, 99, 100			
61b	2	616	11/19/21	9/6/1928								
75e	7	484	4/31/27	6/7/27	Yes	Yes						
98f												
98e	7	483	4/4/27	6/7/27	Yes	Yes						
98d												
61d	8	268	8-7-73	12-8-71						8	411	10-2-73
95g	8	555	4-8-74	6-4-76								
109	8	601	10-2-74	10-2-74								
61g												
30h												
57h												
60v	17	148	3/8/94	4/12/94					VACATION & RE-ESTABLISHMENT			

RESURVEY		ORIGINAL SURVEY					
No.	Area	T.	P.	Sec.	Subdivision	Entry	Entryman
37	40.10	SE	104	25	SE 1/4 NE 1/4	185,506	Smith Murray
38	39.84	SW	104	26	NW 1/4 SE 1/4	185,503	Lee Upton
39	180.01	"	"	33	SE 1/4 SW 1/4	185,507	Robert J. Murray
40	640.00	"	"	36	All	55	Wyoming
41	334.63	"	"	30	SE 1/4	912	Dwight E. Halliwell
42	330.74	"	"	19	SE 1/4	913	William H. Felt
43	163.44	"	"	19	SE 1/4	1025	John A. Vels
44	323.06	"	"	19	NE 1/4	1026	Chas. H. Stonebridge
45	159.50	"	"	20	NE 1/4 SW 1/4	3	Wyoming
46	161.75	"	"	21	NW 1/4	602	W. T. Barrow
47	162.50	"	"	17	SE 1/4 SW 1/4	103	Walter B. Rusk
48	162.98	"	"	20	NE 1/4	101	W. C. Rusk
49	162.95	"	"	17	NE 1/4 SW 1/4	11	Martin Gruman
50	656.66	"	"	SE	102	16	Wyoming
51	203.95	"	"	15	SW 1/4 NE 1/4	973	Lillian G. Hoffman
52	163.30	"	"	14	W 1/4	90	Wesley Bloom
53	163.94	"	"	15	SE 1/4	101	John W. Thurmond
54	161.98	"	"	14	SE 1/4 SW 1/4	372	E. Upton
55	166.58	"	"	13	SW 1/4 SW 1/4	875	Elizabeth Upton
56	162.48	"	"	14	NE 1/4	1187	Harry W. Thurston
57	80.11	"	"	10	SE 1/4	1094	Smith Murray
58	80.20	"	"	11	SW 1/4	1190	Elida P. Murray
59	84.36	"	"	11	NE 1/4	1195	Wyoming
60	162.02	"	"	103	7	102	George Layton
62	162.28	"	"	18	SE 1/4	1519	Lee Upton

Mean Mag. Decl. 18° 33' E.
 Longitude 109° 18' W.
 Latitude 44° 26' N.

Scale 20 Chains to an inch

The above Map of County roads in Township No. 52 North of Range No. 104 West of the 6th Principal Meridian, is strictly conformable to the field notes of the surveys on file in this office which have been examined and approved.

County Surveyors Office
 Basin, Wyoming, Sept. 29, 1911.

Edw. W. Atchley
 County Surveyor.

Surveyed + Resurvey N.S. & W. Tp. lines, June 17, July 19, 1908.
 " Subdivision " August 13-30, "
 Connection lines " " "
 Meander " August 31, Sep. 3, "
 Segregated Tract lines " 2-12, "
 Retracement Lots 80 & 82 " 15, Sept. 2, "
 Resurvey N.E. Tp. lines June 4-9, 1906.
 " W. Tp. line " 11-12, 1904.

CERTIFICATE OF SURVEYOR
 I, PAUL R. CAMPBELL OF CODY, WYOMING, BEING A REGISTERED LAND SURVEYOR IN THE STATE OF WYOMING, HEREBY CERTIFY THAT THE PLATS SURVEYED BY ME AND UNDER MY SUPERVISION BASED ON RESEARCH OF PARK COUNTY COMMISSIONER'S MINUTES DATED FROM 1860 TO 1907, FIELD SURVEYS WERE NOT PERFORMED BY ME AND THE PLATS ARE ACCURATE TO THE BEST OF MY KNOWLEDGE.

Paul R. Campbell
 WYOMING REGISTRATION NO. 9574 LS