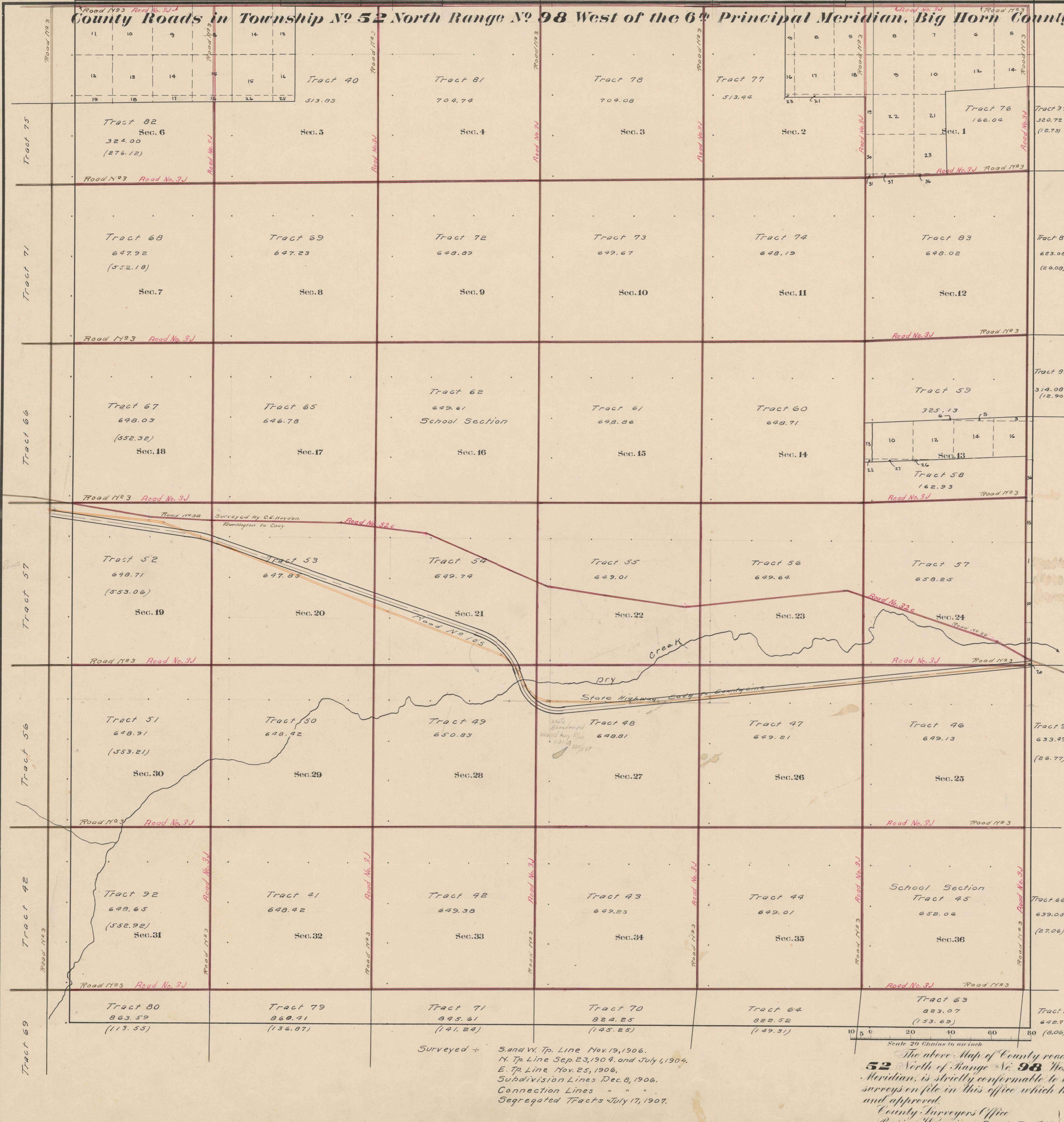


13th STANDARD PARALLEL NORTH
 County Roads in Township No. 52 North Range No. 98 West of the 6th Principal Meridian, Big Horn County, Wyoming



RECORD OF ROADS										VACATION		
ROAD NO.	JOURNAL NO.	DATE	WHEN PETITIONED	WHEN ALLOWED	ORIGINAL PETITION ON FILE	REVISION ON FILE	WIDTH	SECTION	DATE	DATE	DATE	
31	1	318	Oct. 6, 04	Nov. 1, 06	—	—	All Sec. Lines					
32	1	330	Aug. 4, 02	Sept. 2, 02	Yes	Yes	80'					
32c	2	223	3/11/20	4/7/22	✓	80'						
33			Aug 18/59						6 339	7/18/59		
33c			Aug 18/59						6 339	7/18/59		

Latitude 44° 26' N
 Longitude 108° 34' W
 Mean Mag. Decl. 18° 03' E

Surveyed by Sand W. Tp. Line Nov. 19, 1906.
 N. Tp. Line Sep. 23, 1904, and July 1, 1904.
 E. Tp. Line Nov. 25, 1906.
 Subdivision Lines Dec. 8, 1906.
 Connection Lines " " " "
 Segregated Tracts July 17, 1907.

The above Map of County roads in Township No. 52 North of Range No. 98 West of the 6th Principal Meridian, is strictly conformable to the field notes of the surveys on file in this office which have been examined and approved.
 County Surveyors Office
 Basin, Wyoming, Sept. 7, 1911
 Clyde W. Atterly,
 County Surveyor.