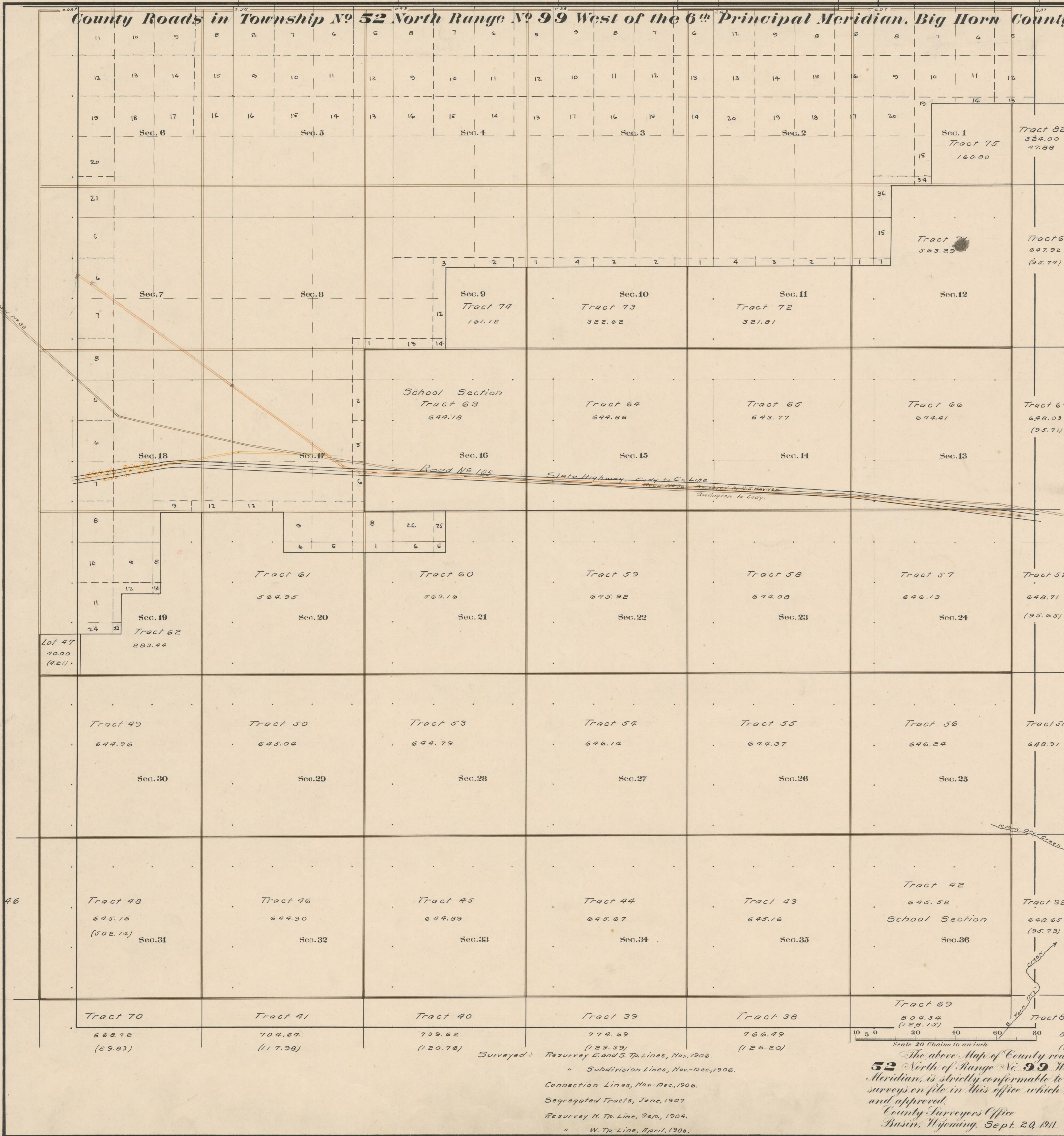


County Roads in Township No 52 North Range No 99 West of the 6th Principal Meridian, Big Horn County, Wyoming



RECORD OF ROADS VACATION									
ROAD NO.	JOURNAL NO.	PAGE	WHEN PETITIONED	WHEN ALLOWED	ORIGINAL PETITION ON FILE	PLAT ON FILE	REMARKS	JOURNAL NO.	PAGE
3	1	376	Oct 6, -04, Nov 1, -04	-	With	60	All Sec Lines Burlington to Cady Surveyed as usual		
32	1	330	Aug 3, -02, 30, 2, -02	182	60				
105	2	223	7/1/120	7/1/120	✓	60	State Highway Cady to Col. Line		
105	3	63	5/1/127	7/1/127	125	100	State Highway Cady to Col. Line		

Latitude 44° 26' N.
Longitude 108° 41' W.
Mean Mag. Decl. 17° 59' E.

Scale 20 Chains to an Inch
10 5 0 20 40 60 80 863.59 (1938)

The above Map of County roads in Township No 52 North of Range No 99 West of the 6th Principal Meridian, is strictly conformable to the field notes of the surveys on file in this office which have been examined and approved.
County Surveyors Office
Basin, Wyoming, Sept. 29, 1911

Elyde W. Atchley
County Surveyor

Surveyed: Resurvey E. and S. Tp. Lines, Nov., 1906.
" Subdivision Lines, Nov.-Dec., 1906.
Connection Lines, Nov.-Dec., 1906.
Segregated Tracts, June, 1907.
Resurvey N. Tp. Line, Sep., 1904.
" W. Tp. Line, April, 1906.

Bank
No. 32
Survey

Lot 46

Lot 47
40.00
(4.21)