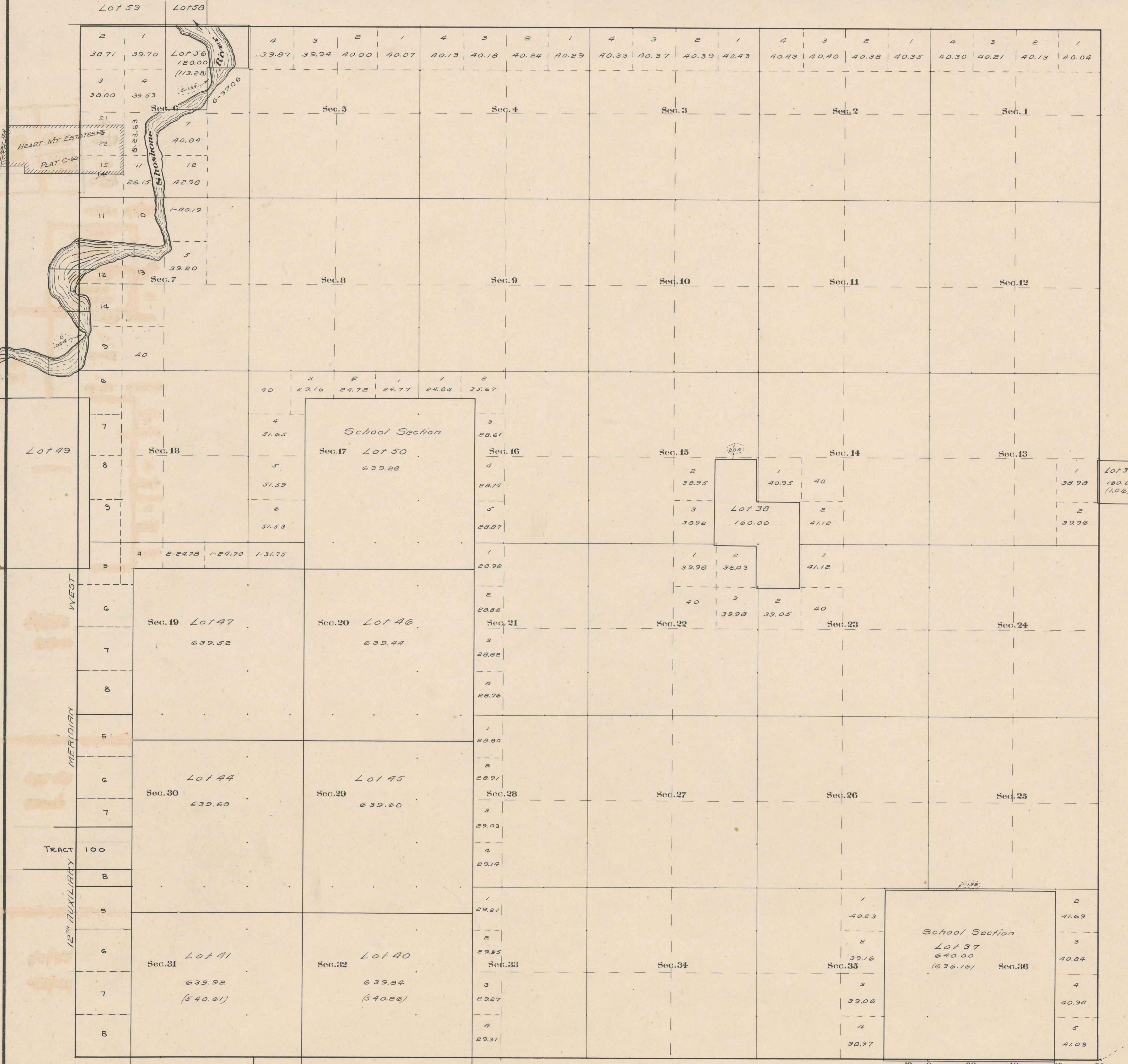


County Roads in Township N^o 53 North Range N^o 100 West of the 6th Principal Meridian, Big Horn County, Wyoming



| RECORD OF ROADS | | | | | | | | | | VACATION | | |
|-----------------|-------------|------|-----------------|--------------|---------------------------|--------------|---|-------------|------|----------|--|--|
| ROAD No. | JOURNAL No. | DATE | WHEN PETITIONED | WHEN ALLOWED | ORIGINAL PETITION ON FILE | PLAT ON FILE | REMARKS | JOURNAL No. | PAGE | DATE | | |
| 3 | 1 | 370 | Oct. 6, 04 | Nov. 1, 04 | - | - | 0.75 Sec. 18, 19, 20, 21, 22, 23, 24, 25, 26, 27, 28, 29, 30, 31, 32, 33, 34, 35, 36 | | | | | |
| 34 | 1 | 448 | Dec. 1, 03 | Apr. 5, 04 | Yes | - | Return Sec. 18 & 19, 20, 21, 22, 23, 24, 25, 26, 27, 28, 29, 30, 31, 32, 33, 34, 35, 36 | | | | | |

13th STANDARD PARALLEL NORTH
 Surveyed + Resurvey N.S. & W. Tp. Lines, July, 1905.
 " Subdivisions, Aug.-Sep., " "
 E. Boundary, Sep., 1904.
 Connections, Aug.-Sep., 1905.
 Private Land Claims, Aug., 1905.
 Meanders, Sep., 1905.

Scale 20 Chains to an inch
 The above Map of County roads in Township N^o 53 North of Range N^o 100 West of the 6th Principal Meridian, is strictly conformable to the field notes of the surveys on file in this office which have been examined and approved.
 County Surveyors Office
 Basin, Wyoming, Sept. 27, 1911.

Clayton W. Atchley
 County Surveyor