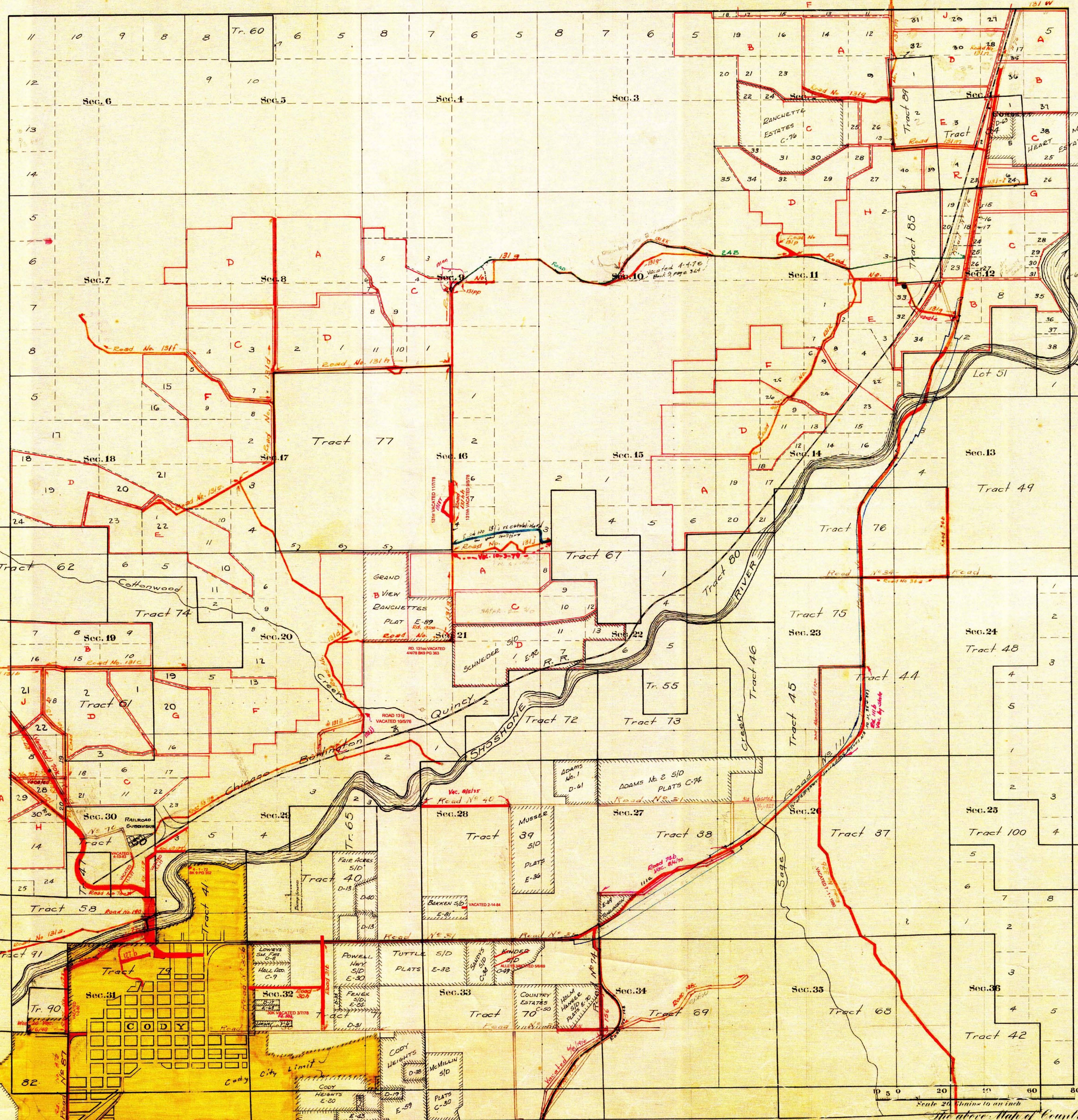


Park
County Roads in Township No 53 North Range No 101 West of the 6th Principal Meridian, Big Horn County, Wyoming



RECORD OF ROADS						
ROAD No	JOURNAL No	PAGE No	WHEN PETITIONED	WHEN ALLOWED	ON WHAT PETITION OR FILE	REMARKS
11	1	251	9/1/1901	12/1/1901	Yes	See plat of Original Survey
12	1	266	11/1/1901	12/1/1901	Yes	"
13	1	288	9/1/1902	9/1/1902	Yes	"
14	1	330	9/1/1902	9/1/1902	Yes	"
15	1	442	7/1/1903	7/1/1903	Yes	"
16	1	472	7/1/1903	7/1/1903	Yes	"
17	1	450	7/1/1903	7/1/1903	Yes	"
18	1	571	7/1/1903	7/1/1903	Yes	"
19	1	574	7/1/1903	7/1/1903	Yes	"
20	1	130	3/1/1908	3/1/1908	Yes	"
21	1	145	3/1/1908	3/1/1908	Yes	"
The above records are from Big Horn County						
PARK COUNTY						
22	1	67	5/1/1911	12/1/1911	Yes	Cody, Clark Park, and Paint Creek
23	1	120	7/1/1913	7/1/1913	Yes	Abilene - Corbett Road
24	1	61	11/1/1916	3/1/1917	Yes	Shoshone Canyon Road
25	1	72	3/1/1917	7/1/1917	Yes	Road in vicinity of Corbett Bridge
26	1	493	4/1/1918	7/1/1918	Yes	Spokane Highway, Cody, A. Cochran
27	1	52	7/1/1919	7/1/1919	Yes	R. E. Schindler, No. 101, Sec. 30, T. 53 N., R. 101 W.
28	1	52	7/1/1919	7/1/1919	Yes	W. J. Ferry, Cody, No. 101, Sec. 30, T. 53 N., R. 101 W.
29	1	52	7/1/1919	7/1/1919	Yes	W. J. Ferry, Cody, No. 101, Sec. 30, T. 53 N., R. 101 W.
30	1	52	7/1/1919	7/1/1919	Yes	W. J. Ferry, Cody, No. 101, Sec. 30, T. 53 N., R. 101 W.
31	1	52	7/1/1919	7/1/1919	Yes	W. J. Ferry, Cody, No. 101, Sec. 30, T. 53 N., R. 101 W.
32	1	52	7/1/1919	7/1/1919	Yes	W. J. Ferry, Cody, No. 101, Sec. 30, T. 53 N., R. 101 W.
33	1	52	7/1/1919	7/1/1919	Yes	W. J. Ferry, Cody, No. 101, Sec. 30, T. 53 N., R. 101 W.
34	1	52	7/1/1919	7/1/1919	Yes	W. J. Ferry, Cody, No. 101, Sec. 30, T. 53 N., R. 101 W.
35	1	52	7/1/1919	7/1/1919	Yes	W. J. Ferry, Cody, No. 101, Sec. 30, T. 53 N., R. 101 W.
36	1	52	7/1/1919	7/1/1919	Yes	W. J. Ferry, Cody, No. 101, Sec. 30, T. 53 N., R. 101 W.
37	1	52	7/1/1919	7/1/1919	Yes	W. J. Ferry, Cody, No. 101, Sec. 30, T. 53 N., R. 101 W.
38	1	52	7/1/1919	7/1/1919	Yes	W. J. Ferry, Cody, No. 101, Sec. 30, T. 53 N., R. 101 W.
39	1	52	7/1/1919	7/1/1919	Yes	W. J. Ferry, Cody, No. 101, Sec. 30, T. 53 N., R. 101 W.
40	1	52	7/1/1919	7/1/1919	Yes	W. J. Ferry, Cody, No. 101, Sec. 30, T. 53 N., R. 101 W.
41	1	52	7/1/1919	7/1/1919	Yes	W. J. Ferry, Cody, No. 101, Sec. 30, T. 53 N., R. 101 W.
42	1	52	7/1/1919	7/1/1919	Yes	W. J. Ferry, Cody, No. 101, Sec. 30, T. 53 N., R. 101 W.
43	1	52	7/1/1919	7/1/1919	Yes	W. J. Ferry, Cody, No. 101, Sec. 30, T. 53 N., R. 101 W.
44	1	52	7/1/1919	7/1/1919	Yes	W. J. Ferry, Cody, No. 101, Sec. 30, T. 53 N., R. 101 W.
45	1	52	7/1/1919	7/1/1919	Yes	W. J. Ferry, Cody, No. 101, Sec. 30, T. 53 N., R. 101 W.
46	1	52	7/1/1919	7/1/1919	Yes	W. J. Ferry, Cody, No. 101, Sec. 30, T. 53 N., R. 101 W.
47	1	52	7/1/1919	7/1/1919	Yes	W. J. Ferry, Cody, No. 101, Sec. 30, T. 53 N., R. 101 W.
48	1	52	7/1/1919	7/1/1919	Yes	W. J. Ferry, Cody, No. 101, Sec. 30, T. 53 N., R. 101 W.
49	1	52	7/1/1919	7/1/1919	Yes	W. J. Ferry, Cody, No. 101, Sec. 30, T. 53 N., R. 101 W.
50	1	52	7/1/1919	7/1/1919	Yes	W. J. Ferry, Cody, No. 101, Sec. 30, T. 53 N., R. 101 W.
51	1	52	7/1/1919	7/1/1919	Yes	W. J. Ferry, Cody, No. 101, Sec. 30, T. 53 N., R. 101 W.
52	1	52	7/1/1919	7/1/1919	Yes	W. J. Ferry, Cody, No. 101, Sec. 30, T. 53 N., R. 101 W.
53	1	52	7/1/1919	7/1/1919	Yes	W. J. Ferry, Cody, No. 101, Sec. 30, T. 53 N., R. 101 W.
54	1	52	7/1/1919	7/1/1919	Yes	W. J. Ferry, Cody, No. 101, Sec. 30, T. 53 N., R. 101 W.
55	1	52	7/1/1919	7/1/1919	Yes	W. J. Ferry, Cody, No. 101, Sec. 30, T. 53 N., R. 101 W.
56	1	52	7/1/1919	7/1/1919	Yes	W. J. Ferry, Cody, No. 101, Sec. 30, T. 53 N., R. 101 W.
57	1	52	7/1/1919	7/1/1919	Yes	W. J. Ferry, Cody, No. 101, Sec. 30, T. 53 N., R. 101 W.
58	1	52	7/1/1919	7/1/1919	Yes	W. J. Ferry, Cody, No. 101, Sec. 30, T. 53 N., R. 101 W.
59	1	52	7/1/1919	7/1/1919	Yes	W. J. Ferry, Cody, No. 101, Sec. 30, T. 53 N., R. 101 W.
60	1	52	7/1/1919	7/1/1919	Yes	W. J. Ferry, Cody, No. 101, Sec. 30, T. 53 N., R. 101 W.
61	1	52	7/1/1919	7/1/1919	Yes	W. J. Ferry, Cody, No. 101, Sec. 30, T. 53 N., R. 101 W.
62	1	52	7/1/1919	7/1/1919	Yes	W. J. Ferry, Cody, No. 101, Sec. 30, T. 53 N., R. 101 W.
63	1	52	7/1/1919	7/1/1919	Yes	W. J. Ferry, Cody, No. 101, Sec. 30, T. 53 N., R. 101 W.
64	1	52	7/1/1919	7/1/1919	Yes	W. J. Ferry, Cody, No. 101, Sec. 30, T. 53 N., R. 101 W.
65	1	52	7/1/1919	7/1/1919	Yes	W. J. Ferry, Cody, No. 101, Sec. 30, T. 53 N., R. 101 W.
66	1	52	7/1/1919	7/1/1919	Yes	W. J. Ferry, Cody, No. 101, Sec. 30, T. 53 N., R. 101 W.
67	1	52	7/1/1919	7/1/1919	Yes	W. J. Ferry, Cody, No. 101, Sec. 30, T. 53 N., R. 101 W.
68	1	52	7/1/1919	7/1/1919	Yes	W. J. Ferry, Cody, No. 101, Sec. 30, T. 53 N., R. 101 W.
69	1	52	7/1/1919	7/1/1919	Yes	W. J. Ferry, Cody, No. 101, Sec. 30, T. 53 N., R. 101 W.
70	1	52	7/1/1919	7/1/1919	Yes	W. J. Ferry, Cody, No. 101, Sec. 30, T. 53 N., R. 101 W.
71	1	52	7/1/1919	7/1/1919	Yes	W. J. Ferry, Cody, No. 101, Sec. 30, T. 53 N., R. 101 W.
72	1	52	7/1/1919	7/1/1919	Yes	W. J. Ferry, Cody, No. 101, Sec. 30, T. 53 N., R. 101 W.
73	1	52	7/1/1919	7/1/1919	Yes	W. J. Ferry, Cody, No. 101, Sec. 30, T. 53 N., R. 101 W.
74	1	52	7/1/1919	7/1/1919	Yes	W. J. Ferry, Cody, No. 101, Sec. 30, T. 53 N., R. 101 W.
75	1	52	7/1/1919	7/1/1919	Yes	W. J. Ferry, Cody, No. 101, Sec. 30, T. 53 N., R. 101 W.
76	1	52	7/1/1919	7/1/1919	Yes	W. J. Ferry, Cody, No. 101, Sec. 30, T. 53 N., R. 101 W.
77	1	52	7/1/1919	7/1/1919	Yes	W. J. Ferry, Cody, No. 101, Sec. 30, T. 53 N., R. 101 W.
78	1	52	7/1/1919	7/1/1919	Yes	W. J. Ferry, Cody, No. 101, Sec. 30, T. 53 N., R. 101 W.
79	1	52	7/1/1919	7/1/1919	Yes	W. J. Ferry, Cody, No. 101, Sec. 30, T. 53 N., R. 101 W.
80	1	52	7/1/1919	7/1/1919	Yes	W. J. Ferry, Cody, No. 101, Sec. 30, T. 53 N., R. 101 W.
81	1	52	7/1/1919	7/1/1919	Yes	W. J. Ferry, Cody, No. 101, Sec. 30, T. 53 N., R. 101 W.
82	1	52	7/1/1919	7/1/1919	Yes	W. J. Ferry, Cody, No. 101, Sec. 30, T. 53 N., R. 101 W.
83	1	52	7/1/1919	7/1/1919	Yes	W. J. Ferry, Cody, No. 101, Sec. 30, T. 53 N., R. 101 W.
84	1	52	7/1/1919	7/1/1919	Yes	W. J. Ferry, Cody, No. 101, Sec. 30, T. 53 N., R. 101 W.
85	1	52	7/1/1919	7/1/1919	Yes	W. J. Ferry, Cody, No. 101, Sec. 30, T. 53 N., R. 101 W.
86	1	52	7/1/1919	7/1/1919	Yes	W. J. Ferry, Cody, No. 101, Sec. 30, T. 53 N., R. 101 W.
87	1	52	7/1/1919	7/1/1919	Yes	W. J. Ferry, Cody, No. 101, Sec. 30, T. 53 N., R. 101 W.
88	1	52	7/1/1919	7/1/1919	Yes	W. J. Ferry, Cody, No. 101, Sec. 30, T. 53 N., R. 101 W.
89	1	52	7/1/1919	7/1/1919	Yes	W. J. Ferry, Cody, No. 101, Sec. 30, T. 53 N., R. 101 W.
90	1	52	7/1/1919	7/1/1919	Yes	W. J. Ferry, Cody, No. 101, Sec. 30, T. 53 N., R. 101 W.
91	1	52	7/1/1919	7/1/1919	Yes	W. J. Ferry, Cody, No. 101, Sec. 30, T. 53 N., R. 101 W.
92	1	52	7/1/1919	7/1/1919	Yes	W. J. Ferry, Cody, No. 101, Sec. 30, T. 53 N., R. 101 W.
93	1	52	7/1/1919	7/1/1919	Yes	W. J. Ferry, Cody, No. 101, Sec. 30, T. 53 N., R. 101 W.
94	1	52	7/1/1919	7/1/1919	Yes	W. J. Ferry, Cody, No. 101, Sec. 30, T. 53 N., R. 101 W.
95	1	52	7/1/1919	7/1/1919	Yes	W. J. Ferry, Cody, No. 101, Sec. 30, T. 53 N., R. 101 W.
96	1	52	7/1/1919	7/1/1919	Yes	W. J. Ferry, Cody, No. 101, Sec. 30, T. 53 N., R. 101 W.
97	1	52	7/1/1919	7/1/1919	Yes	W. J. Ferry, Cody, No. 101, Sec. 30, T. 53 N., R. 101 W.
98	1	52	7/1/1919	7/1/1919	Yes	W. J. Ferry, Cody, No. 101, Sec. 30, T. 53 N., R. 101 W.
99	1	52	7/1/1919	7/1/1919	Yes	W. J. Ferry, Cody, No. 101, Sec. 30, T. 53 N., R. 101 W.
100	1	52	7/1/1919	7/1/1919	Yes	W. J. Ferry, Cody, No. 101, Sec. 30, T. 53 N., R. 101 W.

* Rd. 1311: See Road Record files for change between J.D. & 1502 at the Healey Plant and Cottonwood Creek.

CERTIFICATE OF SURVEYOR

I, PAUL R. CAMPBELL OF CODY, WYOMING, BEING A REGISTERED PLAT SURVEYOR IN THE STATE OF WYOMING, HEREBY CERTIFY THAT THIS MAP WAS UPDATED BY ME AND UNDER MY SUPERVISION BASED ON RESEARCH OF PARK COUNTY COMMISSIONER'S MINUTES DATED FROM 1867 TO 2007. FIELD SURVEYS WERE NOT PERFORMED BY ME AND THE PLATS ARE ACCURATE TO THE BEST OF MY KNOWLEDGE.

Paul R. Campbell
 Date: 7/1/2010
 WYOMING REGISTRATION NO. 2571 LS

The above map of County roads in Township No. 53 North of Range No. 101 West of the 6th Principal Meridian, is strictly conformable to the field notes of the surveys on file in this office which have been examined and approved.

Howard P. Bell
 County Surveyor's Office
 Cody, Basins, Wyoming.

SCALE: 1" = 200 feet