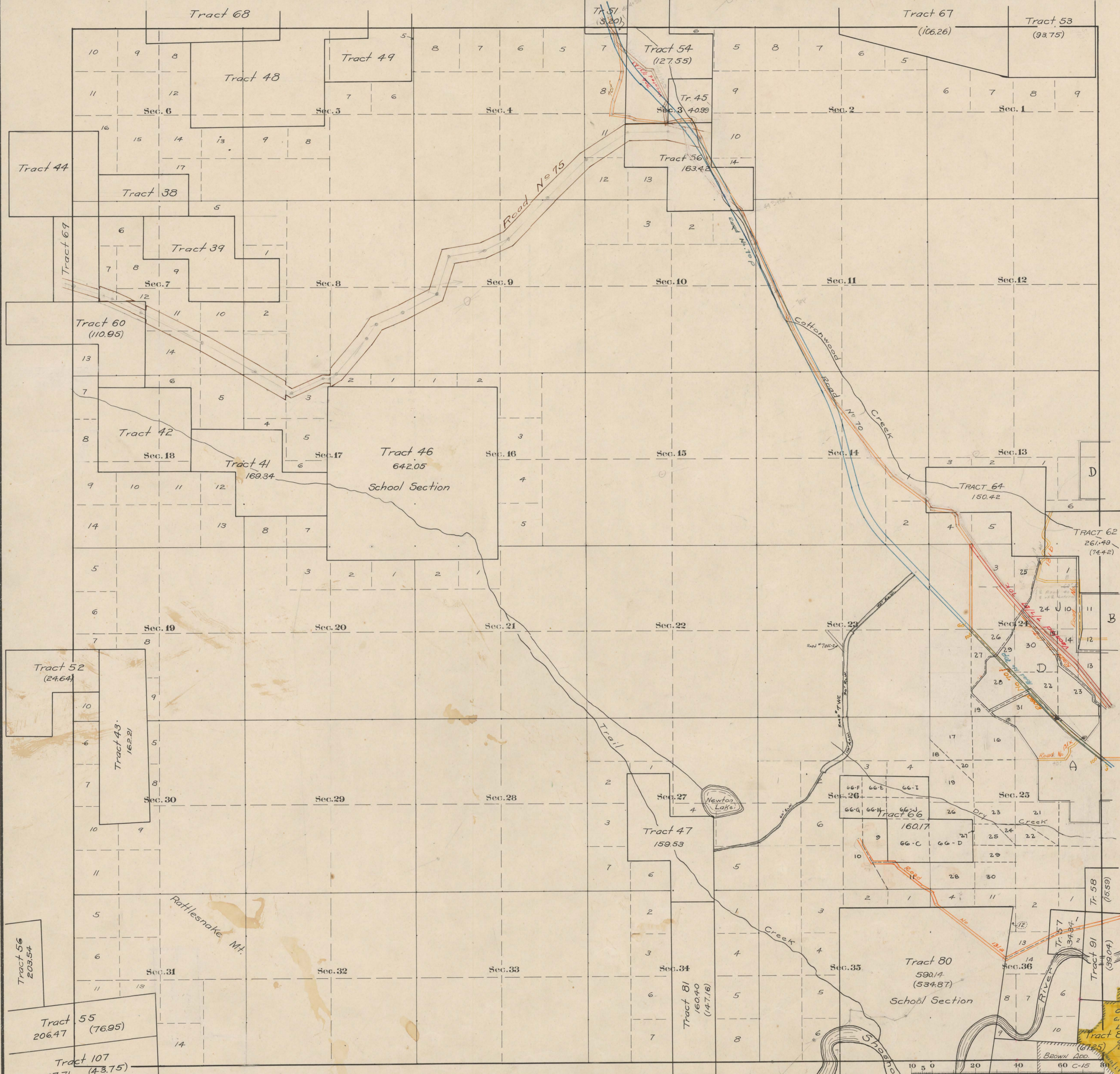


County Roads in Township N^o 53 North Range N^o 102 West of the 6th Principal Meridian. Park County, Wyoming



RECORD OF ROADS										VACATION		
Road No	Journal No	Page	When Petitioned	When Allowed	Original Return on Petition	Plat on File	Remarks	Journal No	Page	Date		
39	2	135	Mar. 3-1900		Yes	Yes	See Plat Orig. Surv.	Never Established				
70	1	67	May 1-1911	186/1911	224/1912	Yes	With Surv. Clerk's Report Surveyed by Plat					
70A	2	70A	2	186/1911	224/1912	Yes	24 June 1913 Sec. 3-6/113					
70B	2	70B	2	186/1911	224/1912	Yes	100' Street from Sec. 24					
70C	2	70C	2	186/1911	224/1912	Yes	100' Street from Sec. 24					
70D	2	70D	2	186/1911	224/1912	Yes	100' Street from Sec. 24					
70E	2	70E	2	186/1911	224/1912	Yes	100' Street from Sec. 24					
70F	2	70F	2	186/1911	224/1912	Yes	100' Street from Sec. 24					
70G	2	70G	2	186/1911	224/1912	Yes	100' Street from Sec. 24					
70H	2	70H	2	186/1911	224/1912	Yes	100' Street from Sec. 24					
70I	2	70I	2	186/1911	224/1912	Yes	100' Street from Sec. 24					
70J	2	70J	2	186/1911	224/1912	Yes	100' Street from Sec. 24					
70K	2	70K	2	186/1911	224/1912	Yes	100' Street from Sec. 24					
70L	2	70L	2	186/1911	224/1912	Yes	100' Street from Sec. 24					
70M	2	70M	2	186/1911	224/1912	Yes	100' Street from Sec. 24					
70N	2	70N	2	186/1911	224/1912	Yes	100' Street from Sec. 24					
70O	2	70O	2	186/1911	224/1912	Yes	100' Street from Sec. 24					
70P	2	70P	2	186/1911	224/1912	Yes	100' Street from Sec. 24					
70Q	2	70Q	2	186/1911	224/1912	Yes	100' Street from Sec. 24					
70R	2	70R	2	186/1911	224/1912	Yes	100' Street from Sec. 24					
70S	2	70S	2	186/1911	224/1912	Yes	100' Street from Sec. 24					

The above plat of County roads in Township N^o 53 North of Range N^o 102 West of the 6th Principal Meridian, is strictly conformable to the field notes of the survey on file in this office which have been examined and approved.
 County Surveyors Office
 Cody, Wyoming, Mch. 24 1913
 Howard F. Bell
 County Surveyor.