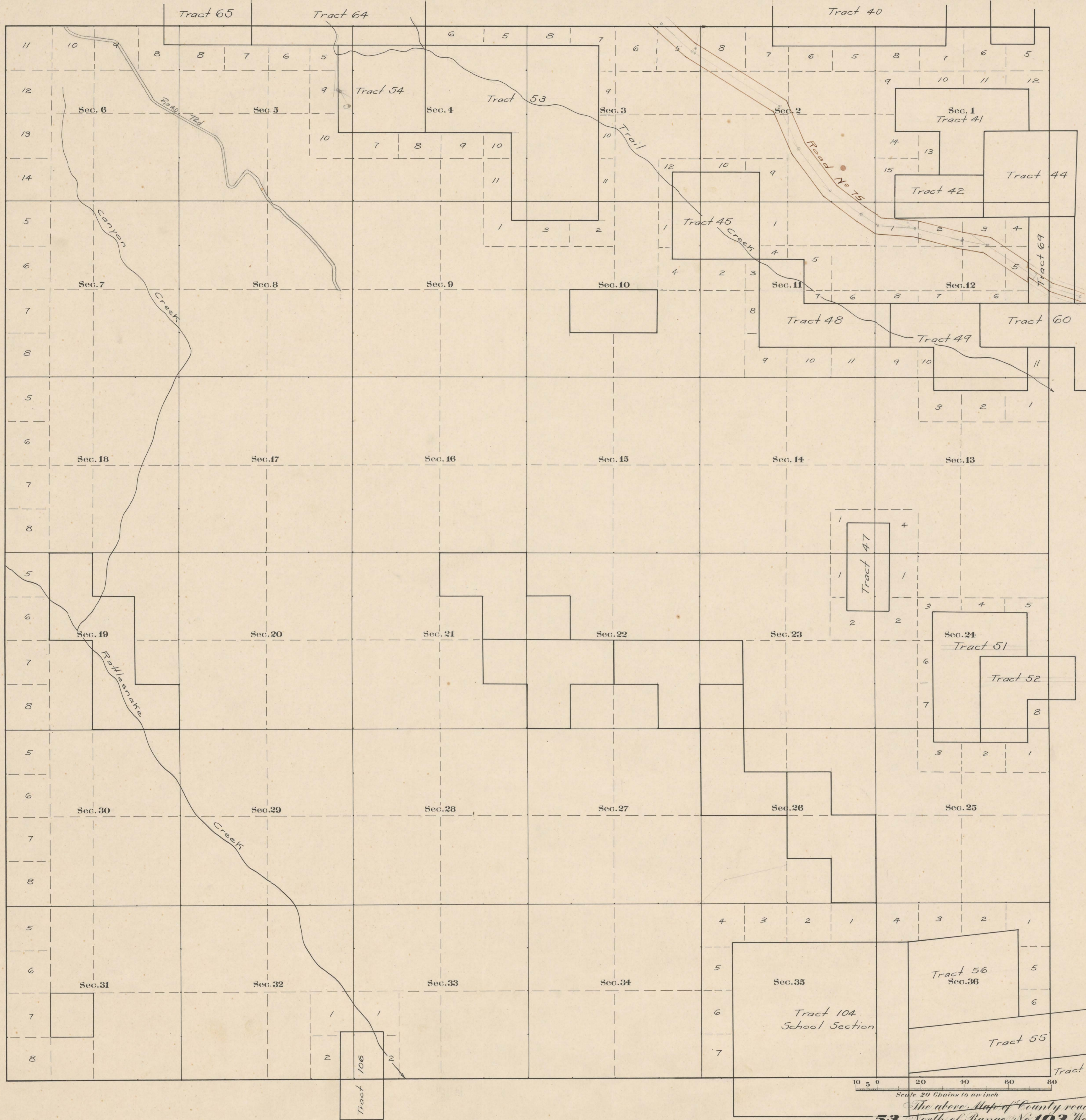


County Roads in Township No 53 North Range No 103 West of the 6th Principal Meridian, Big Horn County, Wyoming



RECORD OF ROADS VACATION										
ROAD No.	JOURNAL No.	PAGE	WHEN PETITIONED	WHEN ALLOWED	ORIGINAL PETITION FILED	DATE FILED	REMARKS	JOURNAL No.	PAGE	DATE
75	1	257	7/14/14	12/1/14	✓	508	Shed Trail			
76						60	Sum. East			
							Revised 23			

Scale 20 Chains to an inch

The above map of County roads in Township No. 53 North of Range No. 103 West of the 6th Principal Meridian, is strictly conformable to the field notes of the surveys on file in this office which have been examined and approved.
 County Surveyors Office
 Basin, Wyoming.

Howard F. Bell,
 County Surveyor.