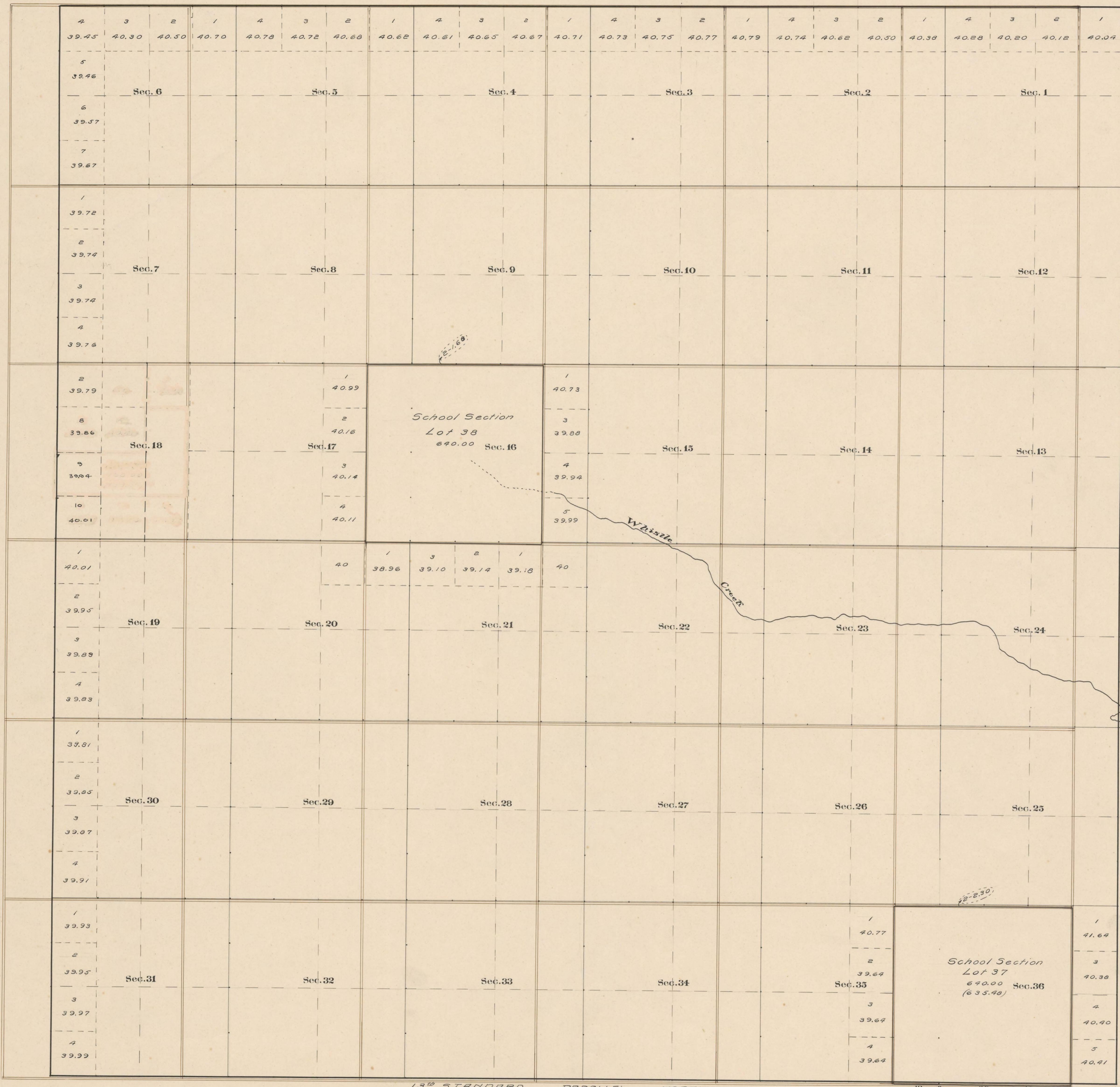


County Roads in Township N^o 53 North Range N^o 99 West of the 6th Principal Meridian, Big Horn County, Wyoming



RECORD OF ROADS										VACATION	
ROAD NO.	JOURNAL NO.	PAGE	WHEN PETITIONED	WHY	WELDED	ORIGINAL PETITION ON FILE	FILE	REMARKS	JOURNAL NO.	PAGE	DATE
3	1	376	Oct. 6, -09	Nov. 1, '09	-	-	On All Sec. Lines				

Surveyed: Resurvey Tp. Lines, Sep., 1902.
 " Subdivisions, Oct., 1902.
 Connections, Oct., 1902.
 Private Land Claims, Oct., 1902.

The above Map of County roads in Township No. 53 North of Range No. 99 West of the 6th Principal Meridian, is strictly conformable to the field notes of the surveys on file in this office which have been examined and approved.
 County Surveyors Office
 Basin, Wyoming, Sept 20, 1911

Clyde W. Otteley
 County Surveyor.

Lot 44 31/4.
 Long. 108° 44' 30" W.
 Mean Mag. Dec. 1, 1870 E