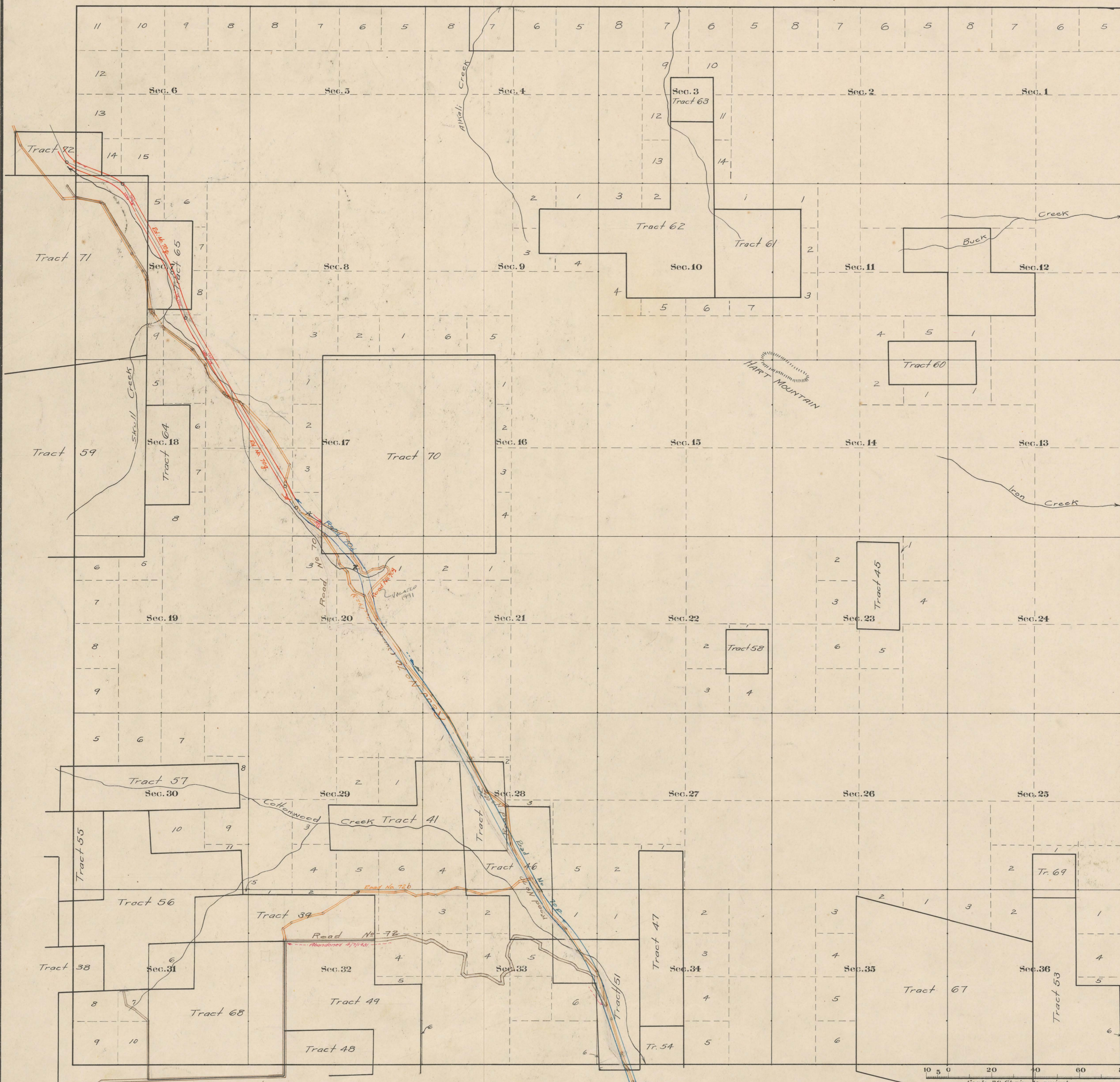


County Roads in Township No 54 North Range No 102 West of the 6th Principal Meridian, ^{Park} Big Horn County, Wyoming



RECORD OF ROADS					REMARKS
Road No	Journal No	PAGE	WHEN PETITIONED	WHEN ALLOWED	
39	2	135	9/9/1908	—	See Plat of Original Survey. This Road was petitioned under Big Horn County.
72	1	198	5/21/1914	7/21/1914	Cody - Clarks Fork - Surveyed by H.H. Patton.
70	1	67	5/21/1914	5/21/1914	Re-surveyed by E.W. Sennebacher.
72	3	160	12/6/1908	12/6/1908	—
76	3	181	—	—	Action of 76 vacated 4/1/1921.
70	1	187	7/1/1913	7/1/1913	See Sec. 23.
70	3	244	3/2/1932	5/5/1932	Skull Creek Hill Grade.
70	3	455	3/2/1935	4/4/1935	—
70	5	262	10/4/20	11/14/20	Cody - Clarks Fork - June 702.
70	1	173	8/2/52	8/2/52	See Page 5 and 6.

Scale 20 Chains to an inch.
The above Map of County roads in Township No. 54 North of Range No. 102 West of the 6th Principal Meridian, is strictly conformable to the field notes of the surveys on file in this office which have been examined and approved.
County Surveyors Office
CODY ~~Wyoming~~ Wyoming, September 4, 1915.

Howard F. Bell,
County Surveyor.