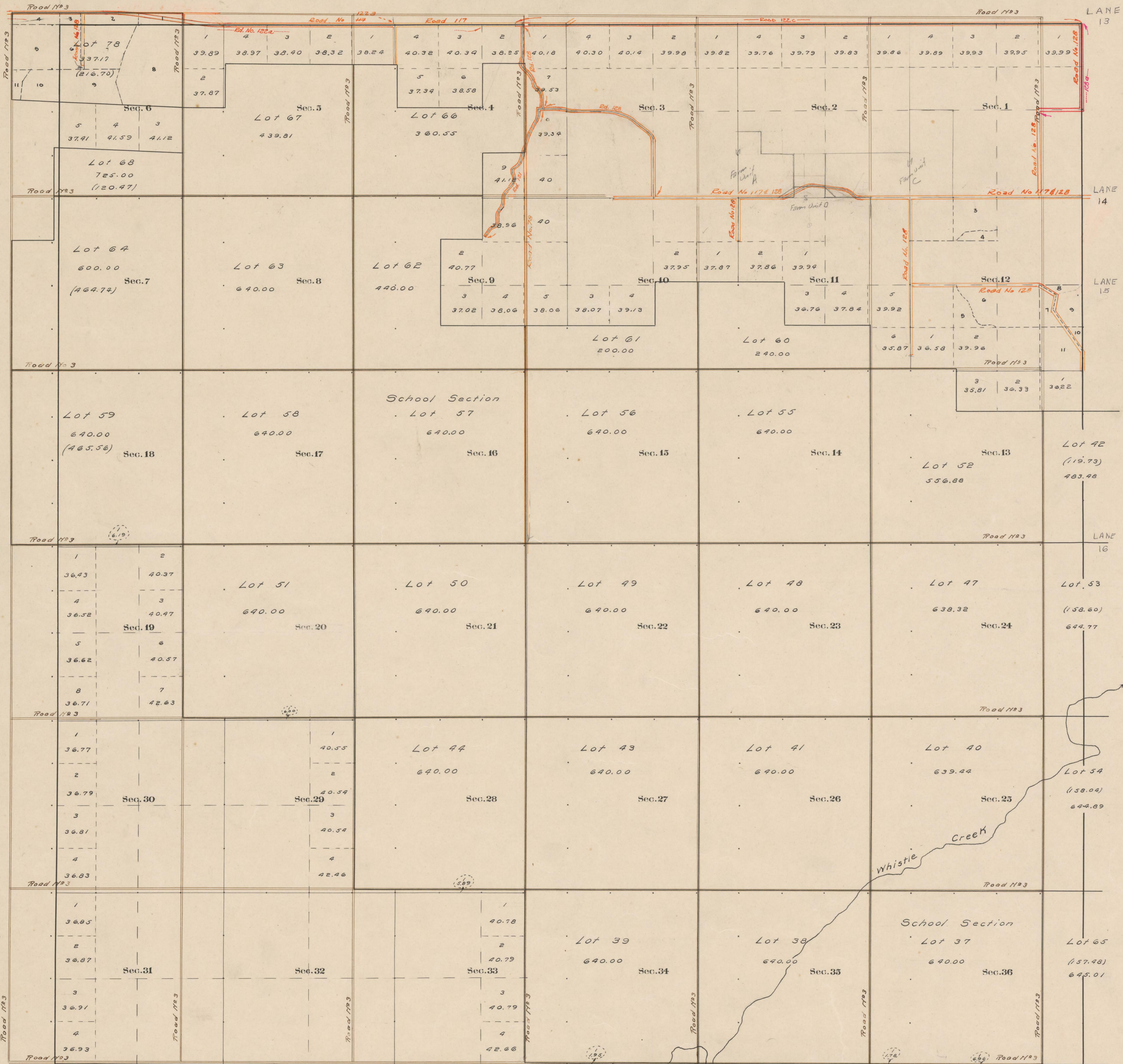


County Roads in Township No 54 North Range No 98 West of the 6th Principal Meridian, Big Horn County, Wyoming



RECORD OF ROADS										VACATION		
ROAD NO.	JOURNAL NO.	PAGE	WHEN PETITIONED	WHEN ALLOWED	ORIGINAL PETITION ON FILE	FILE ON FILE	FILE	FILE	FILE	JOURNAL NO.	PAGE	DATE
3	1	516	Oct 6, -04	Nov 1, -04	-	-	-	-	-	On All Sec. Lines		
78	1	242	10/1/1912	10/1/1912	60	60	60	60	60	Willwood #3		
117	3	37	2/1/1920	8/7/1920	60	60	60	60	60	Whispering at part of Road No. 117		
121	3	166	12/1/1920	8/1/1921	60	60	60	60	60	US R.R. Road		
122	4	209	8/1/1920	8/1/1920	100	100	100	100	100	US R.R. Road		
123	3	225	2/1/1921	7/1/1921	60	60	60	60	60	US R.R. Road		
125	7	162	3/1/22	2/1/22	60	60	60	60	60	US R.R. Road	9 410	8/2/20

Surveyed + N. S. and W. Tp. Lines, Sep-Oct, 1904.  
 Subdivisions, Nov, 1904.  
 Connections, Oct-Nov, 1904.  
 Private Land Claims, Oct-Nov, 1904.  
 East Boundary, July, 1904.

Lot 45 (380) 328.64  
 Lot 46 (138) 337.28

Scale 20 Chains to an inch  
 The above Map of County roads in Township No. 54 North of Range No. 98 West of the 6th Principal Meridian, is strictly conformable to the field notes of the surveys on file in this office which have been examined and approved.  
 County Surveyors Office  
 Basin, Wyoming, Sept, 7, 1911

Latitude 44° 36' N.  
 Longitude 108° 37' W.  
 Merid. Mag. Decl. 17° 40' E.

Clyde W. Atchley,  
 County Surveyor.