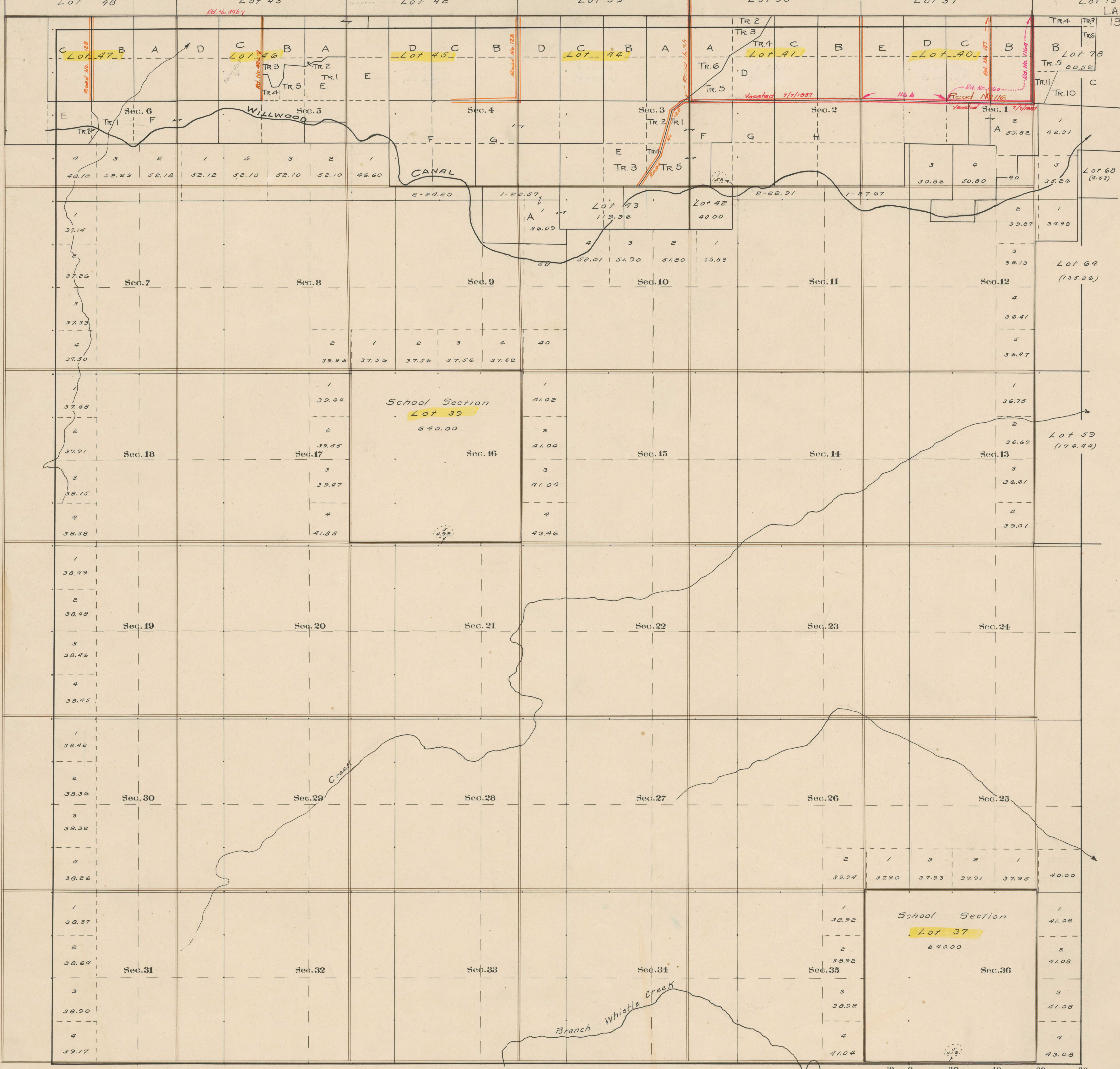


County Roads in Township No 54 North Range No 99 West of the 6th Principal Meridian, Big Horn County, Wyoming



RECORD OF ROADS VACATION										
ROAD No.	JOURNAL No.	PAGE	WHEN PETITIONED	WHEN ALLOWED	ORIGINAL PETITION DAY FILE	PLAT ON FILE	REMARKS	JOURNAL No.	PAGE	DATE
3	1	516	Oct 6, 09	Nov 1, 09	-	With	On All Sections			
54	III	232	1/29/1931	2/25/1932	Yes	60'	Willow Rd. No. 2			
116	3	46	4/6/1929	5/8/1929	-	60'	Willow Rd. No. 2			
116a							Portion Vacated	3	426	7/7/1937
128	3	625	5/5/1931	7/7/1931		60'				
49c	1	171	11/9/1950	11/9/1950		30'	Ac. W. of Line			
137	7	351		4/7/28						
116b								9	411	8/2/28

Latitude 44°36'N.
Longitude 108°44'30"W.
Mean Map Decl. 18°12'E.

Surveyed: Resurvey Tp. Lines, Sep-Oct, 1904.
" Subdivisions, April, 1905.
Private Land Claims, " " "
Connections, " " "

Scale 20 Chains to an inch
The above Map of County roads in Township No. 54 North of Range No. 99 West of the 6th Principal Meridian, is strictly conformable to the field notes of the surveys on file in this office which have been examined and approved.
County Surveyors Office
Basin, Wyoming, Sept. 20, 1911.
Lloyd W. Athuly,
County Surveyor.