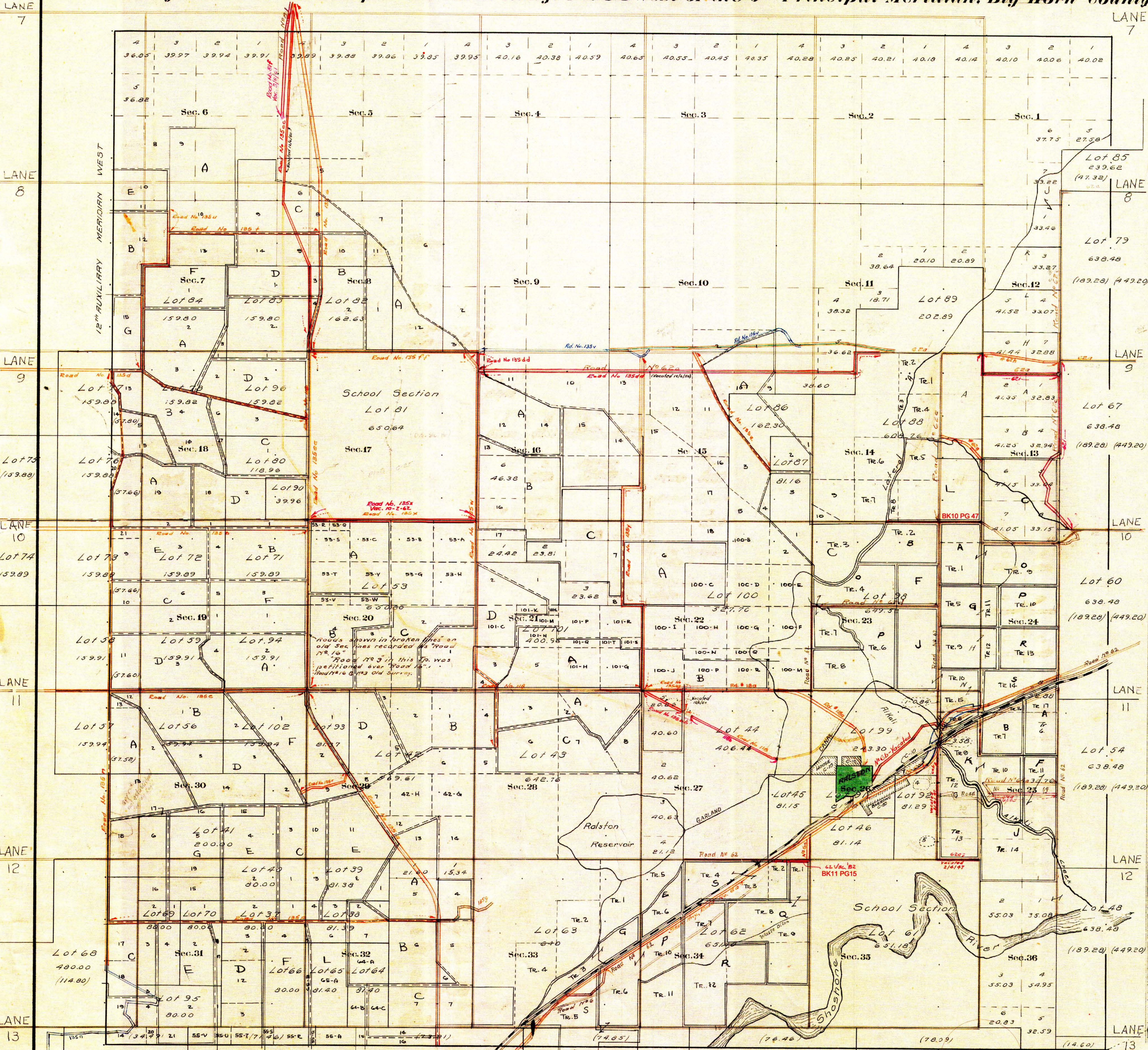


County Roads in Township N<sup>o</sup> 55 North Range N<sup>o</sup> 100 West of the 6<sup>th</sup> Principal Meridian, Big Horn County, Wyoming



RECORD OF ROADS										VACATION	
ROAD NO.	JOURNAL P. #	DATE	WHEN	WHY	APPROVED	APPROVAL BY	REMARKS	JOURNAL P. #	DATE	BY	DATE
6	1	313	Oct. 6-08	Nov. 1-08	-	Consolidated	Consolidated				
16	1	504	Sept. 6-09	Oct. 6-09	Yes	Consolidated	Consolidated				
3	1	516	Oct. 6-09	Nov. 1-09	-	Consolidated	Consolidated				

ROAD NO.	JOURNAL P. #	DATE	WHEN	WHY	APPROVED	APPROVAL BY	REMARKS	JOURNAL P. #	DATE	BY	DATE
62	1	29	Jan. 3-11	May 2-11	Yes	Consolidated	Consolidated				
63	1	108	May 2-11	Dec. 11-12	Yes	Consolidated	Consolidated				
64	1	284	May 2-11	May 2-11	Yes	Consolidated	Consolidated				
65	1	284	May 2-11	May 2-11	Yes	Consolidated	Consolidated				
66	1	170	May 2-11	May 2-11	Yes	Consolidated	Consolidated				
67	3	84	May 2-11	May 2-11	Yes	Consolidated	Consolidated				
68	3	236	May 2-11	May 2-11	Yes	Consolidated	Consolidated				
69	2	116	May 2-11	May 2-11	Yes	Consolidated	Consolidated				
70	3	145	May 2-11	May 2-11	Yes	Consolidated	Consolidated				
71	3	619	May 2-11	May 2-11	Yes	Consolidated	Consolidated				
72	5	238	May 2-11	May 2-11	Yes	Consolidated	Consolidated				
73	5	238	May 2-11	May 2-11	Yes	Consolidated	Consolidated				
74	5	238	May 2-11	May 2-11	Yes	Consolidated	Consolidated				
75	5	238	May 2-11	May 2-11	Yes	Consolidated	Consolidated				
76	5	238	May 2-11	May 2-11	Yes	Consolidated	Consolidated				
77	5	238	May 2-11	May 2-11	Yes	Consolidated	Consolidated				
78	5	238	May 2-11	May 2-11	Yes	Consolidated	Consolidated				
79	5	238	May 2-11	May 2-11	Yes	Consolidated	Consolidated				
80	5	238	May 2-11	May 2-11	Yes	Consolidated	Consolidated				
81	5	238	May 2-11	May 2-11	Yes	Consolidated	Consolidated				
82	5	238	May 2-11	May 2-11	Yes	Consolidated	Consolidated				
83	5	238	May 2-11	May 2-11	Yes	Consolidated	Consolidated				
84	5	238	May 2-11	May 2-11	Yes	Consolidated	Consolidated				
85	5	238	May 2-11	May 2-11	Yes	Consolidated	Consolidated				
86	5	238	May 2-11	May 2-11	Yes	Consolidated	Consolidated				
87	5	238	May 2-11	May 2-11	Yes	Consolidated	Consolidated				
88	5	238	May 2-11	May 2-11	Yes	Consolidated	Consolidated				
89	5	238	May 2-11	May 2-11	Yes	Consolidated	Consolidated				
90	5	238	May 2-11	May 2-11	Yes	Consolidated	Consolidated				
91	5	238	May 2-11	May 2-11	Yes	Consolidated	Consolidated				
92	5	238	May 2-11	May 2-11	Yes	Consolidated	Consolidated				
93	5	238	May 2-11	May 2-11	Yes	Consolidated	Consolidated				
94	5	238	May 2-11	May 2-11	Yes	Consolidated	Consolidated				
95	5	238	May 2-11	May 2-11	Yes	Consolidated	Consolidated				
96	5	238	May 2-11	May 2-11	Yes	Consolidated	Consolidated				
97	5	238	May 2-11	May 2-11	Yes	Consolidated	Consolidated				
98	5	238	May 2-11	May 2-11	Yes	Consolidated	Consolidated				
99	5	238	May 2-11	May 2-11	Yes	Consolidated	Consolidated				
100	5	238	May 2-11	May 2-11	Yes	Consolidated	Consolidated				

**CERTIFICATE OF SURVEYOR**  
 I, PAUL R. CAMPBELL OF CODY, WYOMING, BEING A REGISTERED SURVEYOR IN THE STATE OF WYOMING, HEREBY CERTIFY THAT THIS MAP WAS SURVEYED BY ME AND UNDER MY SUPERVISION BASED ON RESEARCH OF PARK COUNTY COMMISSIONER'S MINUTES DATED FROM 1960 TO 2010. ALL SURVEYS WERE NOT PERFORMED BY ME AND THE PLATS ARE ACCURATE TO THE BEST OF MY KNOWLEDGE.  
 Paul R. Campbell  
 Wyoming Registration No. 267145

Surveyed + N.S. & W. Tp. Lines, July-Sept., 1905.  
 Subdivisions, Sept-Oct., 1905.  
 Connections, "  
 Meanders, October, 1905.  
 Private Land Claims, Sept., 1905.  
 E. Tp. Line, April, 1904.

The above map of County roads in Township No. 55 North of Range No. 100 West of the 6<sup>th</sup> Principal Meridian is strictly conformable to the field notes of the surveys on file in this office which have been examined and approved.  
 County Surveyors Office  
 Basin, Wyoming, Sept. 27, 1911.  
 Clyde W. Atchley  
 County Surveyor.