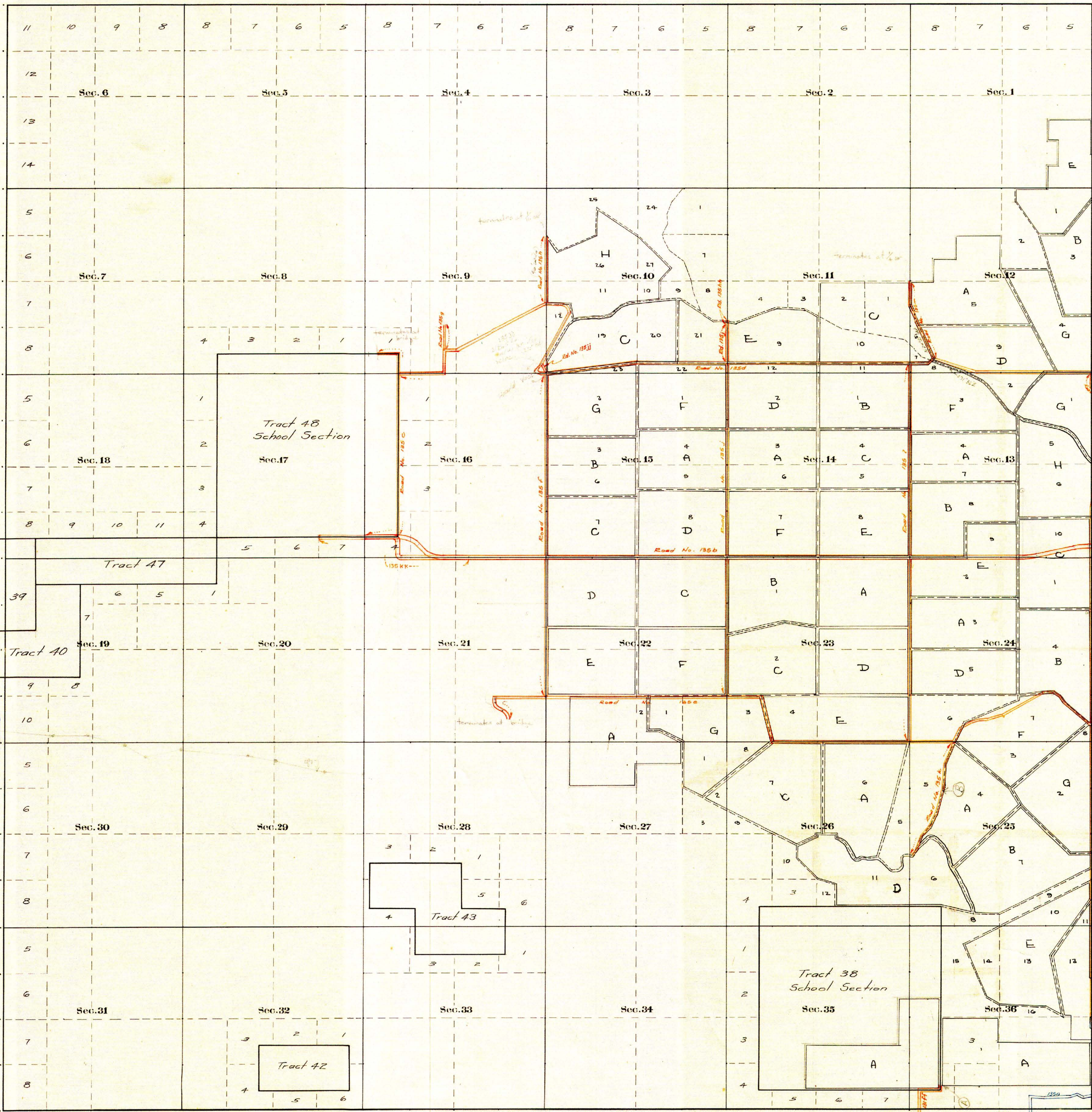


County Roads in Township N<sup>o</sup> 55 North Range N<sup>o</sup> 101 West of the 6<sup>th</sup> Principal Meridian, ~~Big Horn~~ <sup>Park</sup> County, Wyoming

RCOA 23  
RCOA 22  
RCOA 21  
RCOA 20  
RCOA 19



| RECORD OF ROADS |             |          |                 |              |                  |              |  |          |  |
|-----------------|-------------|----------|-----------------|--------------|------------------|--------------|--|----------|--|
| Road No.        | Journal No. | Page No. | When Petitioned | When Allowed | Petition on File | Flat on File | REMARKS                                  |          |  |
| 1350            | 5           | 53       | 2/5/1900        | 7/5/1901     | ✓                | 60'          | Heart Mountain Road (Group 1)            | (Sec. 1) |  |
| 1350            | 5           | 58       | 7/5/1900        | 7/5/1901     | ✓                | 100'         | Heart Mountain Road (Group 2)            | (Sec. 1) |  |
| 1351            | "           | "        | "               | "            | "                | 60'          | "  | "        |  |
| 1352            | "           | "        | "               | "            | "                | 60'          | "  | "        |  |
| 1353            | "           | "        | "               | "            | "                | 60'          | "  | "        |  |
| 1354            | "           | "        | "               | "            | "                | 60'          | "  | "        |  |
| 1355            | "           | "        | "               | "            | "                | 60'          | "  | "        |  |
| 1356            | "           | "        | "               | "            | "                | 60'          | "  | "        |  |
| 1357            | "           | "        | "               | "            | "                | 60'          | "  | "        |  |
| 1358            | "           | "        | "               | "            | "                | 60'          | "  | "        |  |
| 1359            | "           | "        | "               | "            | "                | 60'          | "  | "        |  |
| 1360            | "           | "        | "               | "            | "                | 60'          | "  | "        |  |
| 1361            | "           | "        | "               | "            | "                | 60'          | "  | "        |  |
| 1362            | "           | "        | "               | "            | "                | 60'          | "  | "        |  |
| 1363            | "           | "        | "               | "            | "                | 60'          | "  | "        |  |
| 1364            | "           | "        | "               | "            | "                | 60'          | "  | "        |  |
| 1365            | "           | "        | "               | "            | "                | 60'          | "  | "        |  |
| 1366            | "           | "        | "               | "            | "                | 60'          | "  | "        |  |
| 1367            | "           | "        | "               | "            | "                | 60'          | "  | "        |  |
| 1368            | "           | "        | "               | "            | "                | 60'          | "  | "        |  |
| 1369            | "           | "        | "               | "            | "                | 60'          | "  | "        |  |
| 1370            | "           | "        | "               | "            | "                | 60'          | "  | "        |  |
| 1371            | 1           | 171      | 7/5/1900        | 12/6/1900    | ✓                | 60'          | Surveyed with petition dated 7/5/1900    |          |  |
| 1372            | 1           | 173      | "               | "            | "                | 60'          | "  |          |  |
| 1373            | 3           | 432      | 7/5/1900        | 7/5/1901     | ✓                | 60'          | Alkali Cr. Bridge (20' x 12') Sec. 10-11 |          |  |
| 1374            | 3           | 439      | 7/5/1900        | 12/6/1900    | ✓                | 60'          | Altered to 80' wide                      |          |  |
| 1375            | 3           | 479      | 7/5/1900        | 12/6/1900    | ✓                | 60'          | Alkali Cr. Bridge in Section 9           |          |  |
| 1376            | 3           | 480      | 7/5/1900        | 7/5/1901     | ✓                | 60'          | "  |          |  |
| 1377            | 3           | 305      | "               | "            | "                | 60'          | RE-ESTABLISHED                           |          |  |

Ex. C  
8-30-78 E.F.

Petitioners  
EXHIBIT  
"C"  
7-17-79 E

**CERTIFICATE OF SURVEYOR**  
I, PAUL R. CAMPBELL OF CODY, WYOMING, BEING A REGISTERED LAND SURVEYOR IN THE STATE OF WYOMING, HEREBY CERTIFY THAT THIS MAP WAS UPDATED BY ME AND UNDER MY SUPERVISION BASED ON RESEARCH OF PARK COUNTY COMMISSIONER'S MINUTES DATED FROM 1862 TO 1900. FIELD SURVEYS WERE NOT PERFORMED BY ME AND THE PLATS ARE ACCURATE TO THE BEST OF MY KNOWLEDGE.  
Paul R. Campbell  
Cody, Wyoming  
WYOMING REGISTRATION NO. 2571 LS

Scale 20 Chains to an Inch  
The above Map of County roads in Township No. 55 North of Range No. 101 West of the 6<sup>th</sup> Principal Meridian, is strictly conformable to the field notes of the surveys on file in this office which have been examined and approved.  
County Surveyors Office  
Cody, Wyoming, Jan. 10 1916  
Howard F. Bell,  
County Surveyor.