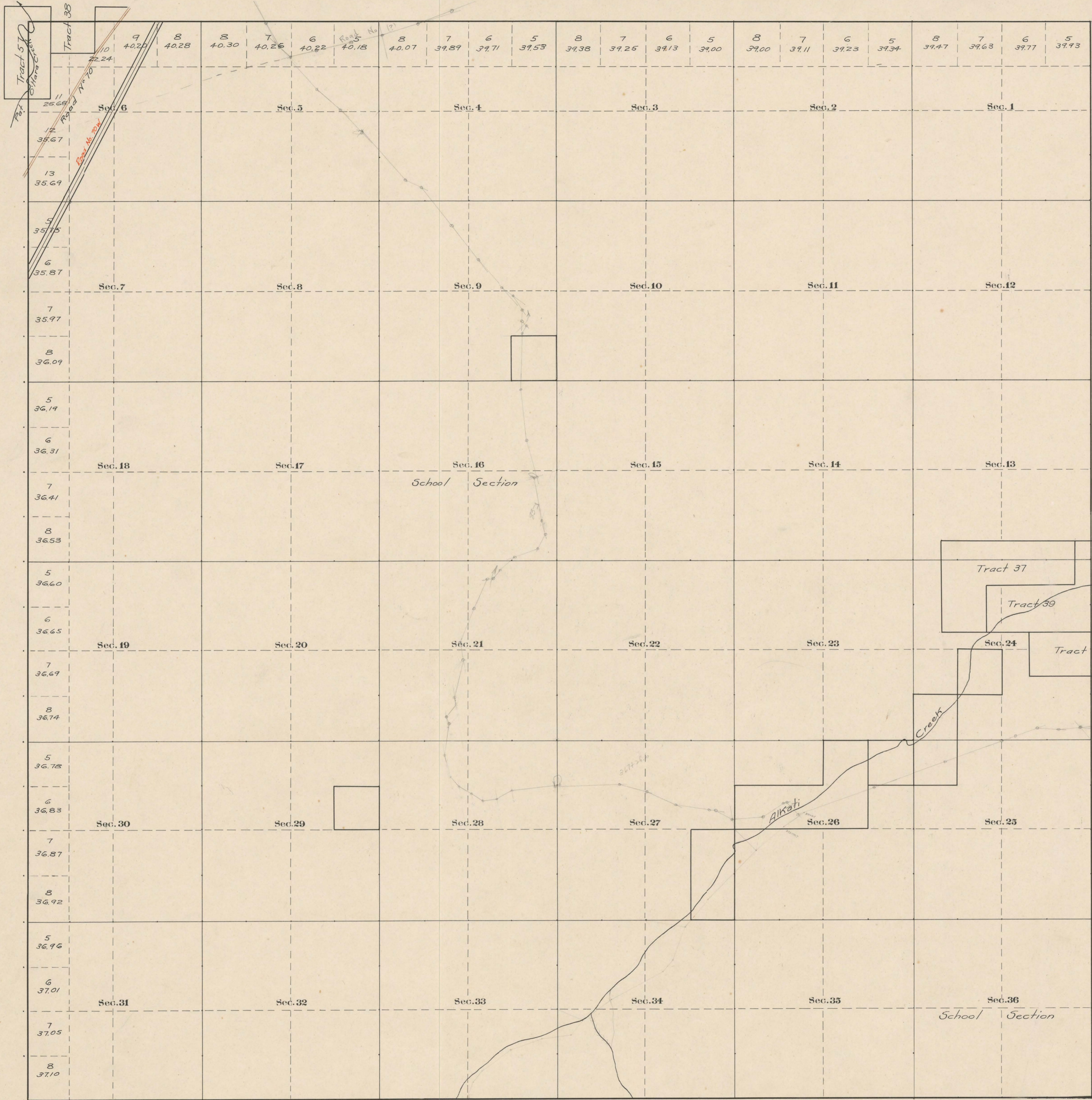


*Park*  
**County Roads in Township No 55 North Range No 102 West of the 6<sup>th</sup> Principal Meridian, Big Horn County, Wyoming**



RECORD OF ROADS						
Road No	Journal No	Page	When Petitioned	When Allowed	Original on file	Remarks
39	2	135	9/1908	—	Yes	See plat of Original Survey. <i>Not established</i>
10	1	67	9/1911	10/1911	With	Cody - Clark Fork
70	6	266	1/8/21	1/25/21	None	

Scale 20 Chains to an inch

The above Map of County roads in Township No. 55 North of Range No. 102 West of the 6<sup>th</sup> Principal Meridian, is strictly conformable to the field notes of the surveys on file in this office which have been examined and approved.

County Surveyors Office  
 Cody, Wyoming, May 9<sup>th</sup> 1914

Howard F. Bell,  
 County Surveyor.