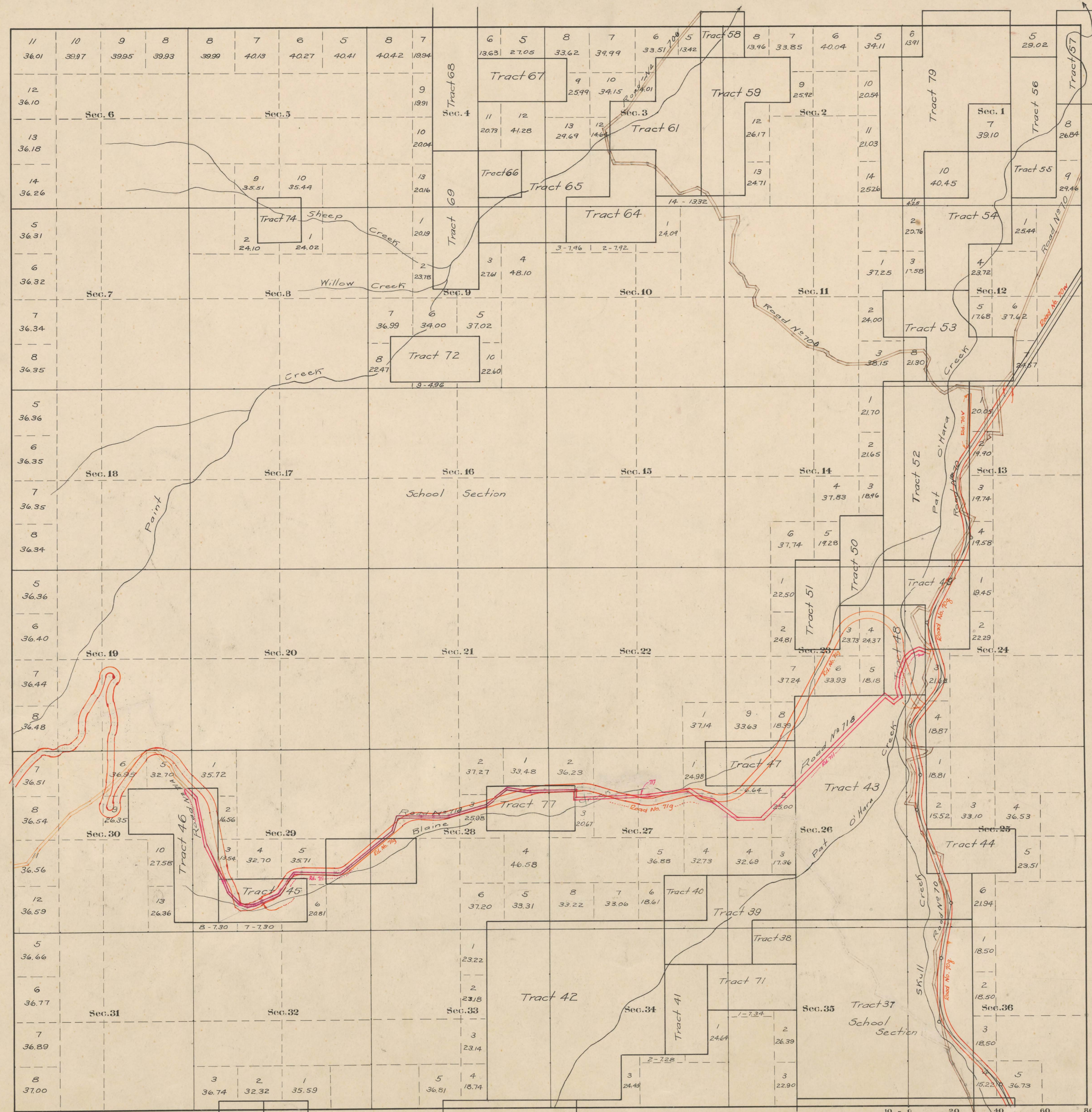


County Roads in Township No 55 North Range No 103 West of the 6th Principal Meridian, Big Horn County, Wyoming



| RECORD OF ROADS VACATION | | | | | | | | | |
|--------------------------|------------|------|-----------------|--------------|---------------------------|---------|----------------------|------------|--------|
| ROAD No | JOURNAL No | PAGE | WHEN PETITIONED | WHEN ALLOWED | ORIGINAL AREA FROM SURVEY | ON PLAT | REMARKS | JOURNAL No | DATE |
| 71 | 2 | 436 | 8/4/25 | 11/6/25 | 188 | | Widened | | |
| 70 | 1 | 67 | 3/2/11 | 4/11/11 | 2 | | County Clerk's | | |
| 70 | 1 | 173 | 8/6/52 | 8/6/52 | Yes | | Wyo. Proj. S-268 (a) | | |
| 71 | 9 | 302 | 4/4/78 | 4/4/78 | 60 | | Tract 82 | | |
| 70 | 6 | 266 | 1/9/57 | 2/6/57 | Yes | | East. Part Tract 60 | | |
| 71 | | | | | | | | 9 397 | 7/1/78 |
| | | | | | | | | 9 342 | 4/1/78 |

Scale 20 Chains to an inch
 The above Map of County roads in Township No. 55 North of Range No. 103 West of the 6th Principal Meridian, is strictly conformable to the field notes of the surveys on file in this office which have been examined and approved.
 County Surveyors Office
 CODY, Wyoming. Howard F. Bell, County Surveyor.