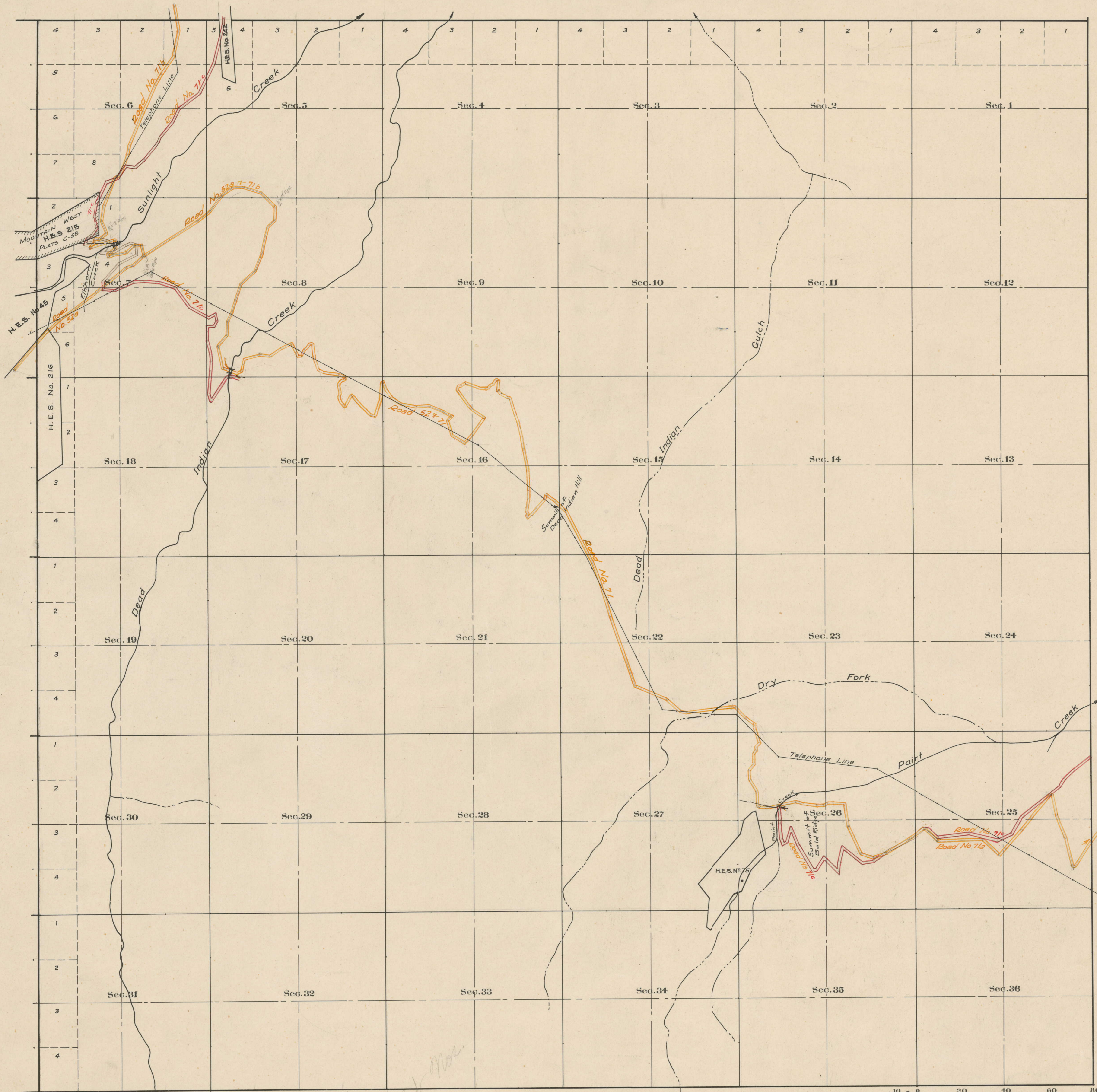


County Roads in Township No 55 North Range No 104 West of the 6<sup>th</sup> Principal Meridian, Park County, Wyoming



RECORD OF ROADS										VACATION	
ROAD NO	JOURNAL NO	PAGE	WHEN PETITIONED	WHEN ALLOWED	ORIGINAL PETITION ON FILE	PLAT ON FILE	REMARKS	JOURNAL NO	PAGE	DATE	
520	I	190	12/1/29	6/2/31	Yes	No	18-19-20-21-22-23-24-25-26-27-28-29-30-31-32-33-34-35-36-37-38-39-40-41-42-43-44-45-46-47-48-49-50-51-52-53-54-55-56-57-58-59-60-61-62-63-64-65-66-67-68-69-70-71-72-73-74-75-76-77-78-79-80-81-82-83-84-85-86-87-88-89-90-91-92-93-94-95-96-97-98-99-100				
51	I	379	7/10/2008	8/2/08			Dead Indian Hill Rd				
71	II	33	2/10/2013	12/7/2014			Gravel Hill Cr. Rd				
71a	II	426	8/1/2025	8/15/2025			Summit of Bald Knob				
71b	IX	208	8/1/2025				Delectation Gravel Hill				
71c							Vacated by Court			NEVER COMPLETED	

Pick in July 1908 and close

Scale 20 Chains to an inch  
 The above Map of County roads in Township No. 55 North of Range No. 104 West of the 6<sup>th</sup> Principal Meridian, is strictly conformable to the field notes of the surveys on file in this office which have been examined and approved.  
 County Surveyors Office  
 Cody, Wyoming

County Surveyor

Small 1/4 sec 173-168 173-168 SE 1/4 sec of 1/4 sec 173-168