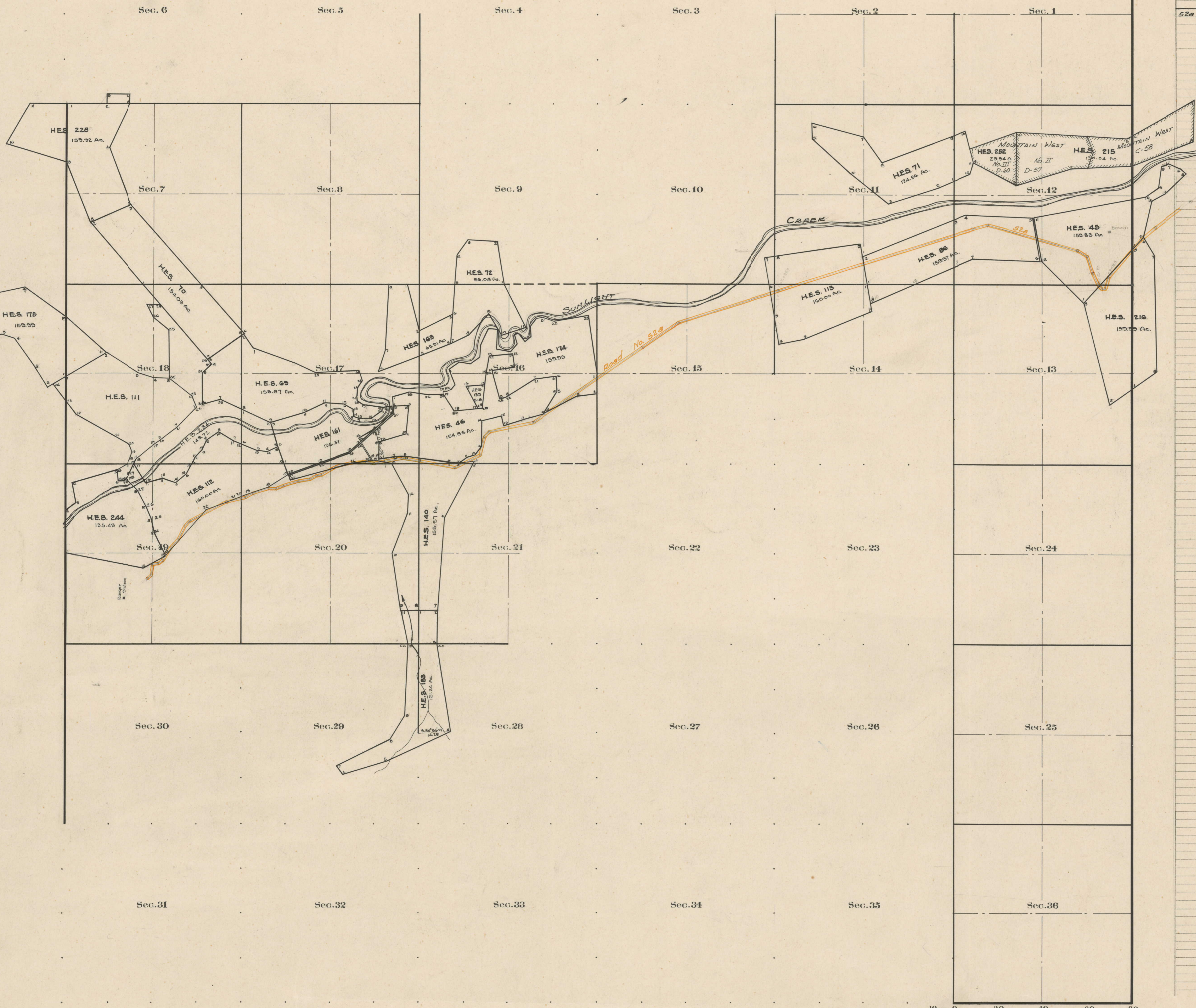


County Roads in Township N° 55 North Range N° 105 West of the 6th Principal Meridian, Park County, Wyoming



RECORD OF					ROADS	VACATION			
ROAD No	JOURNAL No	PAGE	WHEN ALLOWED	WHEN PETITIONED	ORIGINAL OPTION ON FILE	REMARKS	JOURNAL No	PAGE	DATE
528	III	100	6/2/1931	11/2/1933	Width 60'	Formal Service Ok			

Scale 20 Chains to an inch

The above Map of County roads in Township No. 55 North of Range No. 105 West of the 6th Principal Meridian, is strictly conformable to the field notes of the surveys on file in this office which have been examined and approved.
 County Surveyors Office
 Cody, Wyoming. 1941

County Surveyor.