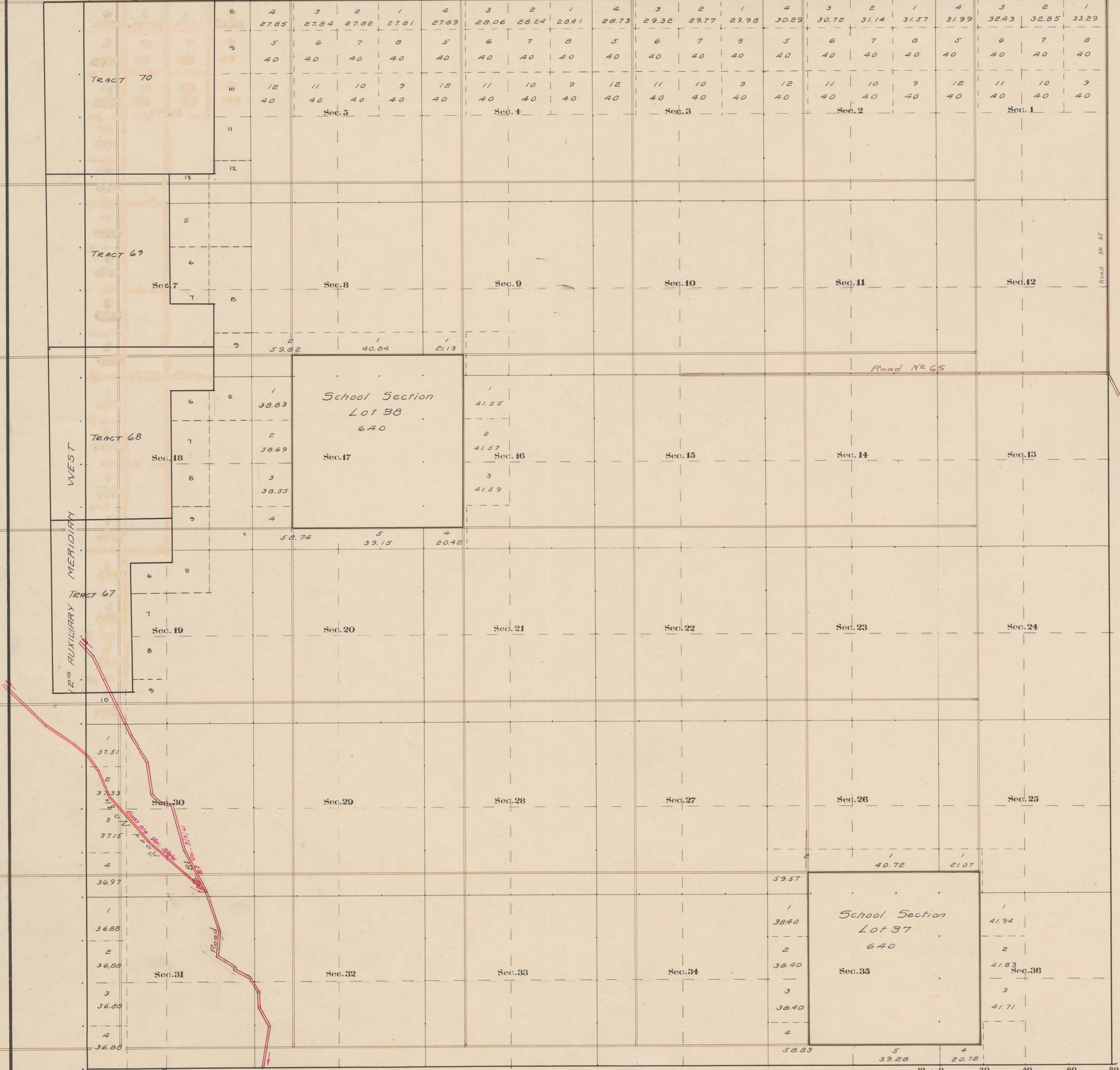


14th STANDARD PARALLEL NORTH

R100M  
R99M

County Roads in Township N<sup>o</sup> 56 North Range N<sup>o</sup> 100 West of the 6<sup>th</sup> Principal Meridian, Big Horn County, Wyoming



RECORD OF ROADS										VIAGRATION		
ROAD No.	JOURNAL No.	PAGE	WHEN	WHEN	ALLOWED	ORIGINAL FILE	FILED BY	FILE	REMARKS	JOURNAL No.	PAGE	DATE
3	1	516	Oct 6, -08	Nov 1, -08	-	-	-	-	See Sec. Lines and survey.			
65	1	786	Apr. 2-12	Dec. 31-12	Yes	With Survey						
81	2	16	8/4/1916	7/6/1916	Yes	Co. East of Road						
81a	2	232	4/7/1900	7/19/1920	Yes	Co. Sand Center				6	498	5/6/16
81b										6	498	5/6/16

Surveyed + W. & S. Tp. Lines, July-Sept, 1905.  
 Resurvey Subdivisions, Sep.-Oct., 1905.  
 Connections, Sep.-Oct., 1905.  
 Private Land Claims, Sep., 1905.  
 Retracement N. Bdry, Sep.-Oct., 1905.  
 North Boundary, Sep. 6, 1883.  
 East " " April, 1905.

The above Map of County roads in Township No. 56 North of Range No. 100 West of the 6th Principal Meridian, is strictly conformable to the field notes of the surveys on file in this office which have been examined and approved.  
 County Surveyors Office  
 Basin, Wyoming, Sept. 27, 1911.

Clyde W. Atchey  
 County Surveyor

Lot 44-46 N.  
 Long 108° 51' W.  
 Mag. Dec. 18° 10' E.