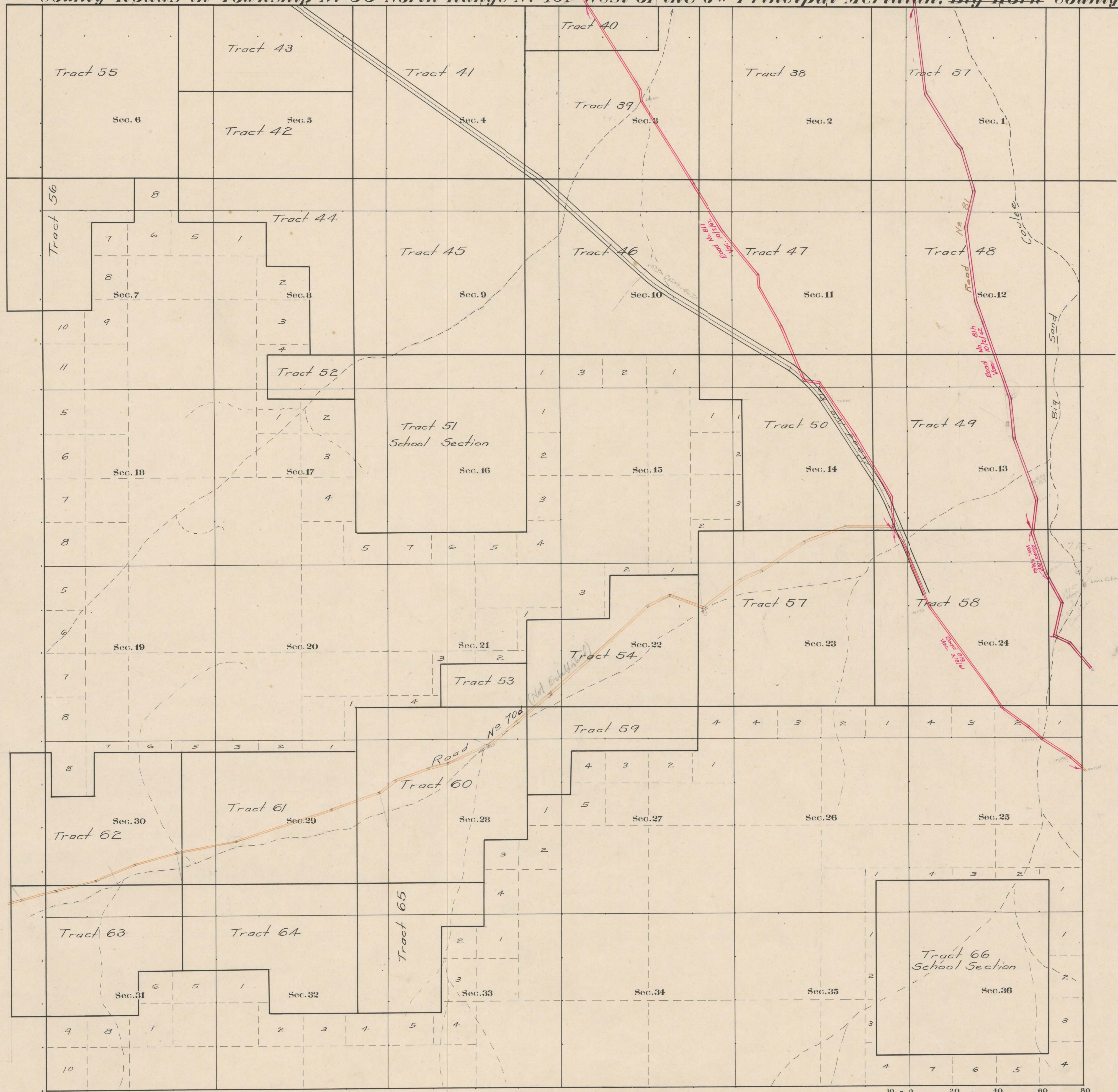


County Roads in Township No 56 North Range No 101 West of the 6th Principal Meridian, ~~Big Horn~~ ^{Park} County, Wyoming



RECORD OF ROADS						
Road No	Journal No	Page No	WHEN PETITIONED	WHEN ALLOWED	PETITION ON FILE	REMARKS
2	16	3/4/16	3/6/16	✓	60	Sand Coulee Rd.
79	0					Little Sand Coulee Road Never Established
81a	232	4/1/1920	7/9/1920	✓	60	Sand Coulee Road
81g	6	4/8	3/18/01			Vacate all in Tr. 58, Sec. 24, 25
81f	6	4/8	3/18/01			Vacate in Tr. 58, 67
81h	7	15	10/2/02			Vac. all in Tr. 49, 50, 47, 46, 39, 40
81i	7	15	10/2/02			

Scale 20 Chains to an inch

The above Map of County roads in Township No. 56 North of Range No. 101 West of the 6th Principal Meridian, is strictly conformable to the field notes of the surveys on file in this office which have been examined and approved.
 County Surveyors Office
 CODY, Wyoming. 191

Howard F. Bell
 County Surveyor