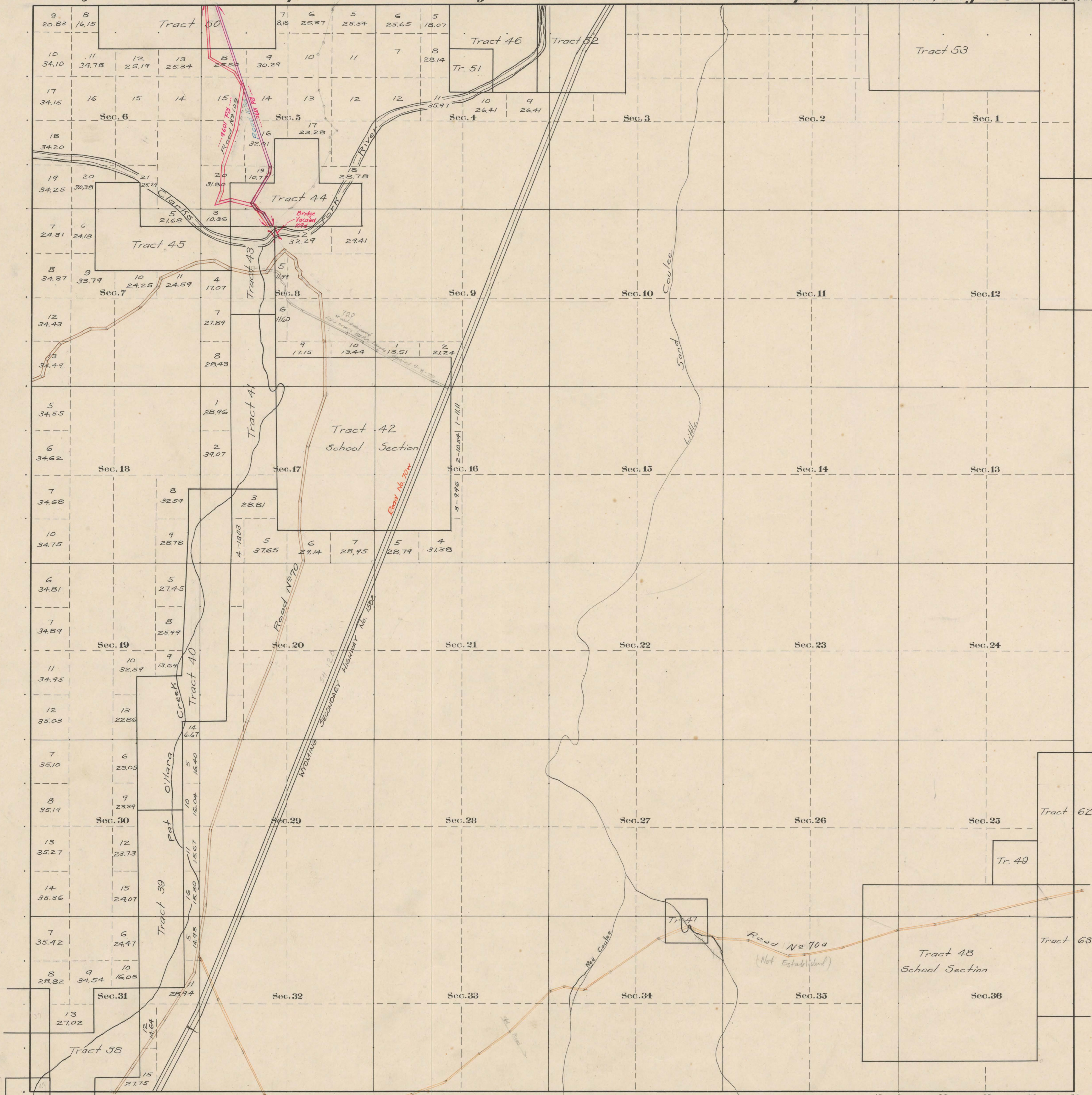


County Roads in Township N<sup>o</sup> 56 North Range N<sup>o</sup> 102 West of the 6<sup>th</sup> Principal Meridian, ~~Big Horn~~ <sup>Park</sup> County, Wyoming



RECORD OF ROADS						
Road No.	Journal No.	DATE	WHEN PETITIONED	WHEN ALLOWED	ORIGINAL PETITION ON FILE	REMARKS
34	2	135	3/3/1908		Yes	Cody - Clark's Fork - Sec. Orig. Sur. Plat. Never Established
41	2	295	7/1/1909	7/1/1909	Yes	" " " " " "
70	1	67	5/1/1911	8/1/1912	Yes	Cody - Clark's Fork
109	2	350	5/4/1904	5/7/1904	Yes	Clark - Clark's Fork River Bridge
704						Never Established
1070	2	520	3/4/1906	7/6/1906	Yes	Will Con. Sec. 27 (56-102) south to River Br.
1094	9	125	10/1/05	4/1/06		Road 109 vacated
1095	9	125	10/1/05	4/1/06		Road 109a vacated
706	6	266	1/8/08	3/6/08	Yes	
1099	6	487	1/4/09	1/4/09	Yes	Clark's Fork Bridge Vacated

Scale 20 Chains to an inch

The above Map of County roads in Township N<sup>o</sup> 56 North of Range N<sup>o</sup> 102 West of the 6<sup>th</sup> Principal Meridian, is strictly conformable to the field notes of the surveys on file in this office which have been examined and approved.  
 County Surveyors Office  
 CODY ~~Wyoming~~ Wyoming, May 8<sup>th</sup> 1914

Howard F. Bell,  
 County Surveyor.